

PENNOYER  NEWMAN  
DISTINCTIVE GARDEN POTS CAST FROM ESTATE ORIGINALS



**EGG-SHAPED GARDEN STONE**  
 CAST FROM ORIGINAL VOLCANIC STONES THAT WERE CHISELED INTO EGG FORMS, THESE SHAPES MAKE WONDERFUL GARDEN ORNAMENTS AND CAN FUNCTION AS DRIVEWAY MARKERS AND ALSO CONVERT INTO FOUNTAINS.  
 ITEM# 501      22”H X 16”W



**ALPINE TROUGH AND ALPINE SQUARE PLANTER**  
 CAST TO COMPLETE OUR ASSORTMENT OF SHAPES WITHIN OUR POPULAR ALPINE PLANTER COLLECTION, THESE ALPINE PLANTERS WILL EASILY BECOME CENTRAL TO THE DESIGN AND STYLE OF YOUR GARDEN.  
 ITEM# 575      TROUGH      24”H X 48”W X 18”D  
 ITEM# 613      SQUARE      24”H X 24”W X 24”D



**JAPANESE RAIN BARREL**  
 CAST FROM AN EXTREMELY HEAVY, BEAUTIFULLY HAND-CARVED STONE ORIGINAL, THIS BARREL IS LARGE ENOUGH TO ACCOMMODATE SMALL TO MID-SIZE TREES.  
 ITEM# 502      24”H X 31”W





**HORTULUS FARM XL VESSEL**  
THIS VESSEL WAS SOURCED THROUGH THE FOUNDERS OF HORTULUS FARM IN WRIGHTSTOWN [BUCK'S COUNTY], PA. ENJOY THIS HORTULUS FARM XL EGG CUP VESSEL IN YOUR GARDEN.  
ITEM# 583XL 23.5"H X 32"W



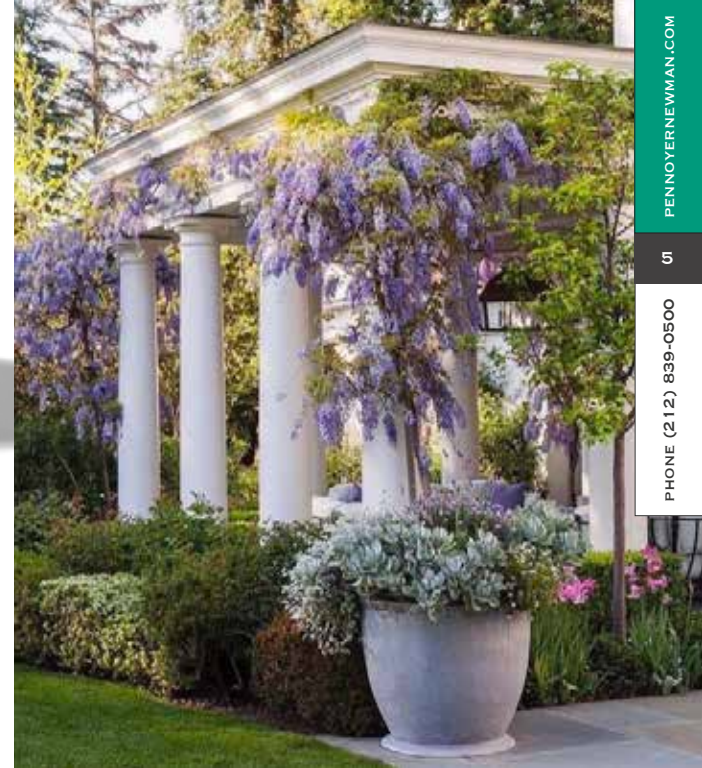
**EGG CUP PLANTER**  
USE AS A STAND-ALONE PLANTER OR PERSONALIZE WITH AN ICON.  
ITEM# 418S 18"H X 17"W [12" BASE]  
ITEM# 418M 24"H X 22"W [16" BASE]  
ITEM# 418L 30"H X 28"W [20" BASE]  
ITEM# 418XL 32"H X 34"W [24" BASE] **NEW**  
ITEM# 418XXL 40"H X 44"W [34" BASE] **NEW**



**CONICAL STRAPPED EGG CUP PLANTER**  
THIS SIMPLE FORM REFLECTS THE VERY BEST IN GARDEN DESIGN.  
ITEM# 556S 17"H X 15"W [12" BASE]  
ITEM# 556M 22"H X 20"W [16" BASE]  
ITEM# 556L 28"H X 26"W [20" BASE]



**MODERN EGG CUP PLANTER**  
A MODERN TWIST ON AN OLD CLASSIC.  
ITEM# 554S 17"H X 15"W [12" BASE]  
ITEM# 554M 22"H X 20"W [16" BASE]  
ITEM# 554L 28"H X 26"W [20" BASE]

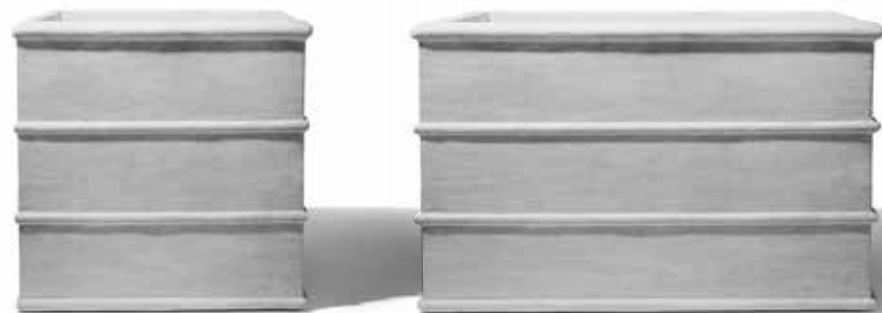






**RECTANGULAR SMOOTH-EDGED WINDOW BOX**  
THIS SMOOTH-EDGED WINDOW BOX CORRESPONDS WITH OUR FLORENTINE COLLECTION AND OUR CUSTOM RECTANGULAR SMOOTH-EDGED PLANTER [PAGES 10-11].

ITEM# 599L 13"H X 36"W X 14"D **NEW**  
ITEM# 599 12"H X 41"W X 13.75"D



**CONICAL STRAPPED SQUARE & RECTANGULAR PLANTERS**  
TAKING AN OLD WORLD STYLE INTO A NEW WORLD FORM IS EXACTLY WHAT WE'VE CREATED FROM OUR EXCLUSIVE CONICAL STRAPPED POTS, AS SHOWN AT RIGHT. THIS EXTENDED COLLECTION OF PLANTERS MAKES IT AN EVEN MORE IRRESISTIBLE STYLE IN ANY GARDEN DESIGN.

ITEM# 671SQ SQUARE 25"H X 24"W X 24"D  
ITEM# 671RS RECTANGULAR, SMALL 25"H X 36"W X 16"D  
ITEM# 671RL RECTANGULAR, LARGE 25"H X 48"W X 18"D



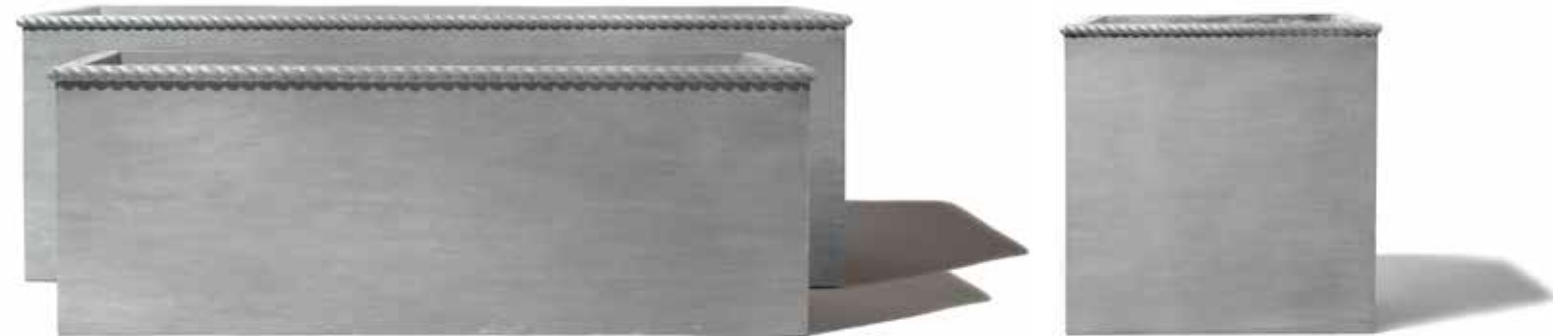
**CONICAL STRAPPED POTS**  
THIS POT WAS CAST FROM AN ENGLISH LEAD ORIGINAL. THE STRUCTURED FORM MAKES IT A WONDERFUL PLANTER TO REPEAT IN A STRAIGHT LINE ALONG A GARDEN WALKWAY, PLACE AT ENTRANCES, OR USE AS A STAND-ALONE BEAUTY.

ITEM# 404S SMALL 20"H X 21"W [15" AT BASE]  
ITEM# 404L LARGE 25"H X 27"W [19" AT BASE]  
ITEM# 404T TALL 32"H X 23"W [15" AT BASE]

AS FEATURED IN  
**VANITY FAIR**



## THE ROPE EDGED COLLECTION



## ROPE EDGED RECTANGULAR &amp; SQUARE PLANTERS

WHY "KNOT" TIE IT ALL TOGETHER WITH OUR EXTENDED COLLECTION OF ROPE EDGED PLANTERS. THESE PLANTERS WERE INSPIRED FROM THE MOST SIMPLISTIC AESTHETIC THAT ORIGINATED FROM THE DECORATIVE MOLDING OF OUR ITALIAN FLORENTINE COLLECTION. CUSTOM SIZES ALSO AVAILABLE UPON REQUEST.

ITEM# 677RS	RECTANGULAR SMALL	18.25"H X 48.5"W X 18"D
ITEM# 677RL	RECTANGULAR LARGE	24"H X 72"W X 24"D
ITEM# 677SQXS	SQUARE X-SMALL	16"H X 16"W X 16"D
ITEM# 677SQS	SQUARE SMALL	20"H X 20"W X 20"D
ITEM# 677SQM	SQUARE MEDIUM	24"H X 24"W X 24"D
ITEM# 677SQ	SQUARE LARGE	30"H X 30"W X 30"D
ITEM# 677SQL	SQUARE X-LARGE	36"H X 36"W X 36"D <b>NEW</b>



## ROPE EDGED CYLINDER SHAPED PLANTERS

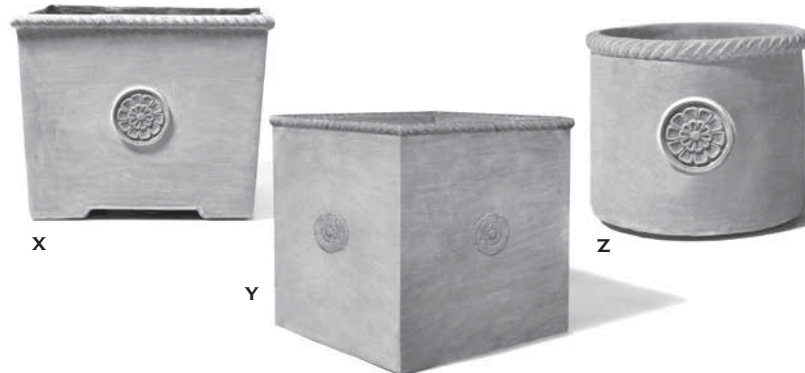
THE DECORATIVE ROPE EDGE OF THESE PLANTERS WAS SO POPULAR WE'VE ADDED NEW SHAPES AND SIZES TO COINCIDE WITH THE COLLECTION.

ITEM# 598XS	CYLINDER X-SMALL	12"H X 11"W
ITEM# 598S	CYLINDER SMALL	16"H X 18.5"W
ITEM# 598L	CYLINDER LARGE	16"H X 21.5"W
ITEM# 598XL	CYLINDER X-LARGE	22"H X 24"W <b>NEW</b>
ITEM# 598XXL	CYLINDER XX-LARGE	30"H X 30"W <b>NEW</b>
ITEM# 598XXXL	CYLINDER XXX-LARGE	36"H X 36"W <b>NEW</b>
ITEM# 598T	CYLINDER TALL	32"H X 23"W





## THE FLORENTINE COLLECTION



## FLORENTINE PLANTERS

ROPE EDGED PLANTERS WITH FLORENTINE EMBLEMS COME IN THREE STYLES: STYLE X TAPERS OUT FROM BASE WITH BUILT-IN RISERS; STYLE Z IS AN ABSOLUTE SQUARE TO ACCOMMODATE ROOT BALL GROWTH; STYLE C IS OUR CLASSIC MAYNARD ROUND. RISER OPTIONS AVAILABLE FOR STYLE B. ASK ABOUT CUSTOM SIZES.

X	ITEM# 009	SMALL	17"H X 21"W X 21"D
X	ITEM# 010	MEDIUM	25"H X 28"W X 28"D
Y	ITEM# 437	LARGE	30"H X 30"W X 30"D
Y	ITEM# 011	X-LARGE	36"H X 36"W X 36"D
Z	ITEM# 012	ROUND	12"H X 15"W

## FLORENTINE RECTANGULAR SMOOTH EDGED PLANTER

OUR EXPANDED RANGE OF FLORENTINE SIZES INCLUDES RECTANGULAR AND SQUARE SIZES THAT MATCH THE STYLING AND MOLD PATTERN OF THE IMAGE AT RIGHT. WITH EACH ORDER, SPECIFY WITH OR WITHOUT ICONS. RISERS CAN BE ORDERED FOR THE NEW SIZES AS WELL.

RECTANGULAR SIZES [STYLE SHOWN AT RIGHT]:	ITEM# 903	24"H X 48"W X 24"D	<b>NEW</b>		
ITEM# 013AA	13"H X 30"W X 10"D	<b>NEW</b>	ITEM# 904	24"H X 72"W X 18"D	<b>NEW</b>
ITEM# 013A	18"H X 36"W X 12"D	<b>NEW</b>			
ITEM# 013	20"H X 48"W X 12"D		SQUARE SIZES [STYLE SHOWN AT RIGHT]:		
ITEM# 013B	20"H X 48"W X 18"D		ITEM# 013SQS	18"H X 18"W X 18"D	<b>NEW</b>
ITEM# 013D	24"H X 48"W X 12"D	<b>NEW</b>	ITEM# 013SQM	24"H X 24"W X 24"D	<b>NEW</b>



FLORENTINE RECTANGULAR SMOOTH EDGED PLANTER  
AVAILABLE WITH OR WITHOUT ICON AS SHOWN ABOVE.



▼ FIVE FLOWER MEDALLION PLANTER WITH PEDESTAL BASE  
THIS ROUND PEDESTAL HAS BEEN RECAST AS AN OPTIONAL BASE TO THE FIVE FLOWER MEDALLION PLANTER.

ITEM# 055 FIVE FLOWER MEDALLION PLANTER 17.5”H X 26.5”W  
ITEM# 627 FIVE FLOWER MEDALLION PEDESTAL 5.5”H X 18”W



**FRENCH FLORENTINE ROUND**  
THE OLD FRENCH TERRA COTTA CLAY POT ORIGINAL WAS CRACKED IN HALF, AND REPAIRED AND CAST TO SAVE ITS SIMPLE AND ELEGANT DESIGN.  
ITEM# 476 12”H X 13”W



**ICON PLANTERS**  
CHOOSE FROM PERRIERA ROUND, FLORENTINE, GOTHIC, AS WELL AS CUSTOM LETTER ICON STYLES UPON REQUEST. SAME ICON ON ALL FOUR SIDES, 22.5”H X 19.25”W X 19.5”D.  
ITEM# 408 CHOOSE ICON FROM ABOVE  
ITEM# 408P PLAIN / NO ICON **NEW**





**GREENWICH PLANTERS**

THESE PLANTERS TAKE ROOFTOP GARDENING TO THE NEXT LEVEL. THIS SOPHISTICATED DESIGN BY AARON MCINTIRE, OF ARBOR & FOLLY, IS OFFERED IN THREE SIZES AND CAN ELEVATE PLANTING HEIGHTS ACROSS TERRACES AND DECKS IN URBAN AND COUNTRY LANDSCAPES.

ITEM# 728	SQUARE, SMALL	34" H X 24" W X 24" D
ITEM# 729	SQUARE, LARGE	34" H X 30" W X 30" D
ITEM# 730	RECTANGULAR	29.5" H X 56" W X 24" D



**BASIC WINDOW BOX**

THIS SIMPLE YET ELEGANT WINDOW BOX SHOWCASES THE SKILLS OF ANY CONTAINER GARDENER. OPTIONAL MONOGRAMS OR ICONS, AS SHOWN BELOW AND AT RIGHT, CUSTOMIZE PLANTERS FOR YOUR HOME AND GARDEN. PRICING AVAILABLE UPON REQUEST.

ITEM# 053S	SMALL	8" H X 24" W X 9" D
ITEM# 053M	MEDIUM	8" H X 36" W X 9" D
ITEM# 053L	LARGE	8" H X 48" W X 9" D





## THE PANELED PLANTER COLLECTION



OUR POPULAR PANELED PLANTER SERIES HAS BEEN EXPANDED TO INCLUDE THE MOST USEFUL SIZES FOR ANY GARDEN.

A	ITEM# 589S	SMALL ROUND	18"H X 19"W
	ITEM# 589M	MEDIUM ROUND	24"H X 25"W
	ITEM# 589L	LARGE ROUND	30"H X 31"W
B	ITEM# 452	PANELED WINDOW BOX	10"H X 36"W X 12"D
C	ITEM# 032	PANELED SQUARE	22.25"H X 19.5"W X 19.5"D
	ITEM# 041	PANELED SQUARE, LARGE	29"H X 25.75"W X 25.75"D
D	ITEM# 456	PANELED RECTANGULAR	24"H X 48"W X 16"D

## THE WEST SUSSEX PLANTER COLLECTION



INFLUENCED BY THE GROUNDS OF ARUNDEL CASTLE AND GARDENS IN WEST SUSSEX, ENGLAND, THE CIRCULAR MOTIF REFLECTS THE GOTHIC REVIVAL STYLE CONSIDERED TO BE ONE OF THE GREAT WORKS OF VICTORIAN ENGLAND.

ITEM# 800S	SMALL ROUND	18"H X 19"W
ITEM# 800M	MEDIUM ROUND	24"H X 25"W
ITEM# 801	PANELED RECTANGULAR	24"H X 48"W X 16"D
ITEM# 802	SQUARE	22.25"H X 19.5"W X 19.5"D



#### MODERN RECTANGULAR PLANTER

EXTEND THE LINES OF YOUR GARDEN BY COMBINING OUR MODERN RECTANGULAR PLANTER WITH THE MODERN CORNER PLANTER [PAGE 22] TO CREATE SOPHISTICATED RAISED BORDERS FOR YOUR ROOFTOP, TERRACE OR GARDEN. AVAILABLE IN CUSTOM SIZES. [SHOWN AT LEFT IN DARK GREY; SHOWN ABOVE IN LEAD GREY.]

ITEM# 447XS	24"H X 24"W X 12"D	<b>NEW</b>
ITEM# 447	24"H X 48"W X 14"D	
ITEM# 447XL	24"H X 48"W X 18"D	<b>NEW</b>
ITEM# 447XXL	24"H X 72"W X 18"D	<b>NEW</b>
ITEM# 448	24"H X 72"W X 24"D	<b>NEW</b>



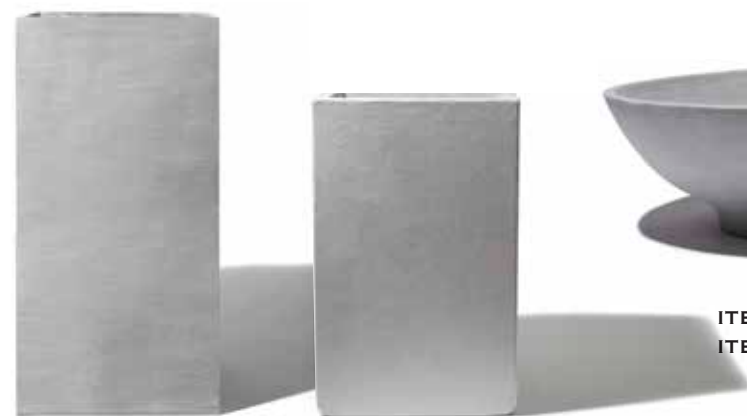
#### HALF GRAPEFRUIT SHAPED BOWL

ADD SYMMETRY AND SOPHISTICATED SIMPLICITY TO THE FOCAL POINTS OF ANY OUTDOOR SPACE. [SHOWN AT RIGHT IN DARK GREY; SHOWN ABOVE IN LEAD GREY.]

ITEM# 109S	SMALL	11.5"H X 25"W
ITEM# 109M	MEDIUM	14"H X 30"W
ITEM# 109	LARGE	17"H X 34.5"W







**TALL MODERN SQUARE PLANTERS  
WITH SQUARE BASE OR CURVE BASE**

CHOOSE FROM THE CLEAN LINES OF THE SQUARE BASE TO CREATE FORMAL LINES OR THE CURVE CONTOURED BASE TO CREATE INFORMAL LINES IN YOUR GARDEN SPACE.

ITEM# 655SS	SMALL - SQUARE BASE	27"H X 17"W X 17"D
ITEM# 655S	SMALL - SQUARE BASE	32"H X 20"W X 20"D <b>NEW</b>
ITEM# 655LS	LARGE - SQUARE BASE	36"H X 22"W X 22"D
ITEM# 655	TALL - SQUARE BASE	48"H X 24"W X 24"D
ITEM# 654S	SMALL - CURVE BASE	27"H X 17"W X 17"D
ITEM# 654L	LARGE - CURVE BASE	36"H X 22"W X 22"D



**MODERN BOWL**

ITEM# 450	SMALL MODERN BOWL	8.5"H X 21"W
ITEM# 450L	LARGE MODERN BOWL	9.5"H X 29"W



**MODERN WINDOW BOX**

ITEM# 451S	SMALL	8"H X 24"W X 9"D
ITEM# 451M	MEDIUM	8"H X 36"W X 9"D
ITEM# 451L	LARGE	8"H X 48"W X 9"D



**MODERN SQUARE PLANTER**

FROM OUR MODERN COLLECTION, THIS CLEAN AND CRISP SQUARE PLANTER IS ALSO AVAILABLE IN CUSTOM SIZES.

ITEM# 500S	18"H X 18"W X 18"D	<b>NEW</b>
ITEM# 500	20"H X 20"W X 20"D	
ITEM# 210	24"H X 24"W X 24"D	
ITEM# 211	28"H X 28"W X 28"D	
ITEM# 212	30"H X 30"W X 30"D	
ITEM# 592	36"H X 36"W X 36"D	



### KNOT GARDEN PLANTERS

KNOT GARDENS, SIMILAR TO THE ONE SEEN BELOW RIGHT, WERE FIRST ESTABLISHED IN ENGLAND IN THE REIGN OF QUEEN ELIZABETH I, AND WERE THE INSPIRATION TO OUR KNOT GARDEN PLANTER SERIES. THESE PLANTERS BRING THE IN-GROUND VERSION ABOVE GROUND.

A ITEM# 677A CORNER 9"H X 36"W [LONG AXIS] X 17.75"W [SHORT AXIS] X 18" [CORNER RADIUS]

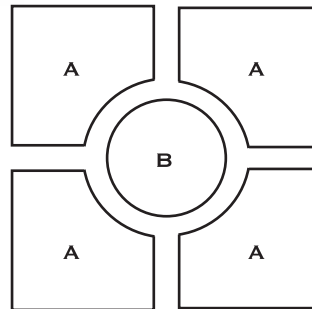
B ITEM# 677B ROUND 9"H X 36"W



**MODERN CORNER PLANTER**

COMBINE WITH OUR MODERN RECTANGULAR PLANTERS [PAGE 18] TO CREATE A SOPHISTICATED RAISED BED BORDER FOR YOUR ROOFTOP, TERRACE OR GARDEN SPACE.

ITEM# 454 CORNER 24"H X 48"L X 48"L X 14"D

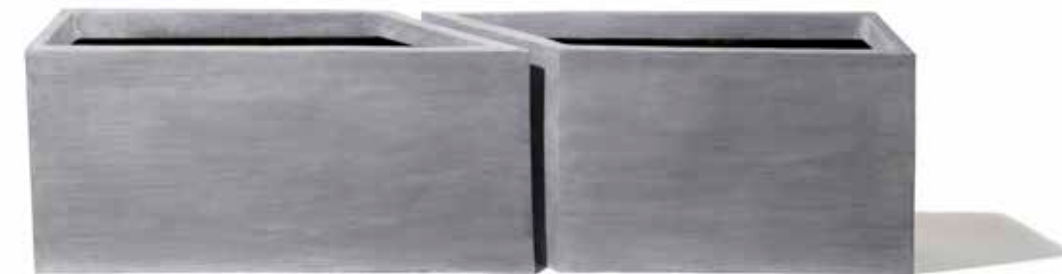
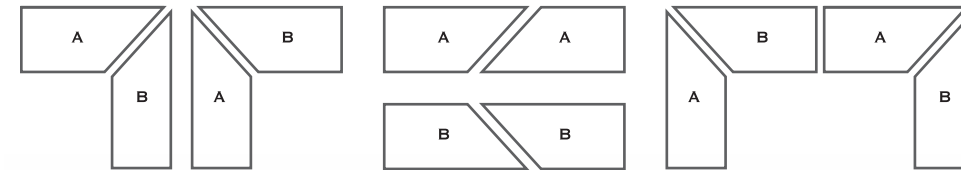


**THE PARTERRE TOWER COLLECTION**  
USE THESE RAISED BED PLANTERS AT GROUND LEVEL FOR VEGETABLE OR PERENNIAL GARDEN BEDS, OR CREATE A STACKED TOWER TO BRING HEIGHT TO THE CENTRAL AREA OF YOUR GARDEN. UPON REQUEST, PLANTER TOWER CAN BE CUSTOMIZED AND CONVERTED INTO A WATER FEATURE.

ITEM# 652S 9"H X 24"W X 24"D

ITEM# 652M 9"H X 36"W X 36"D

ITEM# 652L 9"H X 48"W X 48"D



**MODERN PLANTERS IN TRAPEZOIDAL SHAPES**

ANY ROOFTOP SPACE CAN BE MADE MORE USABLE WITH THE ADVANTAGE OF THESE TRAPEZOIDAL SHAPES. STEP AND REPEAT THESE PATTERNS TO CREATE CORNERS, BORDERS, WALKWAYS AND MORE. [TWO TRAPEZOIDAL B SHAPES SHOWN ABOVE.]

ITEM# 555A TRAPEZOIDAL A SHAPE 24"H X 48"W [BACK] X 34"W [FRONT] X 14"D

ITEM# 555B TRAPEZOIDAL B SHAPE 24"H X 34"W [BACK] X 48"W [FRONT] X 14"D





#### HANDKERCHIEF PLANTER SERIES

THESE INCREDIBLE PLANTER FORMS HAVE BEEN RESTORED AND RECAST IN RESIN TO WITHSTAND USE IN WINTER CLIMATES. AVAILABLE IN THREE SIZES.

ITEM# 647S SMALL 10"H X 25"W

ITEM# 647M MEDIUM 11"H X 28"W

ITEM# 647L LARGE 16"H X 44"W



#### INDUSTRIAL PLANTER

FOR TRUE CURATORS OF MODERN STYLE, THIS TIMELESS 20<sup>TH</sup> CENTURY AMERICAN INDUSTRIAL FORM WAS MADE OF SOLID STEEL AND CAST TO CREATE THIS SMARTLY STYLED PLANTER. ITEM# 651 27.5"H X 24"W [AT TOP] / 30"W [AT BASE]





AS SEEN IN NEW YORK SPACES MAGAZINE

**MODERN SHAPED BOWLS**

THESE BOWLS WERE RECREATED FROM ENGLISH CAST STONE VESSELS AND MAKE WONDERFUL GROUPINGS ON TERRACES, PATIOS AND GARDEN TABLETOPS.

ITEM# 472S	SMALL	9.5"H X 18"W	[12" BASE]
ITEM# 472M	MEDIUM	11"H X 21"W	[13.5" BASE]
ITEM# 472L	LARGE	12"H X 24"W	[16" BASE]

**TALL ZINC-CAST SQUARE**

WHEN CLEAN STYLISTIC FORMS ARE NEEDED MOST, THIS PLANTER, CAST FROM A TRADITIONAL ZINC ORIGINAL, IS THE ANSWER. SYMMETRICAL AND SIMPLE – THE TALL SQUARE WILL PARTNER WELL WITH OUR LION PLANTER [PAGE 50].  
ITEM# 588 26"H X 25.5"W X 25.5"D [20" SQUARE AT BASE]

**TALL ZINC-CAST RECTANGLE**

FOR A HARD-TO-FIT RECTANGULAR SPACE, THIS REPLICA OF A ZINC RECTANGLE PLANTER, LIKE THE TALL ZINC-CAST SQUARE, ALSO SITS WELL WITH THE DESIGN OF OUR LION PLANTER [PAGE 50]. SIMPLE IS INDEED ALWAYS ELEGANT.  
ITEM# 588RT 26"H X 37.5"W X 18"D [BASE 12"D]





### ROLLED RIM VASES

THIS PLANTER SERIES HAS A SUBTLY CURVED RIM TOP WITH A SIMPLE AND CLEAN LINED SILHOUETTE THAT WILL HOLD COURT IN BOTH MODERN AND TRADITIONAL GARDEN SETTINGS.

ITEM# 688S	SMALL	16"H X 16.25"W [9.5"W ROUND BASE]
ITEM# 688M	MEDIUM	20"H X 20"W [14"W ROUND BASE]
ITEM# 688T	TALL	32"H X 23"W [15"W ROUND BASE]

### THE INDUSTRIAL PLANTER COLLECTION



A	ITEM# 680	INDUSTRIAL BOWL	22"H X 38.5"W [23"W AT BASE]
B	ITEM# 653	PRISM PLANTER	18"H X 20"W [SURFACE PANELS 10"]
C	ITEM# 679	INDUSTRIAL URN	25.5"H X 29"W [13.5"W AT BASE; PLANTING DEPTH: 25"]
D	ITEM# 597	SQUARE CONTEMPORARY PLANTER WITH INSET HANDLES	17.25"H X 16"W X 16"D



## CLASSIC PLANTER COLLECTION

THE SIMPLE RECESSED MOLDING MADE OUR ORIGINAL SQUARE PLANTERS FAVORITES AMONGST GARDENERS. AS A RESULT, WE NOW OFFER ROUND AND RECTANGULAR SIZES. THIS PLANTER SERIES IS PERFECT FOR ALL TYPES OF GARDENS. ASK ABOUT RISER OPTIONS.

ITEM# 595WB	WINDOW BOX	10" H X 28"W X 10"D	<b>NEW</b>
ITEM# 595	RECTANGULAR	18" H X 48"W X 18"D	
ITEM# 458XXL	RECTANGULAR	24" H X 72"W X 18"D	<b>NEW</b>
ITEM# 458XXXL	RECTANGULAR	30" H X 60"W X 16"D	<b>NEW</b>
ITEM# 458S	SQUARE, SMALL	18"H X 18"W X 18"D	[RISERS INCLUDED ON THIS SIZE ONLY]
ITEM# 458M	SQUARE, MEDIUM	24"H X 24"W X 24"D	
ITEM# 458XL	SQUARE, LARGE	30"H X 30"W X 30"D	<b>NEW</b>
ITEM# 593	ROUND	18"H X 18.5"W	



## CONTEMPORARY PLANTERS WITH INSET HANDLES

THE ORIGINAL PLANTERS, KNOWN AS THE WATTS POTS, WERE CRACKED FROM AGE, REPAIRED AND THEN RECAST.

ITEM# 409XXXS	XXX-SMALL	8"H X 13"W [9" AT BASE]
ITEM# 409XXS	XX-SMALL	12"H X 14"W [9" AT BASE]
ITEM# 409XS	X-SMALL	16"H X 19"W [12" AT BASE]
ITEM# 409S	SMALL	18"H X 24"W [15" AT BASE]
ITEM# 409M	MEDIUM	24"H X 28"W [18" AT BASE]
ITEM# 409L	LARGE	29"H X 34"W [22" AT BASE]







LERIO, ROLL RIM, AND BASIC SQUARE PLANTERS

**LERIO PLANTER**

ITEM# 051S	20"H X 22"W
ITEM# 051M	21"H X 24"W
ITEM# 051L	26"H X 27"W
ITEM# 051XL	36"H X 42"W

**ROLL RIM SQUAT PLANTER**

ITEM# 301	8"H X 20"W
-----------	------------

**BASIC SQUARE PLANTER**

ITEM# 052S	20"H X 20"W X 20"D
ITEM# 052M	24"H X 25"W X 25"D



MODERN STRAIGHT CYLINDER PLANTER  
STRAIGHT WALLS FOR THE MOST MODERN  
PRESENTATION.

ITEM# 596XXS	12"H X 12"W	<b>NEW</b>
ITEM# 596XS	14"H X 14"W	<b>NEW</b>
ITEM# 596	18"H X 18.5"W	
ITEM# 596TS	36"H X 21"W	<b>NEW</b>
ITEM# 596TM	36"H X 24"W	<b>NEW</b>



CYLINDERS AND SQUARE VASES

THESE MINIMALIST GARDEN PLANTERS ADD A TOUCH OF CLEAN-CUT  
FORMALITY WHEREVER THEY ARE PLACED.

ITEM# 412	TALL	32"H X 21"W	[13" AT BASE]
ITEM# 412S	SHORT	15"H X 21"W	[14" AT BASE]
ITEM# 411S	SMALL SQUARE	28"H X 20"W	[16" AT BASE]
ITEM# 411M	MEDIUM SQUARE	32"H X 24"W	[20" AT BASE]
ITEM# 411L	LARGE SQUARE	39.5"H X 18"W	[13" AT BASE]

## THE GRECIAN &amp; ANTIGUA PLANTER COLLECTION



## GRECIAN PLANTERS

A	ITEM# 620S	SMALL	13.5"H X 17.5"W
B	ITEM# 620M	MEDIUM	14"H X 17.5"W
C	ITEM# 620L	LARGE	28"H X 26"W
D	ITEM# 620XL	X LARGE	32"H X 30.5"W

ITEM# 617S

ITEM# 617L

ITEM# 617XL

ITEM# 618L

ITEM# 618XL

## ANTIGUA PLANTERS

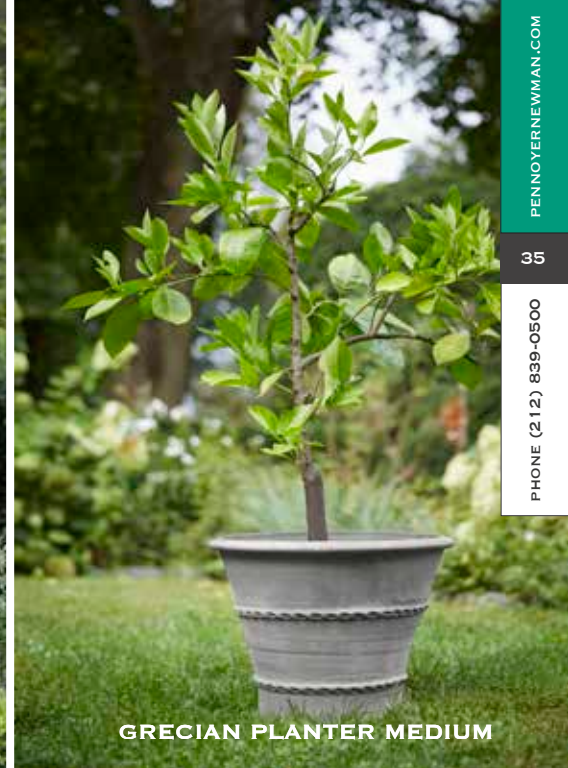
PLANTER, SMALL	13"H X 14"W
PLANTER, LARGE	13"H X 19"W
PLANTER, X-LARGE	18.5"H X 23"W
SAUCER, LARGE	3"H X 15"W
SAUCER, X-LARGE	3"H X 19"W



GRECIAN PLANTER EXTRA-LARGE



GRECIAN PLANTER LARGE



GRECIAN PLANTER MEDIUM



## THE RIVETED PLANTER COLLECTION



## RIVETED RECTANGLE

A BEAUTIFUL AND HISTORICALLY SIGNIFICANT PLANTER. CUSTOM SIZES ALSO AVAILABLE.

ITEM# 566 18"H X 25"W X 18"D



## RIVETED ROUND

A FORM THAT RESONATES WITH THE GLOBAL GARDENING SCENE.

ITEM# 564 13.5"H X 19"W



## RIVETED ROUND WASH TUB WITH HANDLES

A MEDIUM SIZED RIVETED TUB. [HANDLES NOT WEIGHT-BEARING.]  
ITEM# 660 18.5"H X 25"W



## RIVETED ROUND BASIN

THIS LARGE BASIN IS PERFECT FOR PLANTING BEAUTIFUL ROUNDS OF FLOWERS OR UNTAMED GRASSES.  
ITEM# 661 17"H X 45"W



## LOW SQUAT PLANTER

THIS HANDSOME SQUAT PLANTER SITS LOW TO THE GROUND AND FITS EASILY ON A PILLAR OR CORNER POST.  
ITEM# 419 12"H X 24"W



## MODERN RIM PLANTERS

ITEM# 461S 14"H X 17"W **NEW**

ITEM# 461 18.5"H X 23"W

ITEM# 462 26.5"H X 30"W



ITEM# 120XS 12"H X 13"W **NEW**

ITEM# 120S 14"H X 16"W **NEW**

ITEM# 120 17"H X 20"W

ITEM# 121 20"H X 24"W

ITEM# 122 25"H X 28"W



## ROLLED RIM PLANTER

ITEM# 123 25"H X 32"W

ITEM# 124 28"H X 36"W

ITEM# 125 30"H X 42"W

ITEM# 125XL 18"H X 42"W **NEW**

ITEM# 648 10"H X 20"W



#### HORTULUS FARM XXL VESSEL

HORTULUS FARM, WHERE HISTORY AND HORTICULTURE MEET, IS WHERE THIS VESSEL WAS ORIGINALLY SOURCED THROUGH FOUNDERS JACK STAUB AND RENNY REYNOLDS. SURE TO MAKE AN INCREDIBLE IMPACT IN ANY GARDEN.  
ITEM# 583XXL 40”H X 35”W



#### OVAL ROPE EDGED TABLETOP PLANTER

THIS ONE-OF-A-KIND LEAD ORIGINAL WAS RESTORED TO ENSURE THAT THIS BEAUTIFUL SILHOUETTE WILL EXIST NOW AND INTO THE FUTURE. ENJOY THIS PLANTER ON AN INDOOR OR OUTDOOR TABLETOP.  
ITEM# 678 10”H X 34”W X 18”D  
[TOP OPENING: 24”W]



#### ROPE EDGED TABLETOP

THIS ROPE EDGED TABLETOP WAS CAST TO CREATE A ZINC-LIKE REPLICA THAT CAN BE USED ON ANY TABLE BASE. SHOWN HERE ON OUR LION PLANTER [SEE PAGE 50].  
ITEM# 516 1”H X 42”W



#### SPANISH RING POT

CAST FROM A HAND-CARVED STONE ORIGINAL, THIS REPLICA REFLECTS ITS FULL BEAUTY AND RICH DETAIL.  
ITEM# 551 20”H X 26”W



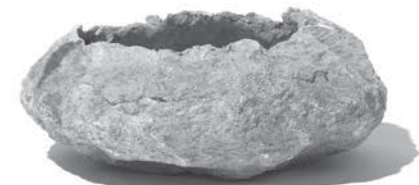




#### ALPINE GARDEN TROUGHS

ALPINE PLANTS – THE SMALL, SLOW-GROWING CULTIVARS NATIVE TO ROCKY SOIL – SIT COMFORTABLY INSIDE THESE NATURAL STONE-LIKE TROUGHS.

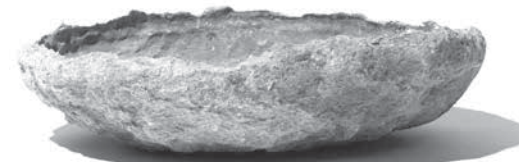
ITEM# 471S	SMALL	5”H X 26”W X 20”D
ITEM# 471M	MEDIUM	7.5”H X 26.5”W X 20”D
ITEM# 471L	LARGE	7”H X 33”W X 20”D
ITEM# 471XS	SQUARE TABLETOP [NOT SHOWN]	7”H X 10”W X 10”D
ITEM# 471SQ	SQUARE TABLETOP [NOT SHOWN]	8”H X 15”W X 15”D <b>NEW</b>
ITEM# 471RT	RECTANGULAR TABLETOP [NOT SHOWN]	7”H X 33”W X 10”D



#### ALPINE BOWL I

THIS SHALLOW BASIN IS A PERFECT TABLETOP ACCESSORY FOR A SMALL PLANTING OF SUCCULENTS OR OTHER LOW GROWING CULTIVARS.

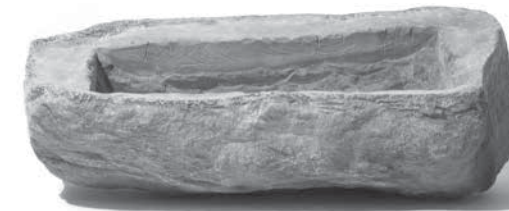
ITEM# 614S 6.5”H X 16”W



#### ALPINE BOWL II

THE STONE FINISH OF THIS SHALLOW BASIN MAKES AN INTRIGUING SCULPTURAL PIECE FOR INSIDE OR OUT AND CAN BE PAIRED WITH ALPINE BOWL I TO MAKE A PLEASING TABLETOP DISPLAY.

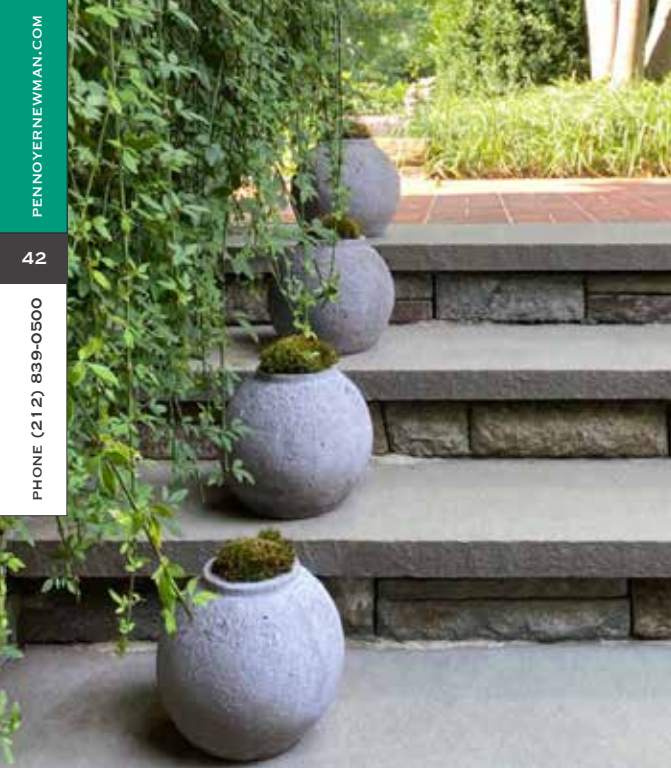
ITEM# 614L 5”H X 20”W



#### TWOMBLY CONTOURED TROUGH

VERMONT NATIVE, ARBORIST AND NURSERYMAN KEN TWOMBLY CARVED THIS ORIGINAL STONE AS A GIFT FOR HIS WIFE PRISCILLA AND PLACED IT INTO HER WORLD-CLASS ALPINE GARDEN. HERE IT IS IN ITS REPLICA FORM FOR YOU TO ALSO ENJOY.

ITEM# 471XL 12”H X 36”W  
[PLANTING DEPTH: 8”]



**ROCK POT AND PRIMITIVE POT**  
 CAST FROM CHISELED STONE ORIGINALS, THESE PRIMITIVE STYLE PLANTERS  
 LOOK AS REAL AS THE ORIGINALS WITHOUT THE WEIGHT. MAKE AN IMPACT  
 AND ENJOY THE ABILITY TO MOVE THEM AROUND YOUR GARDEN.

ITEM# 732	ROCK POT	8"H X 9"W [3"W OPENING]
ITEM# 735	PRIMITIVE POT	17"H X 28"W
ITEM# 735L	PRIMITIVE POT LARGE	24"H X 34"W <b>NEW</b>



**RIDDER ROUND**  
 A DESIGN THAT IS ARTFUL  
 AND ELEGANT AS ITS OWNER,  
 DESIGNER KATIE RIDDER.

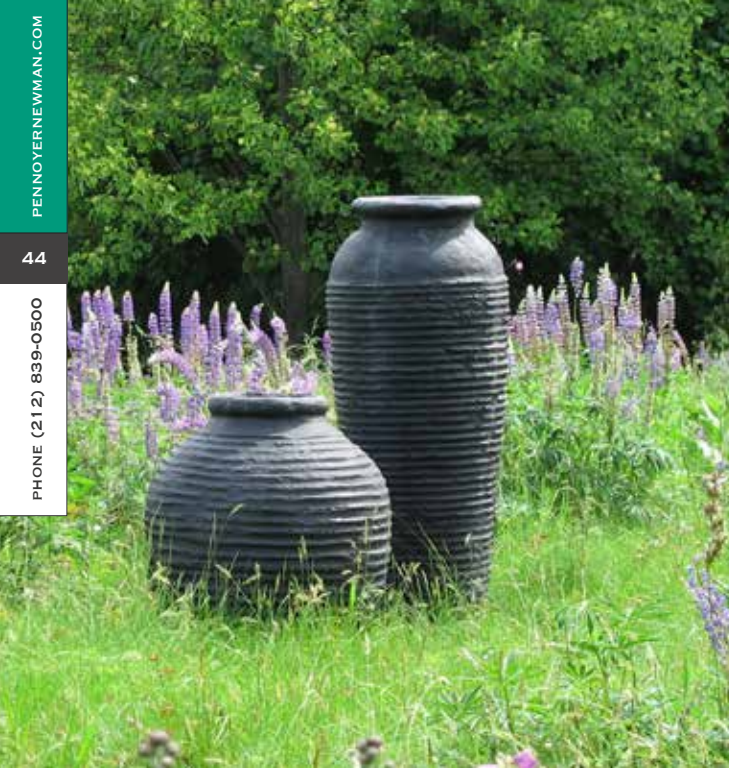
ITEM# 573	12"H X 9"W
ITEM# 573L	24"H X 18"W

**MID-CENTURY MODERN PLANTER**  
 THIS FOOTED PLANTER HAS BEEN  
 RECAST IN RESIN TO WITHSTAND  
 EXTREME WEATHER CONDITIONS.

ITEM# 693	18"H X 21"W
-----------	-------------







## BEEHIVE POTS

A	ITEM# 474S	SMALL	26" H X 20" W
B	ITEM# 474L	LARGE	36" H X 30" W
C	ITEM# 420S		38" H X 22" W
	ITEM# 420M		48" H X 22" W
	ITEM# 420L		58" H X 22" W
	ITEM# 420XL		68" H X 22" W



A



B



C



C



A



B

## SCHWAB FAMILY HOSE HOLDERS

THESE PLANTERS WERE ENJOYED AT THE SCHWAB FAMILY ESTATE IN NEW JERSEY FOR MORE THAN 100 YEARS AND CAN NOW BE ENJOYED BY YOU. PLANT THIS BEAUTIFUL FORM AS IT IS OR USE IT TO SPIRAL YOUR GARDEN HOSE.

A	ITEM# 672S	SMALL	11" H X 17" W [13" OPENING; 9" BASE]
B	ITEM# 672M	MEDIUM	10" H X 22" W
C	ITEM# 672L	LARGE	20" H X 24" W [SHOWN AT RIGHT] [20" OPENING; 24" MIDLINE; 3.5" BASE]







**FLUTED ROUND PLANTER ▼**  
 THIS POT IS PERFECTLY SIZED FOR BOXWOOD MOUNDS, TREES OR FLOWERS,  
 OR CAN BE CONVERTED INTO AN OUTDOOR WATER FOUNTAIN [UPON REQUEST].  
 ITEM# 615      19"H X 34.5"W



**▲ MORTIMER PLANTER**  
 A HARD-TO-FIND PLANTER THAT HAS BEEN CAST AND PLANTED [AT LEFT]  
 TO ILLUSTRATE THE PERFECT POT-TO-PLANT RATIO. MORTIMER GARDENS,  
 LLC, INSTALLED THIS EGG AND DART PLANTER IN A DISTINGUISHED PIPING  
 ROCK GARDEN.  
 ITEM# 574      20"H X 15"W [SOIL DEPTH 16"]

**FLUTED SQUARE PLANTER**  
 NOSTALGIA COMES ALIVE WITH THIS  
 PLANTER THAT PROVES OLD IS NEW AGAIN.  
 ITEM# 579S    SMALL    11.5"H X 12"W X 12"D  
 ITEM# 579L    LARGE    16"H X 16"W X 16"D



**PETAL GARDEN PLANTER**  
 CAST FROM 20<sup>TH</sup> CENTURY FRENCH PLANTERS.  
 BOTH FUNCTIONAL AND FABULOUS.  
 A    ITEM# 689S    20"H X 20"W  
     [11"W TOP OPENING / 9"W BASE]  
 B    ITEM# 689    29"H X 11.25"W  
     [12"W TOP OPENING / 11"W BASE]







**HOUR GLASS URN/PLANTER**  
CAST FROM A WOOD ORIGINAL, THIS  
URN HAS AN 8" PLANTING DEPTH.  
ITEM# 417 18"H X 17.75"W



**COMPOTE BOWL**  
ITEM# 553 12"H X 31"W  
[11"W BASE]



**OLIVE JAR**  
THIS PLANTER WAS CAST FROM A GERTRUDE  
JEKYLL ORIGINAL.  
ITEM# 030 19"H X 21"W

**MORGAN NILE RIVER VESSELS**

- A ITEM# 580A 21.5"H X 21.5"W [6" AT BASE / 11" OPENING]  
B ITEM# 580B 23"H X 24"W [8" AT BASE / 11.5" OPENING]



**JP MORGAN AMPHORA POT**  
THIS VESSEL, ORIGINALLY COLLECTED BY JP MORGAN, WAS AN ANCIENT  
EGYPTIAN STORAGE JAR THAT HAS BEEN CAREFULLY RESTORED TO  
EXTEND ITS LIFE FOR GENERATIONS TO COME.  
ITEM# 687 31"H X 26"W





#### ART DECO PLANTER

CAST FROM AN ENGLISH CHISELED STONE ORIGINAL, THIS PLANTER STYLE IS REFLECTIVE OF OF THE ARTS AND CRAFTS MOVEMENT OF THE LATE 19<sup>TH</sup> CENTURY.

ITEM# 563 17”H X 18.5”W X 18.5”D



#### ENGLISH COTSWOLDS PLANTER

THE COTSWOLDS AREA, SOUTH OF CENTRAL ENGLAND, IS WHERE THIS BEAUTIFUL CIRCA 1920 STONE ORIGINAL WAS SOURCED. THE CARVINGS ARE REMINISCENT OF THE MEDIEVAL VILLAGES THAT LIVE ON IN THIS CENTURIES-OLD BUT NEWLY-CAST PLANTER.

ITEM# 658 15”H X 18”W



#### MACKENZIE PLANTER

AFTER RESTORING THE ORIGINAL OF THIS PLANTER, PENNOYER NEWMAN IS PROUD TO UNVEIL IT ANEW – PROVING THE POWER OF PRESERVATION.

ITEM# 576 20”H X 22”W



#### PASTORAL TAPESTRY PLANTER

PASTORAL LANDSCAPES ARE DEPICTED IN THIS TAPESTRY-INSPIRED PLANTER.

ITEM# 623 9”H X 11”W



◀ **BIRD TAPESTRY PLANTER**  
BIRDS AND PHEASANTS ARE DEPICTED IN THIS TAPESTRY-INSPIRED PLANTER.

ITEM# 624 9”H X 11”W



#### ◀ NEW YORK BOTANICAL PLANTER

THIS CONTAINER HAS A DESIGN OF DECORATIVE PEACOCKS WITH MEDALLIONS AROUND THE PERIPHERY. THE ORIGINAL RESTS AT THE NEW YORK BOTANICAL GARDEN.

ITEM# 001 14”H X 19”W

ITEM# 621 13”H X 15.5”W



#### FLORAL BOWL

CAST FROM AN ANTIQUE STONE ORIGINAL, THE FLORAL MOTIF AND SIZE WORK BEAUTIFULLY ON STEP PLATFORMS OR ATOP COLUMNS AND TABLETOPS.

ITEM# 625 10”H X 22”W





A



B



C



### PARTHENON PLAQUE CONTAINER

AT THE END OF THE 19<sup>TH</sup> CENTURY, THE PRACTICE OF TAKING IMPRESSIONS OF THE PARTHENON WAS BANNED. THESE FRIEZE IMPRESSIONS, TAKEN BEFORE THAT TIME, ARE ILLUSTRATED ON EACH SIDE OF THIS BEAUTIFUL CONTAINER.

ITEM# 007

20"H X 26"W X 26"D

### PARTHENON PLAQUES

INDIVIDUAL PLAQUES MAKE DECORATIVE ACCENTS TO GARDEN WALLS, SWIMMING POOL INTERIOR WALLS, OR ON ANY INTERIOR AND/OR EXTERIOR SURFACE.

A	ITEM# 057	HORSE REARING PLAQUE	17"H X 22"W X 1"D
B	ITEM# 056	HORSEMAN AND TROJAN PLAQUE	17"H X 22"W X 1"D
C	ITEM# 058	TWO HORSEMEN PLAQUE	17"H X 22"W X 1"D
	ITEM# 057XXL	HORSE REARING PLAQUE, XX-LARGE	42"H X 55"W X 2"D [NOT SHOWN]



PARTHENON PLAQUE CONTAINERS AS FEATURED AT CRANE ESTATE, IPSWICH, MA,  
WITH WHISKEY BARREL [SEE PAGE 75]





### LION'S HEAD ▶

THE ROYAL LION IS AVAILABLE AS A DECORATIVE WALL MOUNT OR AS A WATER-ENABLED SPOUT.

10"H X 10"W X 6"D

ITEM# 077 WITHOUT SPOUT

ITEM# 077S WITH SPOUT



### LION WINDOW BOX

ITEM# 076 9"H X 38"W X 14"D



### ◀ LION WITH SHIELD

CAST FROM A J.P. MORGAN ORIGINAL, THIS LION WITH SHIELD STATUARY WAS REPLICATED FROM THE COLLECTION AT ROUND BUSH.

ITEM# 572 35"H X 14.5"W X 16"D



### GRAND LION PLANTER

GRAND IN SIZE AND APPEARANCE, THIS CLASSIC LION PLANTER WILL ADD GRACE TO COURTYARDS AND GARDENS.

ITEM# 438 39"H X 42"W

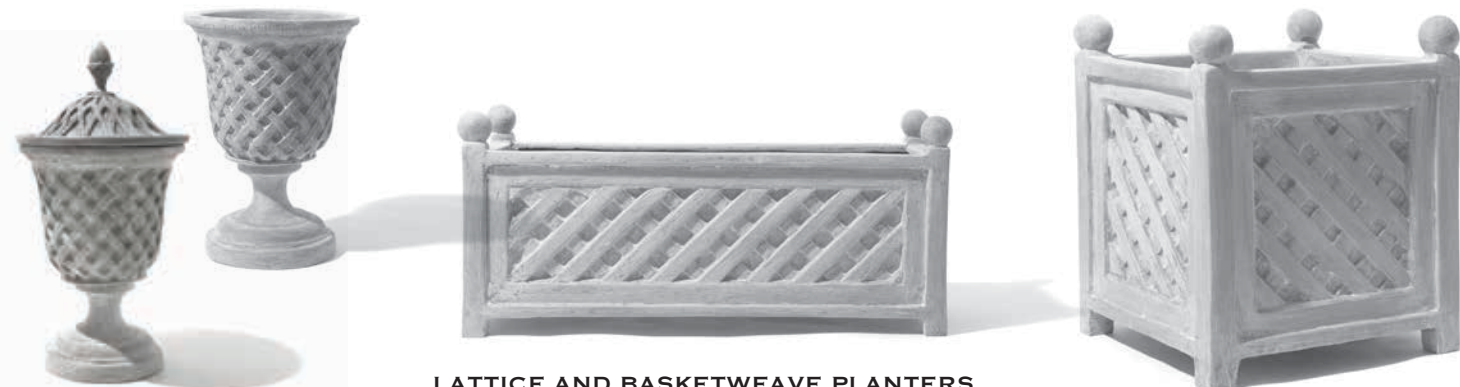


### LION PLANTER

CAST FROM A COE FAMILY LEAD ORIGINAL, THIS LION PLANTER WORKS WELL IN CLASSICAL OR CONTEMPORARY SETTINGS.

ITEM# 118 26"H X 24"W [21"W AT BASE]





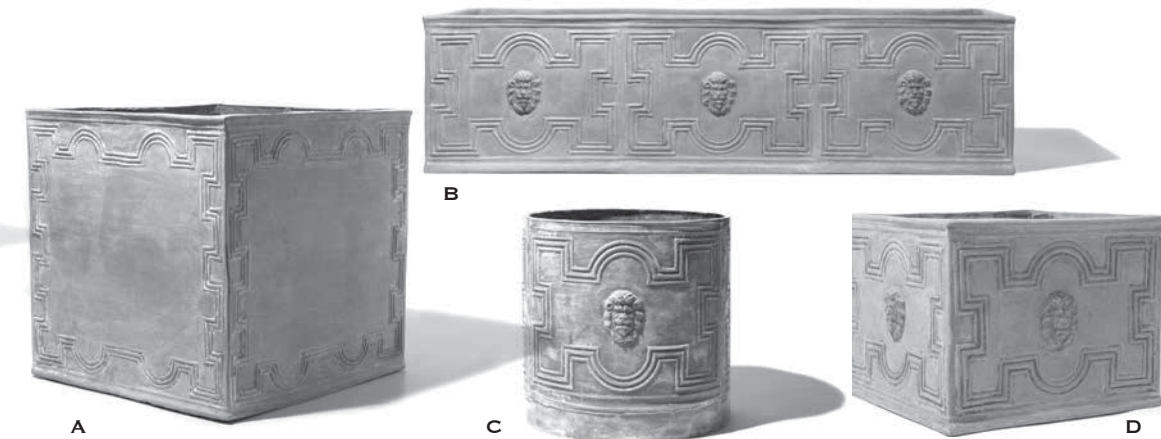
### LATTICE AND BASKETWEAVE PLANTERS

ADD A TOUCH OF FRENCH FORMALITY TO YOUR GARDEN WITH THESE LATTICE AND BASKETWEAVE PLANTERS.



ITEM# 100	LATTICE URN WITHOUT TOP	18"H X 13.5"W
ITEM# 101	LATTICE URN WITH TOP	22"H X 13.5"W
ITEM# 102	LATTICE RECTANGULAR	17"H X 36"W X 14"D
ITEM# 107	LATTICE SQUARE PLANTER	20"H X 17"W X 17"D
ITEM# 108	LATTICE SQUARE PLANTER	26"H X 27"W X 27"D
ITEM# 104XS	BASKETWEAVE ROUND PLANTER	8"H X 21"W <b>NEW</b>
ITEM# 104S	BASKETWEAVE ROUND PLANTER	10"H X 14"W <b>NEW</b>
ITEM# 104	BASKETWEAVE ROUND PLANTER	12"H X 21.5"W
ITEM# 105	BASKETWEAVE ROUND PLANTER	14"H X 18.5"W
ITEM# 106	BASKETWEAVE ROUND PLANTER	16.5"H X 23"W
ITEM# 106XL	BASKETWEAVE ROUND PLANTER	24"H X 27"W <b>NEW</b>

### THE ELIZABETHAN PLANTER COLLECTION



THESE GARDEN CONTAINERS ARE REFLECTIVE OF THE ELIZABETHAN PERIOD. USE THEM TO CREATE AN OUTDOOR ROOM OR TO MARK THE STRAIGHT LINE AREAS OF YOUR GARDEN.

A	ITEM# 439	ELIZABETHAN II	32"H X 30"W X 30"D
B	ITEM# 442	ELIZABETHAN I TROUGH	16"H X 60"W X 20"D
C	ITEM# 610	ELIZABETHAN ROUND I	18.5"H X 18"W
D	ITEM# 065	ELIZABETHAN I	16"H X 20"W X 20"D





## THE MODERN FARMHOUSE COLLECTION

### DUTCH RECTANGULAR PLANTER

WE DOUBLED THE WIDTH OF OUR SINGLE DUTCH PLANTER TO CREATE A RECTANGULAR SIZE FOR LARGER INSTALLATION POINTS.

ITEM# 577 28"H X 48"W X 24"D



### DUTCH PLANTER

THIS PLANTER DESIGN WAS INSPIRED BY DOORS ON CARRIAGE HOUSES, BARNs AND STABLES.

ITEM# 459 28"H X 24"W X 24"D

**CONTEMPORARY CEDAR PLANK PLANTER**  
THE FORM, ORIGINALLY MADE FROM CEDAR PLANKS, WAS CAST TO CREATE THIS GENEROUS PLANTER LARGE ENOUGH TO ACCOMMODATE TREES.

ITEM# 543 30"H X 30"W [TOP] / 28"W [BASE]





#### VINTAGE WASHTUB

RESTORING THE CENTURIES-OLD TRADITION OF THE WASHTUB, THIS RESIN REPRODUCTION IS GUARANTEED NOT TO RUST OR DISINTEGRATE FROM THE BOTTOM UP.

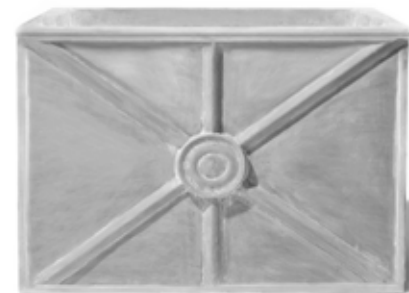
ITEM# 565      20.5"H X 18.5"W



#### GALVANIZED POT

A HEAVY-DUTY GALVANIZED POT HAS BEEN CAST TO BE USED AS A PLANTER FOR YEARS TO COME. [HANDLES NOT WEIGHT BEARING.]

ITEM# 527      21.5"H X 22"W [26"W WITH HANDLES]



#### FRENCH VINTAGE PLANTERS

INFLUENCED AND MADE FROM FRENCH VINTAGE GALVANIZED STEEL PLANTERS, THIS SERIES CAN BE USED SIDE-BY-SIDE ON TERRACE WALLS OR AS A STAND-ALONE CENTERPIECE.

ITEM# 628S	SQUARE [ART ON ONLY ONE SIDE]	22"H X 22"W X 18"D
ITEM# 628M	SQUARE [ART ON ALL FOUR SIDES]	22"H X 22"W X 22"D
ITEM# 628R	RECTANGULAR [ART ON ONLY ONE SIDE]	22"H X 28"W X 18"D

#### THE PARK AVENUE WINDOW BOX AND RECTANGULAR PLANTER

THIS PLANTER, CENTER PLACEMENT BELOW, WAS DESIGNED TO WORK WELL IN FRONT OF PARAPET WALLS, CREATING BEAUTIFUL LINEAR GARDEN PLANTINGS ON ANY TERRACE OR BALCONY. CUSTOM SIZES AVAILABLE.

ITEM# 590	WINDOW BOX	14"H X 38"W X 16.75"D
ITEM# 591	RECTANGULAR	18"H X 60"W X 16.75"D
ITEM# 591B	RECTANGULAR	16"H X 68"W X 16"D



## THE IRON GRID PLANTER COLLECTION



THE ICONIC STYLE OF THESE ORNATE IRON GRID PLANTERS REPRESENTS A FORM THAT DATES BACK TO THE TURN-OF-THE-CENTURY. THE ORIGINALS, WHICH WERE MADE OF LEAD, WERE FAVORED BY ARCHITECTS AND OFTEN USED IN GRAND BUILDINGS AND PUBLIC SPACES.

ITEM# 401XS

EXTRA SMALL

16"H X 16"W X 16"D

ITEM# 401S

SMALL

20"H X 20"W X 20"D

ITEM# 401M

MEDIUM

24"H X 24"W X 24"D

ITEM# 401L

LARGE

30"H X 30"W X 30"D

ITEM# 401XL

EXTRA LARGE

36"H X 36"W X 36"D



As seen at  
THE WHITE HOUSE  
WASHINGTON D.C.



#### GARLAND PLANTER

A CLASSIC ROUND PLANTER WITH SEA SHELL MOTIF AT ITS BASE.

ITEM# 115	16" H X 20" W
ITEM# 116	20" H X 24" W
ITEM# 129	20" H X 28" W



#### THE ROYAL CROWN PLANTER

THIS ROYAL CROWN PLANTER, CAST FROM A 19<sup>TH</sup> CENTURY FRENCH ZINC ORIGINAL, WAS UNVEILED AT THE WHITE HOUSE AND AT THE SUSAN G. KOMEN FOUNDATION HOLIDAY HOUSE NYC. ENJOY ITS SPECTACULAR BEAUTY IN YOUR HOME.

ITEM# 508	30" H X 28" W
-----------	---------------







#### GRAPE OPHELIA POT

CLASSIC GREEK GARDEN DESIGN HARMONIZES WELL ON THE DECK, TERRACE OR GARDEN'S EDGE.

ITEM# 008 21"H X 20"W



#### FLORENTINE HEXAGON PLANTER

CAST FROM A CUSTOMER'S LEAD ORIGINAL THAT WAS SOURCED ON THEIR TRIP TO PARIS, WE CAST THIS BEAUTIFUL PLANTER TO EXTEND THE JOY TO YOU AND YOUR GARDEN, TOO.

ITEM# 680B 13"H X 18.5"W [11"W PANELS]



#### BAROQUE PLANTER

THIS PLANTER REFLECTS THE EXUBERANT STYLES OF 17<sup>TH</sup> CENTURY EUROPE.

ITEM# 126 24"H X 26"W



#### THE KING'S CROWN PLANTER

CAST FROM THE SINGLE SIDE OF A 1700'S FIREPLACE HEAT REFLECTOR, THIS SQUARE PLANTER IS ONE FOR ROYALTY EVERYWHERE AND CAN TRANSFORM ORDINARY GROUNDS INTO A GRAND GARDEN.

ITEM# 533 30"H X 38"W X 38"D



#### MORGAN DELLA ROBBIA PLANTER

CAST FROM AN ORIGINAL DELLA ROBBIA CERAMIC POT FORMERLY OWNED BY J.P. MORGAN. A PENNOYER NEWMAN EXCLUSIVE.

ITEM# 002 20"H X 25"W

#### LION PLAQUE AND PLANTER

MADE FROM A FIREPLACE HEAT REFLECTOR PANEL, THIS ORNATE LION MAKES A WONDERFUL WALL PLAQUE OR PLANTER. ALSO CUSTOMIZABLE, THESE PANELS CAN BE JOINED TOGETHER TO CREATE RECTANGULAR SHAPES AS WELL.

ITEM# 557 LION PANEL PLAQUE 22"H X 18"W X 1"D

ITEM# 558 LION PANEL PLANTER 22"H X 18"W X 18"D



#### PENNSYLVANIA RAM HEAD URN

MAKES A GORGEOUS STAND-ALONE PLANTER, OR CAN BE ALTERED BY INSTALLING COPPER TUBING INTO EACH OF THE FOUR RAM HEADS FOR USE AS A GARDEN FOUNTAIN.

ITEM# 611 18"H X 24"W



#### DIAMOND GARGOYLE PLANTER

CAST FROM AN OLD CONCRETE ORIGINAL, THIS PLANTER IS GENEROUSLY SIZED FOR DOOR ENTRANCE AREAS OR FOCAL POINTS IN ANY GARDEN.

ITEM# 473 27"H X 32"W



#### MORGAN LEAD POT

CAST FROM A J.P. MORGAN LEAD ORIGINAL. ALSO AVAILABLE AS A HALF POT WITH A FLAT BACK FOR WALL MOUNTING.

ITEM# 003 13"H X 15"W X 12"D

ITEM# 004 13"H X 15"W X 6"D [HALF]



#### TRUSCON SOLDIER POT

THIS DISTINCTIVE SWORD HEAD DESIGN HAS A WIDE OPENING MAKING IT AN ALL AROUND GOOD POT FOR PLANTS. EASY TO USE AND EASY TO MAINTAIN.

ITEM# 046 16.5"H X 27"W [12" ROUND BASE]



#### THE LADEW TOPIARY GARDENS CONTAINER

ORIGINALLY PURCHASED BY THE LATE HARVEY S. LADEW FOR HIS AMAZING TOPIARY GARDENS IN MONKTON, MARYLAND, THIS PLANTER HAS BEEN RESTORED AND RECAST TO PRESERVE ITS HORTICULTURAL LEGACY.

ITEM# 457 18"H X 24"W

VISIT LADEW TOPIARY GARDENS AT [WWW.LADEWGARDENS.COM](http://WWW.LADEWGARDENS.COM) TO SEE WHAT THE GARDEN CLUB OF AMERICA VOTED THE "MOST OUTSTANDING TOPIARY GARDEN IN AMERICA."

LADEW  
TOPIARY  
GARDENS





#### POINTED LEAF PLANTER

FROM THE ESTATE OF WALTER MAYNARD, THIS ELEGANT POINTED LEAF PLANTER ORIGINAL WAS CARVED OUT OF LIMESTONE. PENNOYER NEWMAN RESTORED IT AND CAST IT TO MAKE THIS TIMELESS HEIRLOOM TO LAST FOR GENERATIONS TO COME.

ITEM# 567      15.5"H X 19.25"W



#### ROUND CUPID PLANTER

THIS PLANTER DEPICTS CUPID DANCERS AND MAKES A ROMANTIC ADDITION TO ANY INDOOR OR OUTDOOR SPACE.

ITEM# 006      12"H X 15"W  
ITEM# 006L      15"H X 26"W **NEW**



#### HEX CHERUB POT

THIS POT REFLECTS THE TIMELESS BEAUTY OF OLD WORLD DESIGN.

ITEM# 578      8"H X 16"W



#### CHERUB WINDOW BOX

THIS BEAUTIFUL CHERUB WINDOW BOX IS CAST FROM A LAGIN PROPERTY ORIGINAL. THE EXTRAORDINARILY HEAVY ANTIQUE TERRA COTTA ORIGINAL HAD CRACKED IN NEW YORK'S HARSH WINTERS AND WAS RESTORED AND RECAST TO BE ENJOYED IN THEIR GARDEN AND OTHER GARDENS TO COME.

ITEM# 626      12"H X 47"W X 14.5"D



#### GLADIATORS WINDOW BOX

GLADIATORS FOUGHT IN FRONT OF THE EMPEROR OF ROME FOR GENEROUS PRIZE MONEY. THIS WINDOW BOX BEAUTIFULLY DEPICTS THESE BRAVE WARRIORS.

ITEM# 035      10.5"H X 20"W X 11"D

**ASSYRIAN BENCH**

FOUR INDIVIDUAL COMPONENTS INGENUOUSLY ASSEMBLE TOGETHER TO MAKE THIS HIGH-QUALITY CASTING OF AN ANCIENT ASSYRIAN BAS-RELIEF FORM. THIS IS A BEAUTIFUL SEAT FOR TWO PEOPLE TO RETREAT TO IN ANY GARDEN.

ITEM# 512 31"H X 36"W X 19"D

**ASSYRIAN FRIEZE AND WINDOW BOX**

THIS HIGH-QUALITY CASTING OF AN ANCIENT ASSYRIAN BAS-RELIEF DEPICTS ASSYRIAN AND TURKISH CONQUESTS. THE FRIEZE AND WINDOW BOX MAKE BEAUTIFUL ADDITIONS TO GREENHOUSES AND GARDEN ROOMS.

ITEM# 514 FRIEZE 13"H X 36"W X 2"D

ITEM# 513 WINDOW BOX 9"H X 25"W X 10"D

**CHINESE JAR**

THE DRAGON, ONE OF THE MOST ANCIENT AND REVERED SYMBOLS IN ORIENTAL ART, IS REFLECTED IN THIS EXTRAORDINARY PLANTER.

ITEM# 544 15"H X 14.5"W

**SÃO PAULO PLANTER**

ARCHITECTURAL MOLDINGS FROM A PALACE IN SÃO PAULO WERE USED TO CREATE THIS SCALLOPED PLANTER.

ITEM# 081 13"H X 19"W X 19"D



THE TWO ORIGINAL FRICK MARBLE FOUNTAIN PIECES WERE BROUGHT IN FROM THE CHATEAU THAT INSPIRED THE CONSTRUCTION OF VERSAILLES – THE VAUX-LE-VICOMTE. THIS REPLICA OF THE FOUNTAIN EXTENDS SPECTACULAR WORKS OF GARDEN ART FROM ONE GENERATION TO THE NEXT. [SPECIFY FOUNTAIN TOP WITH OR WITHOUT SPOUT]

ITEM# 078 FOUNTAIN TOP 22"H X 33"W X 4"D

ITEM# 079 FOUNTAIN BASE 16"H X 38"W X 20"D

**TIMPIDIOM FOUNTAIN TOP & VAUX-LE-VICOMTE FOUNTAIN BASE****ROMAN GODDESS PLAQUE**

THIS BEAUTIFUL AND GENTLE LOOKING GODDESS PLAQUE WILL ADD AN ARTFUL EDGE TO A GARDEN ROOM OR WALL. HANG OR RECESS INTO AN IVY WALL, OR USE TO DECORATE A SPACE INSIDE OR OUT.

ITEM# 634 18"H X 33.75"W X 5"D





**FRENCH FAUX BOIS PLANTERS**

FAUX BOIS, MEANING FALSE WOOD IN FRENCH, BRINGS THE ORGANIC SENSE OF THE WOODS INTO YOUR HOME WITH THESE TWO TREE STUMP STYLED SQUARE AND ROUND PLANTERS THAT HAVE BEEN CAST FROM OLD CONCRETE ORIGINALS. ENJOY THE MODERN EVOLUTION OF OUR CASTING.

ITEM# 663    ROUND    10.5"H X 15"W  
 ITEM# 664    SQUARE    9"H X 11.5"W [10.5"W AT BASE]

**TREE HOLLOW PLANTER**

THE ORIGINAL TREE STUMP HOLLOW WAS USED INDOORS TO STORE ORANGES FOR JUICING. THIS REPLICA MAKES A FABULOUS PLANTER CAST FROM NATURE.  
 ITEM# 570    14"H X 14"W [10" AT BASE]

**WOOLEN MILL BARREL**

MADE FROM AN ORIGINAL WOOLEN MILL BARREL, THIS CASTING PROVIDES A CONTAINER SHAPE TO COMPLEMENT A NATURALISTIC GARDEN.  
 ITEM# 506    25.5"H X 21.5"W

**WHISKEY BARREL**

CAST FROM AN AUTHENTIC WHITE OAK KENTUCKY BOURBON BARREL, THIS PLANTER IS ONE THAT WILL BE TREASURED AS A PART OF YOUR GARDEN FOR YEARS TO COME, AND IS GUARANTEED NOT TO ROT.  
 ITEM# 517    18"H X 24.5"W



## THE GRAPEVINE BASKET PLANTER COLLECTION



THESE BEAUTIFUL GRAPEVINE BASKET REPLICAS ARE REINFORCED AND CAST ONE AT A TIME. RESIN IS IMPERVIOUS TO WATER, AND THEREFORE YOU WILL HAVE THE LOOK OF BEAUTIFUL GRAPEVINE BASKETS THAT ARE GUARANTEED NOT TO ROT.

ITEM# 673	GRAPEVINE SQUARE	24"H X 24"W X 24"D
ITEM# 673L	GRAPEVINE SQUARE	24"H X 48"W X 48"D <b>NEW</b>
ITEM# 674	GRAPEVINE CYLINDER	25.5"H X 19"W
ITEM# 675	GRAPEVINE SQUARE FOR TABLETOP	5"H X 12"W X 12"D
ITEM# 676H	GRAPEVINE WINDOW BOX W/ HANDLES	10"H X 35"W X 22"D
ITEM# 676	GRAPEVINE WINDOW BOX W/O HANDLES	10"H X 29"W X 22"D

## GRAPEVINE WALL BASKET

CAST FROM AN OLD HAND-WOVEN GRAPE VINE BASKET, THIS PLANTER HAS A WIRE HOOK THAT CAN BE MOUNTED TO THE WALL FOR FLOWERS AND CASCADING VINES. [MOUNTING BRACKET NOT INCLUDED.]

ITEM# 559 22"H X 25"W X 17"D [9"W AT BASE]



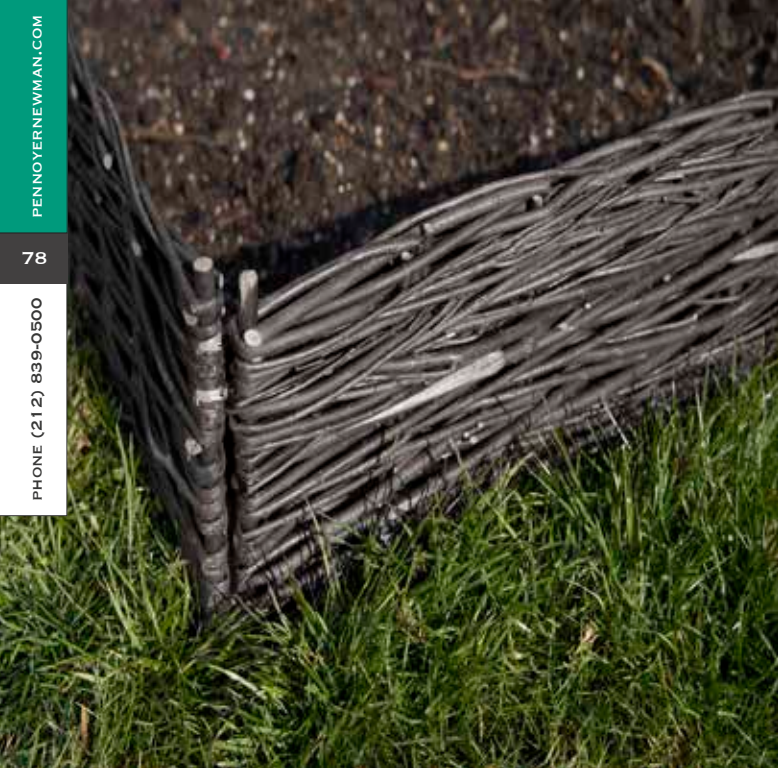
## PORTUGUESE WATER BASKETS

THE LATE DAVID BARRETT, A WELL-KNOWN INTERIOR DESIGNER, WAS THE FIRST TO CAST THESE INTRICATELY-WOVEN REED WATER BASKETS. MADE POPULAR IN PORTUGAL AND A HUGE PART OF THEIR FISHING HERITAGE, THESE BEAUTIFUL WORKS OF ART WITH THEIR INGENUOUS STYLING HAVE BEEN RECAST IN RESIN AND CAN BE PLANTED AND ENJOYED YEAR-ROUND FOR GENERATIONS TO COME.

ITEM# 670S 14"H X 13"W ITEM# 670L 18"H X 15"W







**GRAPEVINE ROUND BASKET**

THIS BASKET CAN ALSO BE CONVERTED INTO A HANGING BASKET.

ITEM# 692 7”H X 18”W

**MADOO GARDEN EDGE FENCING ▶**

ITEM# 518 18”H X 18”W X 1.5”DIA.  
[6” PUSHES INTO GROUND  
REVEALING 12” ABOVE GROUND.]



**WADDLING FENCING**

WADDLING IS A HANDMADE LATTICE THAT REQUIRES THIN BRANCHES BE WOVEN IN BETWEEN UPRIGHT STAKES TO ENCLOSE TREES AND CREATE BORDERS IN GARDENS. NOW MADE IN RESIN TO LAST THE TEST OF TIME. AVAILABLE IN OUR NEW DARK BROWN RESIN COLOR AS WELL. [INCLUDES TWO 6” REBAR GROUND STAKES.]

ITEM# 691 8”H X 39.5”W X .75”D

**GRAPEVINE TAPERED SQUARES**

ITEM# 690S SMALL	17”H X 14.5”W	[13” BASE]
ITEM# 690M MEDIUM	19”H X 18” W	[16” BASE]
ITEM# 690L LARGE	19”H X 22”W	[20” BASE]



**GRAPEVINE OVAL WITH HANDLES**

ITEM# 696 21.5”H X 26”W X 24”D  
[25”H W/ HANDLES]





**SPANISH PEDESTAL**  
 CARVED FROM A SPANISH ORIGINAL,  
 THE CARVINGS ON THIS PEDESTAL MAKE  
 IT A TREASURED GARDEN PIECE.  
 ITEM# 504     31" H X 14" W X 14" D



**ROUNDBUSH FINIAL II**  
 WITH BASKETWEAVE BASE  
 A WONDERFUL ACCENT PIECE THAT HAS  
 HISTORICAL PRECEDENCE AND POISE.  
 ITEM# 015B     28" H X 17" W



**ROUNDBUSH FINIAL**  
 THIS FINIAL IS CAST FROM A J.P. MORGAN  
 ENGLISH GARDEN LIMESTONE ORIGINAL.  
 ONE OF THE BEST YOU'LL FIND.  
 ITEM# 015     20" H X 15" W [11.5" BASE]



**ACANTHUS LEAF FINIAL**  
 INSTALL INTO STONE PILLARS OR  
 USE AS A STAND-ALONE GARDEN  
 MARKER.  
 ITEM# 702     22" H X 7.5" W



**PINEAPPLE FINIAL**  
 THE PINEAPPLE HAS TRADITIONALLY BEEN  
 A SYMBOL OF WELCOME. USE IN YOUR  
 OWN GARDEN TO MAKE YOUR GUESTS FEEL  
 WELCOME.  
 ITEM# 582L     28" H X 19.5" W



**COE HALL TWO FIGURE FINIAL**  
 THIS CASTING OF AN  
 EXTRAORDINARILY DECORATIVE  
 FINIAL IS A RARE TREASURE THAT  
 WILL GO ANYWHERE.  
 ITEM# 529     33.5" H X 27" W





#### ROUND CAP FINIAL

- ITEM# 435 16"H X 12"W  
[BASE: 10.5"]
- ITEM# 435L 24"H X 18"W  
[BASE: 12"] **NEW**

#### CLASSIC URN

COMPLEMENTS ANY ARCHITECTURAL STYLE.

- ITEM# 130S 19"H X 15"W [7" BASE]
- ITEM# 130 23"H X 15"W [7.5" BASE]
- ITEM# 031 28"H X 23"W [11.75" BASE]
- ITEM# 031H 28"H X 11.5"W [HALF POT WITH WIRE  
WALL MOUNT, 11.75" BASE] **NEW**
- ITEM# 131 34"H X 28"W [14.75" BASE]

#### PEDESTALS

A WONDERFUL WAY TO RAISE GARDEN URNS AND ORNAMENTS OFF THE GROUND FOR BETTER VIEWING AND PRESENTATION. AVAILABLE IN THREE STYLES; CUSTOM SIZES AVAILABLE UPON REQUEST. [SEE OUR WEBSITE FOR ADDITIONAL PEDESTAL STYLES.]

- ITEM# 413S CHELSEA PEDESTAL, SMALL 14"H X 11"W X 11"D
- ITEM# 413L CHELSEA PEDESTAL, LARGE 28"H X 19"W X 19"D
- ITEM# 414S MODERN PEDESTAL, SMALL 16"H X 11.5"W X 11.5"D
- ITEM# 414M MODERN PEDESTAL, MEDIUM [NO TOP MOLDING]  
28.5"H X 24"W X 24"D
- ITEM# 414L MODERN PEDESTAL, LARGE 32.5"H X 24"W X 24"D
- ITEM# 415 LAUREL LEAF PEDESTAL 21"H X 14.5"W [AT BASE] X  
13"W [AT TOP] X 13"D



#### ALPINE URN

A REPLICA OF A STONE CARVED ORIGINAL.

- ITEM# 619XS 16"H X 14"W [7" SQUARE BASE] **NEW**
- ITEM# 619S 25"H X 16"W [11" SQUARE BASE]
- ITEM# 619L 33"H X 21"W [12" SQUARE BASE]



#### MODERN URN

- SIMPLISTIC AND MODERN SHAPED.
- ITEM# 631 21.5"H X 18"W  
[13" SQUARE BASE]

#### FLUTED URN

- A TRADITIONAL OLD WORLD SHAPE.
- ITEM# 616 20.5"H X 13.5"W  
[11.5" SQUARE BASE]





**OBELISK**  
ITEM# 727 40"H X 10"W X 10"D



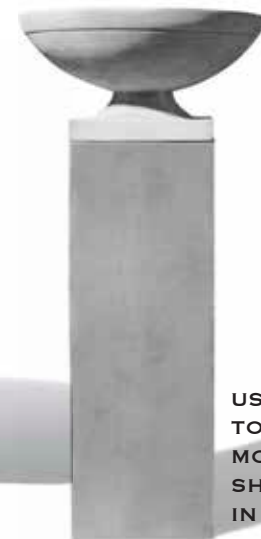
**RIBBED GARDEN URN**  
ITEM# 701 18.5"H X 27"W  
[12" BASE]



**ROUND COLUMN PEDESTAL**  
ITEM# 505 39"H X 16"W



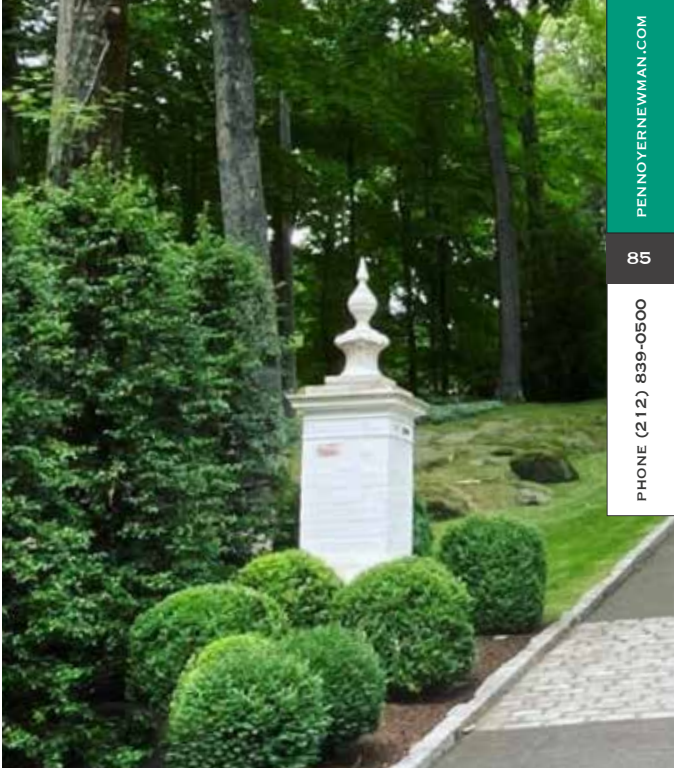
**URN ON TAPERED PEDESTAL**  
A CLASSIC URN MADE FROM  
A CAST IRON ORIGINAL. [8"  
PLANTING DEPTH.]  
ITEM# 475 33"H X 22"W



ITEM# 649 MODERN BOWL  
13"H X 27"W [15.25" SQUARE BASE]  
ITEM# 681 MODERN PEDESTAL, TALL  
48"H X 15.25"W X 15.25"D

**DECORATIVE DRIVEWAY  
MARKER ▶**  
ITEM# 781 36"H X 16"W

**MODERN BOWL  
WITH URN BASE**  
USE SEPARATELY OR JOIN  
TOGETHER WITH OUR TALL  
MODERN PEDESTAL AS  
SHOWN. PEDESTAL AVAILABLE  
IN CUSTOM HEIGHTS.





**WALL HALL URN**

ITEM# 036 25"H X 19"W  
[14"W ROUND BASE]

**ENGLISH GARLAND URN**

ITEM# 466 23"H X 20"W  
[9.25" BASE]

**ROSE URN**

ITEM# 463 23"H X 17"W

**BIRMINGHAM URN**

ITEM# 699 15"H X 18.75"W

**BROADLEAF URN AND POT**

THIS PLANTER AND URN ARE REMINISCENT OF ANCIENT ROMAN ART. A BEAUTIFUL DUET TOGETHER, THE COMPONENTS CAN ALSO BE USED AS SEPARATE PLANTERS. BASICALLY, ONE PLANTER THREE WAYS.

ITEM# 666	URN TOP & BASE	31"H X 22"W	[11" SQUARE BASE]
ITEM# 667	TOP ONLY	14"H X 22"W	[11" ROUND BASE]
ITEM# 668	BASE ONLY	17"H X 11"W	[11" SQUARE BASE]



▲ OLD WESTBURY WALLED GARDEN URN

THIS BEAUTIFUL URN WAS CAST FROM AN ORIGINAL LOCATED IN THE WALLED GARDEN OF OLD WESTBURY GARDENS, THE FORMER ESTATE OF THE JOHN SHAFFER PHIPPS FAMILY, HEIRS TO A U.S. STEEL FORTUNE. OUR REPRODUCTION HAS REPLACED THE CONCRETE ORIGINAL THAT DETERIORATED SINCE ITS FIRST INSTALLMENT IN THE GARDENS IN 1906.  
ITEM# 561 21”H X 31.5”W [12” SQUARE BASE; SOIL DEPTH: 11”]

SQUAT URN ▼

ELEGANTLY APPOINTED, THIS URN IS BEAUTIFUL WHEN INSTALLED ON GARDEN PILLARS AND GATES. [SEE SMALL SQUAT URN ON PAGE 93.]

ITEM# 039 SMALL 8”H X 10”W [5” SQUARE BASE]  
ITEM# 091 MEDIUM 16”H X 21.5”W [8.75” SQUARE BASE]



OLD WESTBURY GARDEN URN ▲

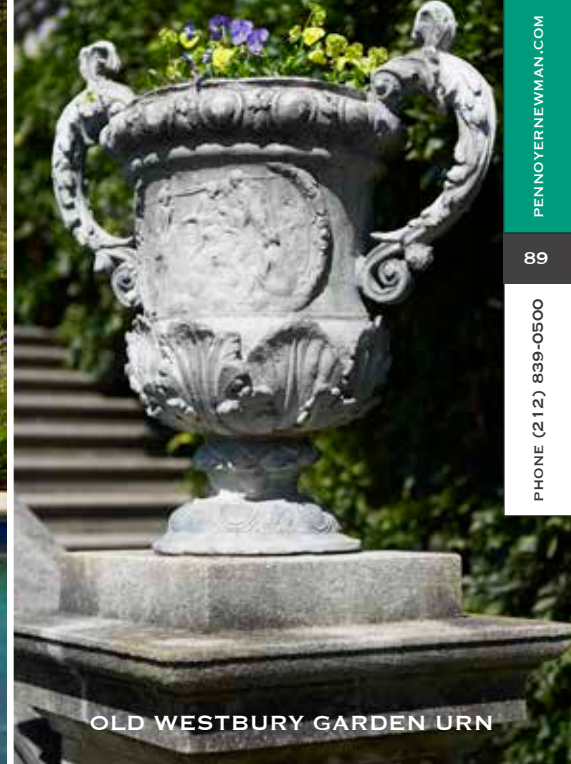
COPIED FROM A LEAD ORIGINAL AT OLD WESTBURY GARDENS, THE MAIN BODY DEPICTS AN ANTIQUITY SCENE AND THE LOWER PORTION HAS A LEAF MOTIF WITH A DECORATIVE CIRCULAR BASE. [11.25” ROUND BASE.]  
ITEM# 511A WITH HANDLES 28”H X 25”W X 15”D  
ITEM# 511B WITHOUT HANDLES 25”H X 15”W X 15”D



OLD WESTBURY WALLED GARDEN URN



SQUAT URN



OLD WESTBURY GARDEN URN





**PETITE GARLAND**  
ITEM# 023 7"H X 10"W



**PETITE FLORENTINE SQUARE**  
ITEM# 644 4"H X 4.5"W



**EMBASSY ORCHID PLANTER**  
ITEM# 629 8"H X 9"W



**CHERUB ORCHID PLANTER**  
ITEM# 641 9"H X 8"W



**HEXAGON POT**  
A POT WITH CLASSIC CHARACTER. ASK ABOUT OUR UMBRELLA POLE OPTION.

ITEM# 019 5.75"H X 9"W



**FRUIT POT**  
FLORAL AND FRUIT ELEMENTS SURROUND THE TOP OF THIS CLASSIC POT.

ITEM# 038S 11"H X 14"W  
ITEM# 038M 18"H X 24"W



**OLD WESTBURY II**  
THE ORIGINAL, LOCATED AT OLD WESTBURY GARDENS, HAS BEEN RECAST AND IS THE PERFECT HEIGHT FOR A DECORATIVE CENTERPIECE.

ITEM# 464 13"H X 14"W



**CHERUB URN**  
THIS BEAUTIFUL URN HAS BEEN PRESERVED AND RECAST TO PROTECT IT FROM RUIN. THE DANCING GREEK GODDESS MOTIF IS REFLECTIVE OF 19<sup>TH</sup> CENTURY EUROPEAN DESIGN AND IS SURE TO MAKE AN ELEGANT STATEMENT INSIDE OR OUTSIDE YOUR HOME.

ITEM# 669 37"H X 19"W [15" SQUARE BASE]



**FERN URN**  
A PAIR OF MATCHING URNS AT THE ENTRANCE OF A HOME OR THE START OF A GARDEN PATHWAY ADDS A DISTINCTIVE ACCENT.

ITEM# 033 35"H X 23"W  
[15.75" SQUARE BASE]

As seen at  
**THE WHITE HOUSE**  
WASHINGTON D.C.





### GUGGENHEIM CURVED, STRAIGHT, AND S-SHAPED BENCHES

THESE UNIQUE CURVED AND STRAIGHT TOP BENCHES OF ITALIAN DESIGN WERE CAST FROM ORIGINALS AT THE GUGGENHEIM ESTATE IN PORT WASHINGTON, NEW YORK. BOTH STYLES ARE: 19"H X 16.5"D

ITEM# 054C CURVED TOP [54"L]

ITEM# 054S STRAIGHT TOP [53"L]



### SQUAT URN

THIS URN HAS THE LOOK OF IRON AGE BRITISH POTTERY. [SEE MEDIUM ON PAGE 88.]

ITEM# 039 SMALL 8"H X 10"W

ITEM# 091 MEDIUM 16"H X 21.5"W

### MORGAN LEAD POT

CAST FROM A J.P. MORGAN LEAD ORIGINAL. ALSO AVAILABLE AS A HALF POT FOR WALL MOUNTING.

ITEM# 003 13"H X 15"W X 12"D

ITEM# 004 13"H X 15"W X 6"D

[HALF POT]

### THE NORTH WIND POT

A MYSTICAL FACE IS CAST INTO A DECORATIVE VINE MOTIF.

ITEM# 024 5"H X 9.5"W

### FRICK GARDEN POT

CAST FROM A FRICK FAMILY ORIGINAL, THIS POT ILLUSTRATES A ROMAN SOLDIER PARADE.

ITEM# 005 9"H X 13"W

### PETITE OVAL

WITH GARLAND SWAG, THIS POT IS THE PERFECT SIZE FOR GROWING HERBS AND BULBS.

ITEM# 047 4.5"H X 10"W





**ROUNDBUSH FROG**  
THIS WONDERFUL FROG CAN BE CONVERTED INTO A SPOUT [SEE PHOTO AT LEFT], OR ENJOYED AS A DECORATIVE PIECE IN YOUR GARDEN. THE ORIGINAL WAS AT ROUNDBUSH, J.P. MORGAN'S FAMILY HOME IN LOCUST VALLEY, NEW YORK.

ITEM# 568      9.5"H X 12"W X 12"D



**LINDSAY & LOULIE FROG AND DESK FROGS**  
ITEM# 586      7.5"H X 9.25"W X 9.75"D  
ITEM# 587A    DESK FROG A: 4.5"H X 4.75"W X 6"D  
ITEM# 587B    DESK FROG B: 5"H X 4.25"W X 4.75"D



**ALLIGATOR BIRD BATH**  
THIS DISTINCTIVE CASTING WAS ORIGINALLY CARVED BY ARTISANS COMMISSIONED TO BUILD ST. JOHN'S CHURCH IN LATTINGTOWN, NEW YORK, THE CHURCH J.P. MORGAN BUILT FOR HIS DAUGHTER, FRANCES TRACY PENNOYER.

ITEM# 044              47"H X 28"W  
ITEM# 044S HALF      32"H X 28"W



**ROUNDBUSH TURTLE**  
THIS LOVELY TURTLE CAN BE ENJOYED AS IS, OR EQUIPPED TO SPOUT WATER FROM ITS MOUTH [SEE RIGHT], OR HAVE A HOLE DRILLED IN ITS BACK TO ACCOMMODATE AN UMBRELLA POLE. SPECIFY UMBRELLA OR SPOUT OPTION.

ITEM# 045      8"H X 13"W X 16"L





◀ ▲ **HORSE HEAD**  
ITEM# 059 19"H X 4"W X 14"D



ITEM# 803



**POWER'S DOG**  
9.75"H X 7.5"W X 7.5"D

**ABATTOIR COW AND RAM BUSTS**  
ITEM# 050 COW 9"H X 9"W X 8"D  
ITEM# 049 RAM 13"H X 13"W X 8"D



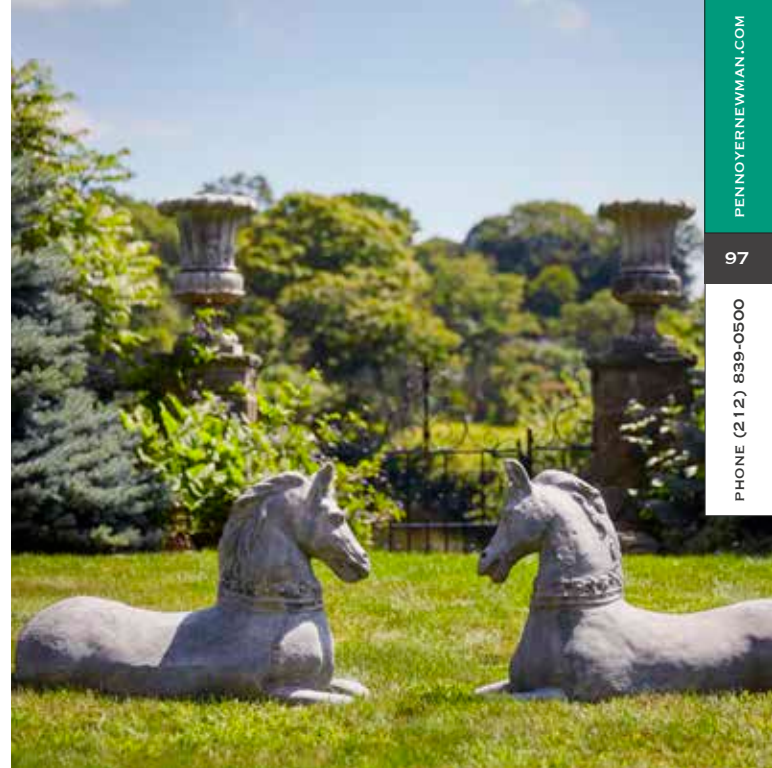
**FRENCH COUNTRY ROOSTER**  
ITEM# 063 22"H X 12"W



**HORSE FACING LEFT & RIGHT**  
THE NOBILITY OF THE HORSE IN HISTORY CANNOT BE DISPUTED. CELEBRATE THE POWER AND GRACE OF THE EQUINE WITH THESE TIMELESS DESIGNS.  
ITEM# 584R HORSE, RIGHT FACING 21"H X 33"W X 12"D  
ITEM# 584L HORSE, LEFT FACING 21"H X 33"W X 12"D



**WESTBURY LAMBS**  
AS SEEN AT THE GREY GARDEN AT OLD WESTBURY GARDENS, THE LEFT AND RIGHT FACING LAMBS ARE THE ICONIC GARDEN STATUARY THERE. NOW AVAILABLE FOR YOU TO ENJOY.  
ITEM# 509R LAMB, RIGHT FACING 22"H X 20"W X 11"D  
ITEM# 509L LAMB, LEFT FACING 22"H X 20"W X 11"D







◀ **THE EGYPTIAN HOUND**  
A REPLICA OF AN ANCIENT EGYPTIAN PHARAOH HOUND  
IS CAST FROM A HENRY CLAY FRICK FAMILY ORIGINAL.  
ITEM# 061      42"H X 16"L X 9"W



▲ **THE WHIPPET STATUARY**  
FAVORED BY THE NOBILITY OF ANCIENT TIMES, THIS WHIPPET STATUARY  
WAS CAST IN HONOR OF ROBIN NORRIS' SON RUPERT, FELLOW GARDEN  
PLANTER MANUFACTURER AND NURSERYMAN.  
ITEM# 635      16"H X 20"W



**ENGLISH HEDGEHOG STATUARY**  
ITEM# 636      7"H X 11"W



**ENGLISH RABBIT**  
ITEM# 066      13.5"H X 16"W X 8"D



**TEDDY BEAR DOORSTOP**  
ITEM# 470      14"H X 11"W X 7"D



**FANCY HILLS FOX**  
THE OLD CONCRETE ORIGINALS TO THESE BEAUTIFUL  
FOX REPLICAS WERE CREATED IN IRELAND, ENJOYED FOR  
YEARS IN MARYLAND, AND RECENTLY REPAIRED AND CAST  
FOR THE ENJOYMENT OF GENERATIONS TO COME.  
ITEM# 526    FOX ON CHASE    12.5"H X 34"W X 5.5"D  
ITEM# 535    FOX SITTING UP    18.5"H X 18"W X 8"D





#### TALL BLUE HERON

OUR TALL BLUE HERON IS SO LIFE-LIKE, YOU'LL THINK IT JUST LANDED IN YOUR GARDEN.

ITEM# 478 50"H X 36"W X 10"D [AT BASE]



#### PAUL'S HAWK

NAMED FOR THE LATE PAUL PENNOYER, THIS HAWK IS A TRIBUTE TO HIS LOVE OF BIRDS.

ITEM# 585 15"H X 6"W X 7.5"D



#### DOVES

CAST FROM CONCRETE ORIGINALS, THESE DOVES MAKE GREAT GARDEN ACCENT PIECES.

ITEM# 467 UPRIGHT 8"H X 9"W [4" BASE]

ITEM# 468 EATING 5.25"H X 11"W [5" BASE]



#### GREAT BLUE HERON

FAMOUS AMERICAN OIL PAINTER AND SCULPTOR F. EDWIN CHURCH [1876-1975] CREATED THE ORIGINAL OF THIS GREAT BLUE HERON. IDEAL FOR GARDENS, PONDS AND ENTRYWAYS, THIS WORK OF ART STANDS MAJESTICALLY ON A STURDY BASE.

ITEM# 017 30"H X 8"W X 19"D







### OTTER BIRD BATH

CAST FROM AN ORIGINAL BY SHAYNE HAYSOM, THE OTTER WAITS PATIENTLY FOR THE TURTLE'S SUBMERGENCE INTO THE BATH. ITS SURFACE, LIKE ALL OUR BIRDBATHS, PROVIDES GOOD TRACTION FOR THIRSTY BIRDS. THIS BIRDBATH BRINGS JOY TO GARDENERS OF ALL AGES.

ITEM# 018      10"H X 24"W



### SEALS BIRD BATH

INSPIRED BY THE SHORELINES OF BOOTH BAY HARBOR, MAINE, THIS BIRDBATH WILL CREATE ITS OWN HARBOR IN YOUR BACKYARD.

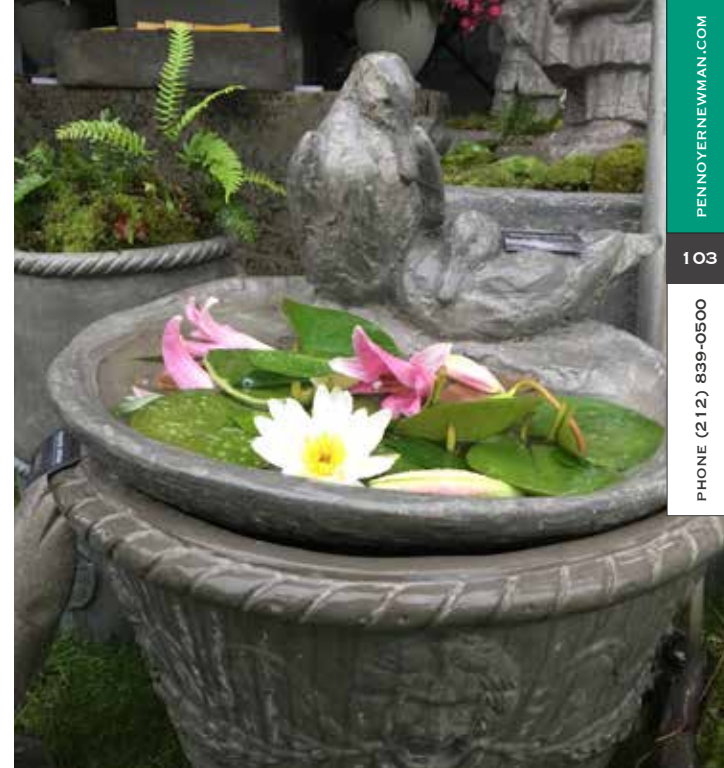
ITEM# 042      14"H X 22"W



### TWO DUCKS BIRD BATH

THE ORIGINAL, SCULPTED BY SHAYNE HAYSOM, A LONGTIME FRIEND OF THE PENNOYER FAMILY, WAS CARVED OF WOOD. WE'VE CAST IT SO YOU CAN ENJOY THE PEACEFULNESS IN YOUR GARDEN.

ITEM# 043      15"H X 25"W



**ARCHITECTURAL CAPITAL HEAD PLANTERS**

ONCE THE CAPITAL HEAD TO A GREEK COLUMN, THIS REPLICA HAS BEEN CONVERTED TO A PLANTABLE OBJECT THAT WORKS EXTREMELY WELL ON STAIRWAYS, POSTS AND PILLARS.

ITEM# 630      8'H X 21'W

**ARCHITECTURAL CAPITALS**

THESE REPLICAS OF DECORATIVE CAPITALS CAN BE USED AS TABLE BASES OR SIDE TABLES IN THE GARDEN.

ITEM# 416M      MEDIUM      18"H X 21"W

ITEM# 416L      LARGE      29"H X 28"W

**GARGOYLE**

CAST FROM A STONE ORIGINAL, THIS GARGOYLE CAN BE A DECORATIVE MOUNT, OR BE CUSTOMIZED INTO A SPOUT.

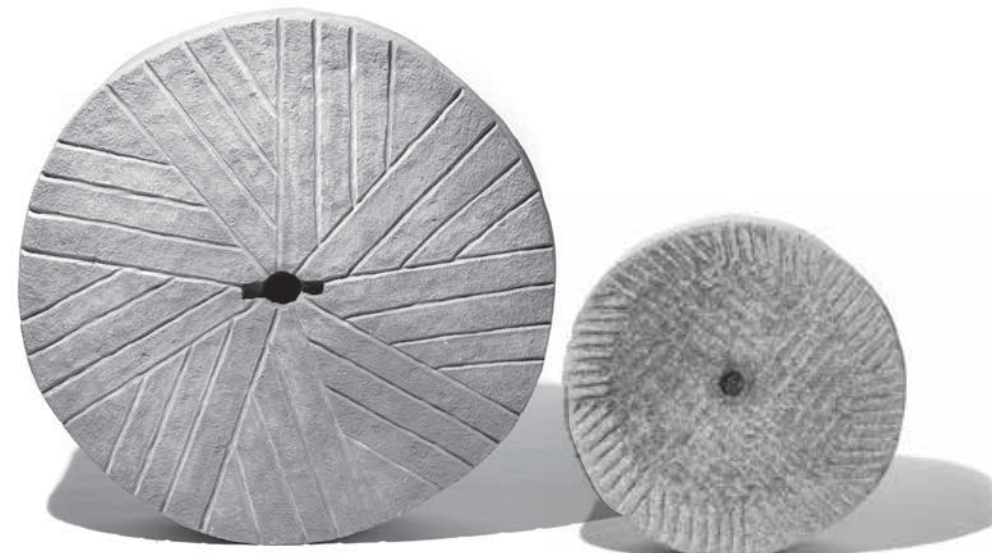
ITEM# 639      10"H X 27"W

**MILLSTONES**

WE'VE CAST TWO MILLSTONE GRINDING WHEELS FOR GARDEN WALLS, STEPS AND FOUNTAINS; USE WITH OUR ALPINE TROUGH TO CAPTURE WATER FROM A CUSTOM-INSTALLED SPOUT [AVAILABLE UPON REQUEST].

ITEM# 612S      22"H X 22"W X 3.5"D

ITEM# 612L      39"H X 39"W X 9.75"D

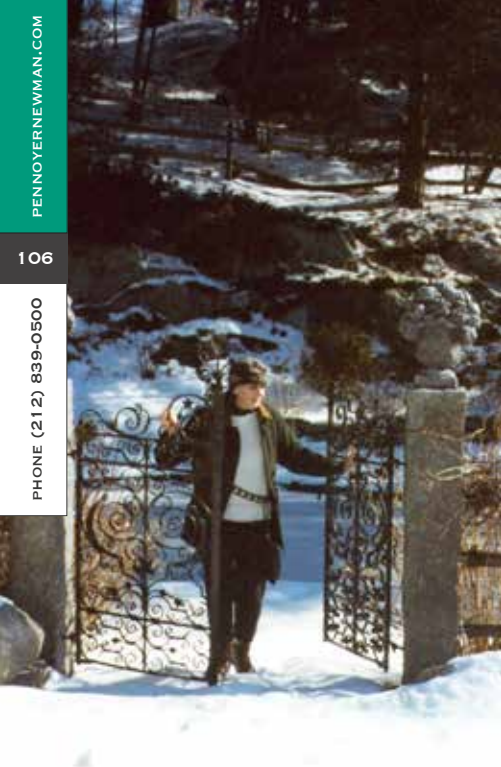
**BUDDHA HEAD STATUE**

A LUCKY LITTLE BUDDHA TO MAKE YOUR FLOWERS BLOOM.

ITEM# 026      19"H X 12"W X 6"D







▼ **DECORATIVE GRANITE POST**  
 REQUEST REBAR FOR GROUND INSTALLATIONS.  
 ITEM# 547      56”H X 8”W X 8”D



▲  
**GARDEN MARKER**  
 ITEM# 528      38”H X 10”W X 10”D

▲  
**OBELISK PILLAR**  
 ITEM# 697      18”H X 9”W



▲  
**STRAIGHT TOP BENCH**  
 A NATURAL IN ANY GARDEN, THIS RESIN BENCH SO CLOSELY RESEMBLES ITS GRANITE ORIGINAL THAT YOUR FRIENDS WILL NEED TO LIFT IT TO BELIEVE IT. REFLECT ON THE GARDEN OF YOUR DREAMS WHILE SEATED ON THIS BENCH.  
 ITEM# 549      18”H X 48”W X 12”D



▲  
**NATURAL EDGE BENCH**  
 TRUE TO THE SHAPE OF A NATURAL STONE’S EDGE, THIS STRAIGHT TOP RESIN GRANITE BENCH WILL BE ADMIRER IN YOUR GARDEN FOR YEARS TO COME. LIGHT WEIGHT AND SHIPS IN THREE PARTS. PVC PIPE INSERTIONS MAKE ASSEMBLY EASY UPON RECEIPT.  
 ITEM# 548      21”H X 48”W X 12”D



▲  
**CURVED BENCH**  
 KIDNEY BEAN SHAPED AND SUPPORTED WITH STONE-LOOKING LEGS, THIS RESIN BENCH IS SO WELL CRAFTED IT COULD DECEIVE THE MOST HARD-CORE COLLECTOR OF ALL-THINGS-GRANITE. SHIPS IN THREE PARTS. PVC PIPE INSERTIONS MAKE ASSEMBLY EASY UPON RECEIPT.  
 ITEM# 550      19”H X 51”W X 21”D



#### MODERN STONE SEATS I & II

THE ORGANIC AND NATURAL SHAPE OF THESE STONES WILL BECOME YOUR FAVORITE SEATS IN THE GARDEN. ENJOY YEAR-ROUND. SHOWN HERE IN WHITE; AVAILABLE IN ALL COLORS OFFERED.

ITEM# 646S    SMALL    14"H X 24"W X 14"D

ITEM# 646L    LARGE    15"H X 28"W X 15"D



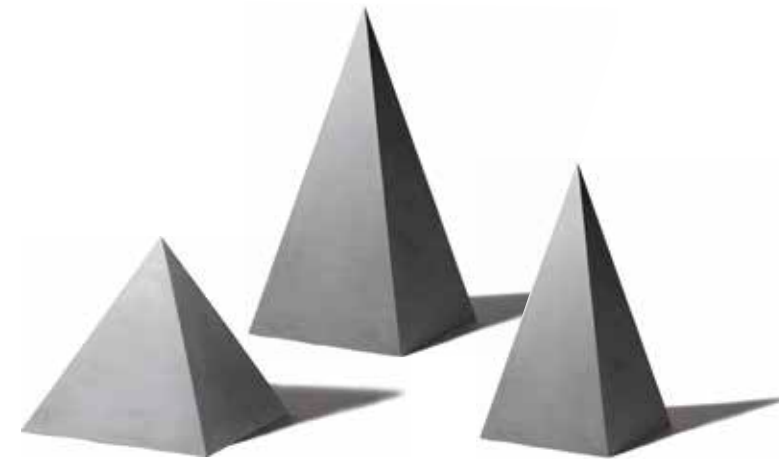
#### NIEVERA WILLIAMS MODERN PLANTER FORMS

DEVOTEE TO CONTEMPORARY FORMS FOR THE OUTDOORS, KEITH WILLIAMS, OF NIEVERA WILLIAMS, DESIGNED THESE TWO ICONIC PLANTERS TO BRING AN EXPRESSION OF MODERN STYLE TO ANY GARDEN OR HOME. SHOWN HERE IN WHITE; AVAILABLE IN ALL COLORS OFFERED.

ITEM# 656S    18.5"H X 24"W [PLANTING DEPTH: 13"D]

ITEM# 656L    16"H X 36"W [PLANTING DEPTH: 12"D]





#### GARDEN PYRAMIDS

USE THESE PYRAMID-SHAPES TO LANDMARK GARDEN ENTRANCES OR COURTYARDS.

ITEM# 725	SMALL	24"H X 24"W X 24"D
ITEM# 726	LARGE	48"H X 24"W X 24"D
ITEM# 727B	TALL	72"H X 26"W X 26"D



#### GARDEN SPHERES

ITEM# 410XXXS	XXX SMALL SPHERE	8"D	<b>NEW</b>
ITEM# 410XXS	XX SMALL SPHERE	10"D	<b>NEW</b>
ITEM# 410XS	X SMALL SPHERE	12"D	
ITEM# 410S	SMALL SPHERE	18"D	
ITEM# 410M	MEDIUM SPHERE	24"D	
ITEM# 410L	LARGE SPHERE	30"D	



**GARDENER'S FRAME**

ADD YOUR OWN MIRROR TO THIS FRAME TO CREATE THE ILLUSION OF A LARGER GARDEN SPACE.

ITEM# 469 30" ROUND X 2"D  
INSIDE DIMENSION: 19"

**MORGAN RECTANGULAR FRAME**

THIS ORNATE PICTURE FRAME HAS A TIMELESS AESTHETIC.

ITEM# 479 51"H X 39"W X 2.5"D



Dear Friends,

This year's catalog marks our continued commitment to expand our collection of estate originals, while at the same time offering sizes that work well in new and old settings alike. Many of our original planters, made of lead, are carefully cast in our proprietary mix of marble, rock and resin and are created from the originals from some of the foremost estates in North America and abroad. Many have been replicated from our company's founder's family, J.P. Morgan, as well of those of his dear friends and neighbors including Clay Frick, Daniel Guggenheim, John Shaffer Phipps, William Robertson Coe, and others whose planters have graced the lawns of their properties.

Combining history with craftsmanship is our top priority. As historic preservationists, our additional mission is to protect estate planters that would become extinct if we didn't work to protect and preserve the legacy of some of the oldest and most distinguished objects of past centuries.

With the arrival of spring, we have also expanded the classical tenants of our brand to include new objects that gardeners can use to change sight lines and vistas in garden spaces—from elegant finials for pillars, plaques and millstones for garden walls, markers and stones for pathways and driveways, spheres for fields, as well as our newly cast and spectacular stags that provide historical reverence to any home.

While we have many new items underway and are launching new items throughout the year, we are continuously converting planters into fountains—something we can offer for nearly every item featured in this catalog.

We are so grateful to you, our customers, who make it all worthwhile.

Have a wonderful and happy year of gardening ahead!

Sincerely,

Dinny Pennoyer Nadai & Virginia Newman Yocum

On-line orders ship in our signature Lead Grey color. Upon request, the standard color options [shown below] are available. Custom colors also available for an additional fee.

**MODERN FRAME**

THIS CLEAN-LINED FRAME IS PERFECT IN BOTH CLASSIC AND CONTEMPORARY SETTINGS.

ITEM# 552 40.75"H X 26.5"W X 2"D

**COLONIAL FRAME**

THIS FRAME IS FROM AN 1800'S COLONIAL FARMHOUSE IN ESSEX, MA.

ITEM# 480 52"H X 29"W X 2"D



Backcover Features:  
Item# 804 - Stag, Right Facing  
55"h x 43"w x 10"d  
Item#805 - Stag, Left Facing  
58"h x 43"w x 10"d





TO ORDER [PENNOYERNEWMAN.COM](https://PENNOYERNEWMAN.COM) OR CALL 212/839-0500