

PENNOYER  **NEWMAN**
DISTINCTIVE GARDEN POTS CAST FROM ESTATE ORIGINALS



HALF GRAPEFRUIT SHAPED BOWL

ADD SYMMETRY AND SOPHISTICATED SIMPLICITY TO THE FOCAL POINTS OF ANY OUTDOOR SPACE. [SHOWN AT LEFT IN DARK GREY; SHOWN ABOVE IN LEAD GREY.]

ITEM# 109S	SMALL	11.5" H X 25" W
ITEM# 109M	MEDIUM	14" H X 30" W
ITEM# 109	LARGE	17" H X 34.5" W



MODERN RECTANGULAR PLANTER

EXTEND THE LINES OF YOUR GARDEN BY COMBINING OUR MODERN RECTANGULAR PLANTER WITH THE MODERN CORNER PLANTER [PAGE 6] TO CREATE SOPHISTICATED RAISED BORDERS FOR YOUR ROOFTOP, TERRACE OR GARDEN. AVAILABLE IN CUSTOM SIZES. [SHOWN AT RIGHT IN DARK GREY; SHOWN ABOVE IN LEAD GREY.]

ITEM# 447	RECTANGULAR	24" H X 48" W X 14" D
-----------	-------------	-----------------------





**TALL MODERN SQUARE PLANTERS
WITH SQUARE BASE OR CURVE BASE**

CHOOSE FROM THE CLEAN LINES OF THE SQUARE BASE TO CREATE FORMAL LINES OR THE CURVE CONTOURED BASE TO CREATE INFORMAL LINES IN YOUR GARDEN SPACE. AVAILABLE IN CUSTOM SIZES.

ITEM# 655SS	SMALL - SQUARE BASE	27"H X 17"W X 17"D
ITEM# 655LS	LARGE - SQUARE BASE	36"H X 22"W X 22"D
ITEM# 655	TALL - SQUARE BASE	48"H X 24"W X 24"D
ITEM# 654S	SMALL - CURVE BASE	27"H X 17"W X 17"D
ITEM# 654L	LARGE - CURVE BASE	36"H X 22"W X 22"D



MODERN BOWL

ITEM# 450	SMALL MODERN BOWL	8.5"H X 21"W
ITEM# 450L	LARGE MODERN BOWL	9.5"H X 29"W



MODERN WINDOW BOX

ITEM# 451S	SMALL	8"H X 24"W X 9"D
ITEM# 451M	MEDIUM	8"H X 36"W X 9"D
ITEM# 451L	LARGE	8"H X 48"W X 9"D



MODERN SQUARE PLANTER

FROM OUR MODERN COLLECTION, THIS CLEAN AND CRISP SQUARE PLANTER IS ALSO AVAILABLE IN CUSTOM SIZES.

ITEM# 500	EXTRA SMALL	20"H X 20"W X 20"D
ITEM# 210	SMALL	24"H X 24"W X 24"D
ITEM# 211	MEDIUM	28"H X 28"W X 28"D
ITEM# 212	LARGE	30"H X 30"W X 30"D
ITEM# 592	X-LARGE	36"H X 36"W X 36"D
ITEM# 400	W/WHEELS	30"H [PLUS 2"H WHEELS] X 30"W X 30"D



KNOT GARDEN PLANTERS

KNOT GARDENS, SIMILAR TO THE ONE SEEN BELOW RIGHT, WERE FIRST ESTABLISHED IN ENGLAND IN THE REIGN OF QUEEN ELIZABETH I, AND WERE THE INSPIRATION TO OUR KNOT GARDEN PLANTER SERIES. THESE PLANTERS BRING THE IN-GROUND VERSION ABOVE GROUND.

A ITEM# 677A CORNER 9"H X 36"W [LONG AXIS] X 17.75"W [SHORT AXIS] X 18" [CORNER RADIUS]

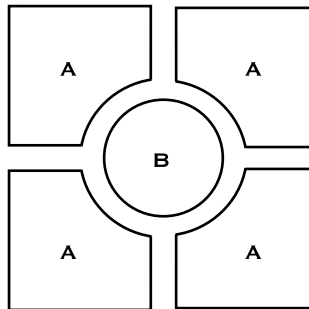
B ITEM# 677B ROUND 9"H X 36"W



MODERN CORNER PLANTER

COMBINE WITH OUR MODERN RECTANGULAR PLANTERS [PAGE 3] TO CREATE A SOPHISTICATED RAISED BED BORDER FOR YOUR ROOFTOP, TERRACE OR GARDEN SPACE.

ITEM# 454 CORNER 24"H X 48"L X 48"L X 14"D

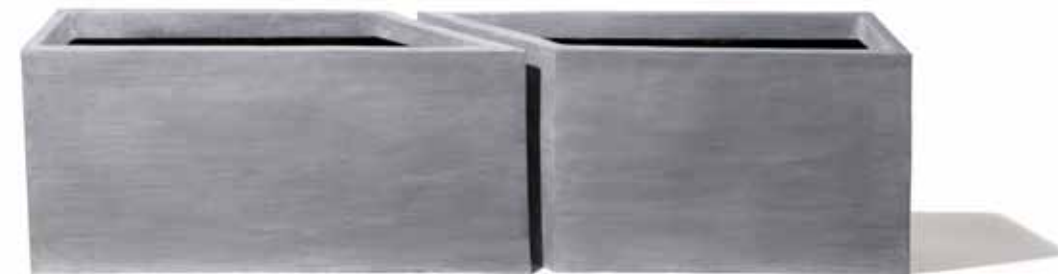
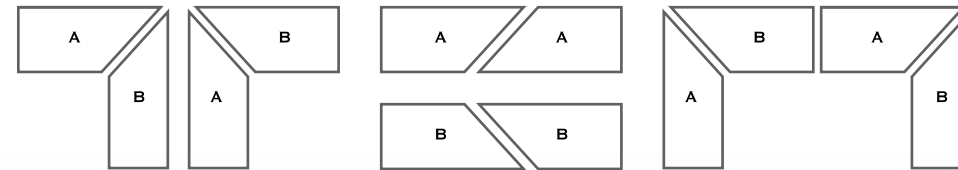


THE PARTERRE TOWER COLLECTION USE THESE RAISED BED PLANTERS AT GROUND LEVEL FOR VEGETABLE OR PERENNIAL GARDEN BEDS, OR CREATE A STACKED TOWER TO BRING HEIGHT TO THE CENTRAL AREA OF YOUR GARDEN. UPON REQUEST, PLANTER TOWER CAN BE CUSTOMIZED AND CONVERTED INTO A WATER FEATURE.

ITEM# 652S 9"H X 24"W X 24"D

ITEM# 652M 9"H X 36"W X 36"D

ITEM# 652L 9"H X 48"W X 48"D



MODERN PLANTERS IN TRAPEZOIDAL SHAPES

ANY ROOFTOP SPACE CAN BE MADE MORE USABLE WITH THE ADVANTAGE OF THESE TRAPEZOIDAL SHAPES. STEP AND REPEAT THESE PATTERNS TO CREATE CORNERS, BORDERS, WALKWAYS AND MORE. [TWO TRAPEZOIDAL B SHAPES SHOWN ABOVE.]

ITEM# 555A TRAPEZOIDAL A SHAPE 24"H X 48"W [BACK] X 34"W [FRONT] X 14"D

ITEM# 555B TRAPEZOIDAL B SHAPE 24"H X 34"W [BACK] X 48"W [FRONT] X 14"D



TALL ZINC-CAST SQUARE

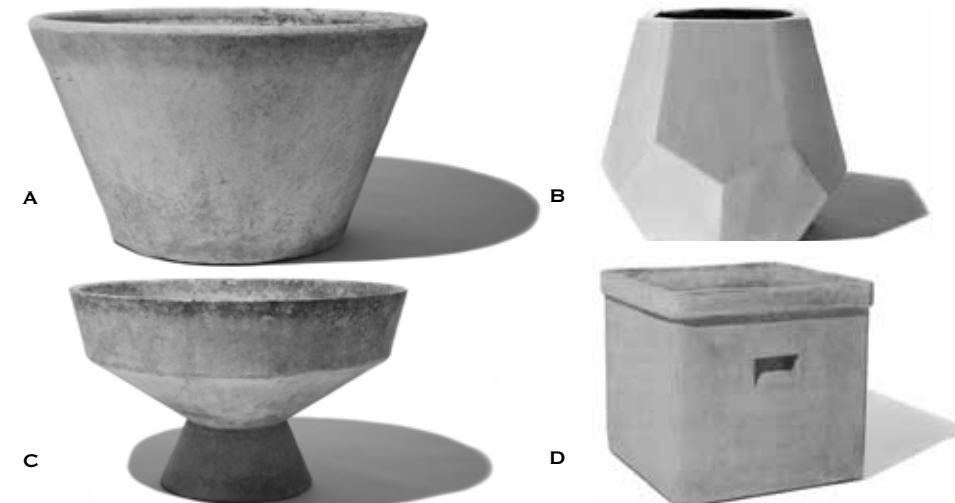
WHEN CLEAN STYLISTIC FORMS ARE NEEDED MOST, THIS PLANTER, CAST FROM A TRADITIONAL ZINC ORIGINAL, IS THE ANSWER. SYMMETRICAL AND SIMPLE – THE TALL SQUARE WILL PARTNER WELL WITH OUR LION PLANTER [PAGE 50].
ITEM# 588 26”H X 25.5”W X 25.5”D [20” SQUARE AT BASE]



TALL ZINC-CAST RECTANGLE

FOR A HARD-TO-FIT RECTANGULAR SPACE, THIS REPLICA OF A ZINC RECTANGLE PLANTER, LIKE THE TALL ZINC-CAST SQUARE, ALSO SITS WELL WITH THE DESIGN OF OUR LION PLANTER [PAGE 50]. SIMPLE IS INDEED ALWAYS ELEGANT.
ITEM# 588RT 26”H X 37.5”W X 18”D [BASE 12”D]

THE INDUSTRIAL PLANTER COLLECTION



A ITEM# 680

INDUSTRIAL BOWL

B ITEM# 653

PRISM PLANTER

C ITEM# 679

INDUSTRIAL URN

D ITEM# 597

SQUARE CONTEMPORARY PLANTER WITH INSET HANDLES

22”H X 38.5”W [23”W AT BASE]

18”H X 20”W [SURFACE PANELS 10”]

25.5”H X 29”W [13.5”W AT BASE;
PLANTING DEPTH: 25”]

17.25”H X 16”W X 16”D





HANDKERCHIEF PLANTER SERIES

THESE INCREDIBLE PLANTER FORMS HAVE BEEN RESTORED AND RECAST IN RESIN TO WITHSTAND USE IN WINTER CLIMATES. AVAILABLE IN THREE SIZES.

ITEM# 647S SMALL 10"H X 25"W

ITEM# 647M MEDIUM 11"H X 28"W

ITEM# 647L LARGE 16"H X 44"W



INDUSTRIAL PLANTER

FOR TRUE CURATORS OF MODERN STYLE, THIS TIMELESS 20TH CENTURY AMERICAN INDUSTRIAL FORM WAS MADE OF SOLID STEEL AND CAST TO CREATE THIS SMARTLY STYLED PLANTER.

ITEM# 651 27.5"H X 24"W [AT TOP] / 30"W [AT BASE]



CLASSIC PLANTER COLLECTION

THE SIMPLE RECESSED MOLDING MADE OUR ORIGINAL SQUARE PLANTERS FAVORITES AMONGST GARDENERS. AS A RESULT, WE NOW OFFER ROUND AND RECTANGULAR SIZES. THIS PLANTER SERIES IS PERFECT FOR ALL TYPES OF GARDENS. ASK ABOUT RISER OPTIONS.

ITEM# 595	RECTANGULAR	18" H X 48"W X 18"D
ITEM# 458S	SQUARE, SMALL	18"H X 18"W X 18"D [RISERS INCLUDED ON THIS SIZE ONLY]
ITEM# 458M	SQUARE, MEDIUM	24"H X 24"W X 24"D
ITEM# 593	ROUND	18"H X 18.5"W

**CONTEMPORARY PLANTERS WITH INSET HANDLES**

THE ORIGINAL PLANTERS, KNOWN AS THE WATTS POTS, WERE CRACKED FROM AGE, REPAIRED AND THEN RECAST.

ITEM# 409XXXS	XXX-SMALL	8"H X 13"W [9" AT BASE]
ITEM# 409XXS	XX-SMALL	12"H X 14"W [9" AT BASE]
ITEM# 409XS	X-SMALL	16"H X 19"W [12" AT BASE]
ITEM# 409S	SMALL	18"H X 24"W [15" AT BASE]
ITEM# 409M	MEDIUM	24"H X 28"W [18" AT BASE]
ITEM# 409L	LARGE	29"H X 34"W [22" AT BASE]





ICON PLANTERS

THIS SQUARE PLANTER HAS AN ICONIC MARK ON ALL FOUR SIDES. CHOOSE FROM OVAL, FLEUR-DE-LYS, LAUREL LEAVES, CIRCLE, AND GOTHIC ICON. SAME ICON ON ALL SIDES; 22.25"H X 19.5"W X 19.5"D.

ITEM# 406 OVAL ICON

ITEM# 408 CIRCLE ICON

ITEM# 405 FLEUR-DE-LYS ICON

ITEM# 455 GOTHIC ICON

ITEM# 407 LAUREL LEAVES ICON



THE PANELED PLANTER COLLECTION



OUR POPULAR PANELED PLANTER SERIES HAS BEEN EXPANDED TO INCLUDE THE MOST USEFUL SIZES FOR ANY GARDEN.

A	ITEM# 589S	SMALL ROUND	18"H X 19"W
	ITEM# 589M	MEDIUM ROUND	24"H X 25"W
	ITEM# 589L	LARGE ROUND	30"H X 31"W
B	ITEM# 452	PANELED WINDOW BOX	10"H X 36"W X 12"D
C	ITEM# 032	PANELED SQUARE	22.25"H X 19.5"W X 19.5"D
	ITEM# 041	PANELED SQUARE, LARGE	29"H X 25.75"W X 25.75"D
D	ITEM# 456	PANELED RECTANGULAR	24"H X 48"W X 16"D

THE WEST SUSSEX PLANTER COLLECTION



INFLUENCED BY THE GROUNDS OF ARUNDEL CASTLE AND GARDENS IN WEST SUSSEX, ENGLAND, THE CIRCULAR MOTIF REFLECTS THE GOTHIC REVIVAL STYLE CONSIDERED TO BE ONE OF THE GREAT WORKS OF VICTORIAN ENGLAND.

ITEM# 800S	SMALL ROUND	18"H X 19"W
ITEM# 800M	MEDIUM ROUND	24"H X 25"W
ITEM# 800L	LARGE ROUND	30"H X 31"W
ITEM# 801	PANELED RECTANGULAR	24"H X 48"W X 16"D
ITEM# 802	SQUARE	22.25"H X 19.5"W X 19.5"D

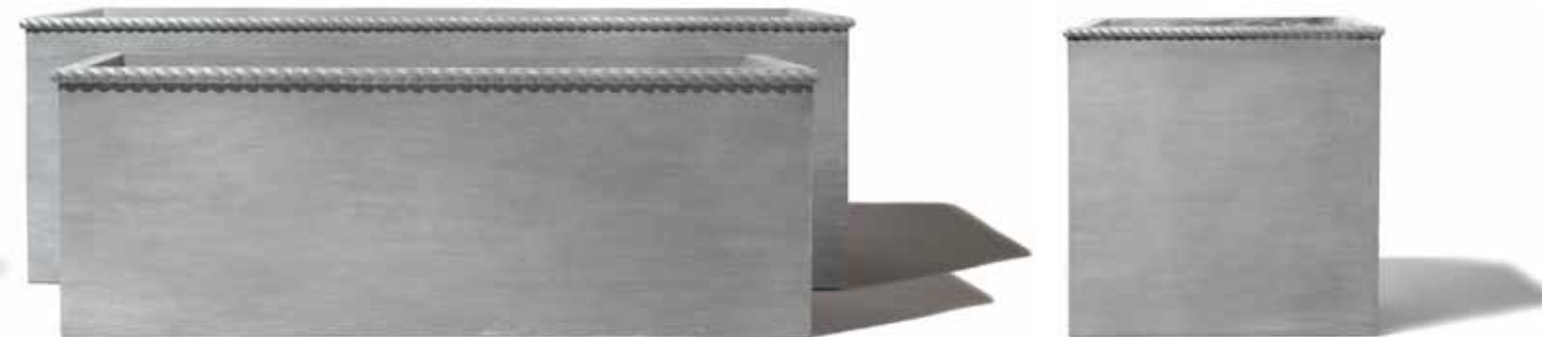


ROPE EDGED CYLINDER SHAPED PLANTERS

THE DECORATIVE ROPE EDGE OF THESE PLANTERS WAS SO POPULAR WE'VE ADDED NEW SHAPES AND SIZES TO COINCIDE WITH THE COLLECTION. CUSTOM SIZES AVAILABLE UPON REQUEST.

ITEM# 598XS	CYLINDER X-SMALL	12"H X 11"W
ITEM# 598S	CYLINDER SMALL	16"H X 18.5"W
ITEM# 598L	CYLINDER LARGE	16"H X 21.5"W
ITEM# 598T	CYLINDER TALL	32"H X 23"W [15"W AT BASE]

THE ROPE EDGED COLLECTION



ROPE EDGED RECTANGULAR & SQUARE PLANTERS

WHY "KNOT" TIE IT ALL TOGETHER WITH OUR EXTENDED COLLECTION OF ROPE EDGED PLANTERS. THESE PLANTERS WERE INSPIRED FROM THE MOST SIMPLISTIC AESTHETIC THAT ORIGINATED FROM THE DECORATIVE MOLDING OF OUR ITALIAN FLORENTINE COLLECTION. CUSTOM SIZES ALSO AVAILABLE UPON REQUEST.

ITEM# 677RS	RECTANGULAR SMALL	18.25"H X 48.5"W X 18"D
ITEM# 677RL	RECTANGULAR LARGE	24"H X 72"W X 24"D
ITEM# 677SQXS	SQUARE X-SMALL	16"H X 16"W X 16"D
ITEM# 677SQS	SQUARE SMALL	20"H X 20"W X 20"D
ITEM# 677SQM	SQUARE MEDIUM	24"H X 24"W X 24"D
ITEM# 677SQ	SQUARE LARGE	30"H X 30"W X 30"D



AS SEEN IN NEW YORK SPACES MAGAZINE

**MODERN SHAPED BOWLS**

THESE BOWLS WERE RECREATED FROM ENGLISH CAST STONE VESSELS AND MAKE WONDERFUL GROUPINGS ON TERRACES, PATIOS AND GARDEN TABLETOPS.

ITEM# 472S	SMALL	9.5"H X 18"W	[12" BASE]
ITEM# 472M	MEDIUM	11"H X 21"W	[13.5" BASE]
ITEM# 472L	LARGE	12"H X 24"W	[16" BASE]

**ROLLED RIM VASES**

THIS PLANTER SERIES HAS A SUBTLY CURVED RIM TOP WITH A SIMPLE AND CLEAN LINED SILHOUETTE THAT WILL HOLD COURT IN BOTH MODERN AND TRADITIONAL GARDEN SETTINGS.

ITEM# 688S	SMALL	16"H X 16.25"W	[9.5"W ROUND BASE]
ITEM# 688M	MEDIUM	20"H X 20"W	[14"W ROUND BASE]
ITEM# 688T	TALL	32"H X 23"W	[15"W ROUND BASE]



LERIO, ROLL RIM, AND BASIC SQUARE PLANTERS

THESE BEAUTIFUL, DURABLE LERIO, ROLL RIM AND BASIC SQUARE PLANTERS HAVE A ROUGH, STONE-LIKE FINISH THAT SETS THEM APART FROM OUR STANDARD FINISHES.

LERIO PLANTER

ITEM# 051S	20"H X 22"W
ITEM# 051M	21"H X 24"W
ITEM# 051L	26"H X 27"W
ITEM# 051XL	36"H X 42"W

ROLL RIM SQUAT PLANTER

ITEM# 301	8"H X 20"W
-----------	------------

BASIC SQUARE PLANTER

ITEM# 052S	20"H X 20"W X 20"D
ITEM# 052M	24"H X 25"W X 25"D
ITEM# 052L	30"H X 30"W X 30"D

ASK ABOUT OTHER SIZES AND SURFACES.



MODERN STRAIGHT CYLINDER PLANTER
STRAIGHT WALLS FOR THE MOST MODERN PRESENTATION.

ITEM# 596 18"H X 18.5"W



CYLINDERS AND SQUARE VASES

THESE MINIMALIST GARDEN PLANTERS ADD A TOUCH OF CLEAN-CUT FORMALITY WHEREVER THEY ARE PLACED.

ITEM# 412	TALL CYLINDER	32"H X 21"W	[13" AT BASE]
ITEM# 412S	SHORT CYLINDER	15"H X 21"W	[14" AT BASE]
ITEM# 411S	SMALL SQUARE VASE	28"H X 20"W	[16" AT BASE]
ITEM# 411M	MEDIUM SQUARE VASE	32"H X 24"W	[20" AT BASE]
ITEM# 411L	LARGE SQUARE VASE	39.5"H X 18"W	[13" AT BASE]



GREENWICH PLANTERS

THESE PLANTERS TAKE ROOFTOP GARDENING TO THE NEXT LEVEL. THIS SOPHISTICATED DESIGN BY AARON MCINTIRE, OF ARBOR & FOLLY, IS OFFERED IN THREE SIZES AND CAN ELEVATE PLANTING HEIGHTS ACROSS TERRACES AND DECKS IN URBAN AND COUNTRY LANDSCAPES.

- ITEM# 728 SQUARE, SMALL 34”H X 24”W X 24”D
- ITEM# 729 SQUARE, LARGE 34”H X 30”W X 30”D
- ITEM# 730 RECTANGULAR 29.5”H X 56”W X 24”D



BASIC WINDOW BOX

THIS SIMPLE YET ELEGANT WINDOW BOX SHOWCASES THE SKILLS OF ANY CONTAINER GARDENER. OPTIONAL MONOGRAMS OR ICONS, AS SHOWN BELOW AND AT RIGHT, CUSTOMIZE PLANTERS FOR YOUR HOME AND GARDEN. PRICING AVAILABLE UPON REQUEST.

- ITEM# 053S SMALL 8”H X 24”W X 9”D
- ITEM# 053M MEDIUM 8”H X 36”W X 9”D
- ITEM# 053L LARGE 8”H X 48”W X 9”D





BEEHIVE POTS

A	ITEM# 474S	SMALL	26" H X 20" W
B	ITEM# 474L	LARGE	36" H X 30" W
C	ITEM# 420S		38" H X 22" W
	ITEM# 420M		48" H X 22" W
	ITEM# 420L		58" H X 22" W
	ITEM# 420XL		68" H X 22" W



MORGAN NILE RIVER VESSELS

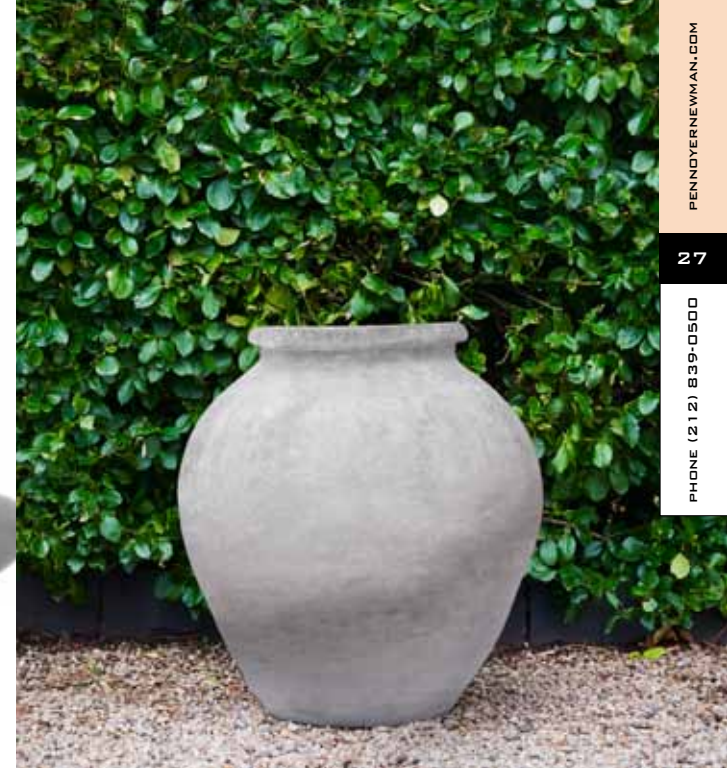
A	ITEM# 580A	21.5" H X 21.5" W [6" AT BASE / 11" OPENING]
B	ITEM# 580B	23" H X 24" W [8" AT BASE / 11.5" OPENING]



JP MORGAN AMPHORA POT

THIS VESSEL, ORIGINALLY COLLECTED BY JP MORGAN, WAS AN ANCIENT EGYPTIAN STORAGE JAR THAT HAS BEEN CAREFULLY RESTORED TO EXTEND ITS LIFE FOR GENERATIONS TO COME.

ITEM# 687 31" H X 26" W





MODERN STONE SEATS I & II

THE ORGANIC AND NATURAL SHAPE OF THESE STONES WILL BECOME YOUR FAVORITE SEATS IN THE GARDEN. ENJOY YEAR-ROUND. SHOWN HERE IN WHITE; AVAILABLE IN ALL COLORS OFFERED.

ITEM# 646S SMALL 14"H X 24"W X 14"D

ITEM# 646L LARGE 15"H X 28"W X 15"D



NIEVERA WILLIAMS MODERN PLANTER FORMS

DEVOTEE TO CONTEMPORARY FORMS FOR THE OUTDOORS, KEITH WILLIAMS, OF NIEVERA WILLIAMS, DESIGNED THESE TWO ICONIC PLANTERS TO BRING AN EXPRESSION OF MODERN STYLE TO ANY GARDEN OR HOME. SHOWN HERE IN WHITE; AVAILABLE IN ALL COLORS OFFERED.

ITEM# 656S 18.5"H X 24"W [PLANTING DEPTH: 13"D]

ITEM# 656L 16"H X 36"W [PLANTING DEPTH: 12"D]



GARDEN SPHERES

ITEM# 410XS	EXTRA SMALL SPHERE	12"D
ITEM# 410S	SMALL SPHERE	18"D
ITEM# 410M	MEDIUM SPHERE	24"D
ITEM# 410L	LARGE SPHERE	30"D



GARDEN PYRAMIDS

USE THESE PYRAMID-SHAPES TO LANDMARK GARDEN ENTRANCES OR COURTYARDS.

ITEM# 725	SMALL	24"H X 24"W X 24"D
ITEM# 726	LARGE	48"H X 24"W X 24"D
ITEM# 727B	TALL	72"H X 26"W X 26"D

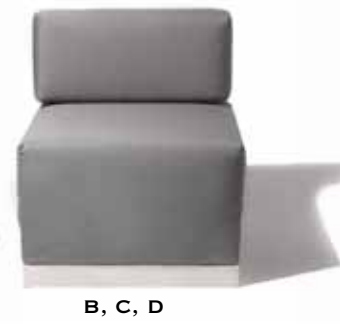


MODERN OUTDOOR SEATING

THESE RESIN OUTDOOR FURNITURE SECTIONS CAN BE USED TOGETHER OR APART TO CREATE A MODERN OUTDOOR SPACE ENHANCEMENT. THE CORNER SEAT CAN BE USED AS LEFT OR RIGHT ARM FACINGS AS WELL AS A CORNER PIECE TO CREATE CUSTOM SOFA, LOVESEAT AND SECTIONAL ARRANGEMENTS, ALLOWING FOR COMFORTABLE SEATING FOR A MULTITUDE OF GUESTS. WEATHER-RESISTANT CUSHIONS MADE OF SUNBRELLA® FABRIC IN CHARCOAL GREY.



A, C, D



B, C, D



A, C, D



E, F, G

A	ITEM# 540	CORNER CHAIR SECTION [APPLIES LEFT OR RIGHT]	31"H X 31"W X 31"D
B	ITEM# 542	ARMLESS CHAIR SECTION [CENTER]	31"H X 28"W X 31"D
C	ITEM# 540A	CORNER AND ARMLESS CHAIR SEAT CUSHION	16"H X 28"W X 28"D
D	ITEM# 540B	BACK REST CUSHION	13"H X 28"W X 6"D
E	ITEM# 538	MODERN OUTDOOR CHAIR	31"H X 28.5"W X 31"D
F	ITEM# 538A	MODERN CHAIR SEAT CUSHION	16"H X 22.5"W X 28"D
G	ITEM# 538B	MODERN CHAIR BACK REST CUSHION	13"H X 22.5"W X 6.5"D



RUBY BEETS MODERN TABLE AND BENCH

WE MADE THE FIRST CASTING OF THIS ELEGANT AND CLEAN-LINED TABLE FOR RUBY BEETS ANTIQUE STORE. ADD THIS AS A BOLD AND BEAUTIFUL ARCHITECTURAL ELEMENT TO AN OUTDOOR ROOM. MODERN BENCH SEATING IS ALSO AVAILABLE AND MADE TO MATCH.

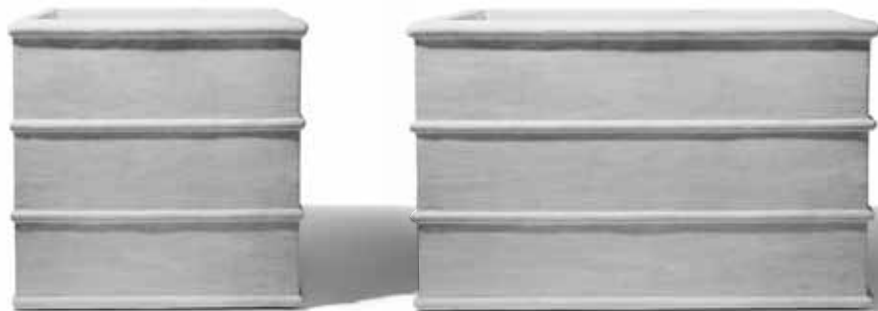
ITEM# 536	MODERN TABLE	30"H X 76.75"W X 35"D
ITEM# 537	MODERN BENCH	18"H X 63"W X 16"D





RECTANGULAR SMOOTH-EDGED WINDOW BOX
THIS SMOOTH-EDGED WINDOW BOX CORRESPONDS WITH OUR FLORENTINE COLLECTION AND OUR CUSTOM RECTANGULAR SMOOTH-EDGED PLANTER [PAGES 44-45].

ITEM# 599 12"H X 41"W X 13.75"D



CONICAL STRAPPED SQUARE & RECTANGULAR PLANTERS

TAKING AN OLD WORLD STYLE INTO A NEW WORLD FORM IS EXACTLY WHAT WE'VE CREATED FROM OUR EXCLUSIVE CONICAL STRAPPED POTS, AS SHOWN AT RIGHT. THIS EXTENDED COLLECTION OF PLANTERS MAKES IT AN EVEN MORE IRRESISTIBLE STYLE IN ANY GARDEN DESIGN.

ITEM# 671SQ	SQUARE	25"H X 24"W X 24"D
ITEM# 671RS	RECTANGULAR, SMALL	25"H X 36"W X 16"D
ITEM# 671RL	RECTANGULAR, LARGE	25"H X 48"W X 18"D



CONICAL STRAPPED POTS

THIS POT WAS CAST FROM AN ENGLISH LEAD ORIGINAL. THE STRUCTURED FORM MAKES IT A WONDERFUL PLANTER TO REPEAT IN A STRAIGHT LINE ALONG A GARDEN WALKWAY, PLACE AT ENTRANCES, OR USE AS A STAND-ALONE BEAUTY.

ITEM# 404S	SMALL	20"H X 21"W [15" AT BASE]
ITEM# 404L	LARGE	25"H X 27"W [19" AT BASE]
ITEM# 404T	TALL	32"H X 23"W [15" AT BASE]

AS FEATURED IN
VANITY FAIR





HORTULUS FARM XL VESSEL
 THIS VESSEL WAS SOURCED THROUGH
 THE FOUNDERS OF HORTULUS FARM IN
 WRIGHTSTOWN [BUCK'S COUNTY], PA.
 ENJOY THIS HORTULUS FARM XL EGG CUP
 VESSEL IN YOUR GARDEN.
 ITEM# 583XL 23.5"H X 32"W



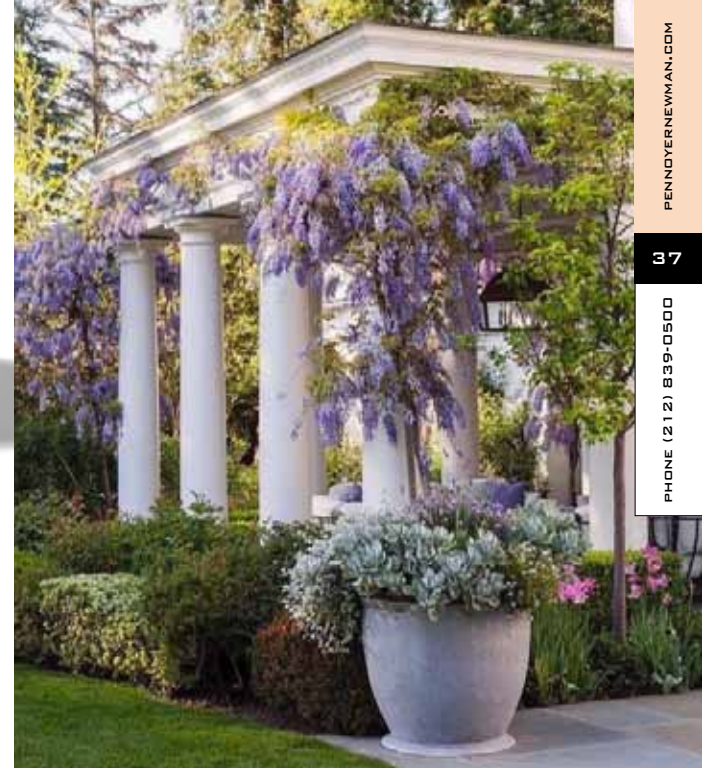
EGG CUP PLANTER
 USE AS A STAND-ALONE PLANTER OR
 PERSONALIZE WITH AN ICON.
 ITEM# 418S 18"H X 17"W [12" BASE]
 ITEM# 418M 24"H X 22"W [16" BASE]
 ITEM# 418L 30"H X 28"W [20" BASE]



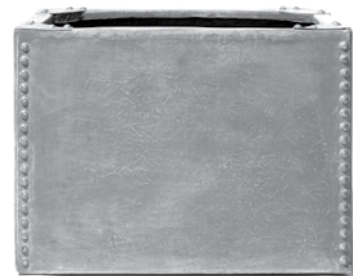
CONICAL STRAPPED EGG CUP PLANTER
 THIS SIMPLE FORM REFLECTS THE VERY BEST
 IN GARDEN DESIGN.
 ITEM# 556S 17"H X 15"W [12" BASE]
 ITEM# 556M 22"H X 20"W [16" BASE]
 ITEM# 556L 28"H X 26"W [20" BASE]



MODERN EGG CUP PLANTER
 A MODERN TWIST ON AN OLD
 CLASSIC.
 ITEM# 554S 17"H X 15"W [12" BASE]
 ITEM# 554M 22"H X 20"W [16" BASE]
 ITEM# 554L 28"H X 26"W [20" BASE]



THE RIVETED PLANTER COLLECTION



RIVETED RECTANGLE

A BEAUTIFUL AND HISTORICALLY SIGNIFICANT PLANTER. CUSTOM SIZES ALSO AVAILABLE.

ITEM# 566 18"H X 25"W X 18"D

RIVETED ROUND

A FORM THAT RESONATES WITH THE GLOBAL GARDENING SCENE.

ITEM# 564 13.5"H X 19"W

RIVETED ROUND WASHTUB WITH HANDLES

A MEDIUM SIZED RIVETED TUB. [HANDLES NOT WEIGHT-BEARING.]

ITEM# 660 18.5"H X 25"W

RIVETED ROUND BASIN

THIS LARGE BASIN IS PERFECT FOR PLANTING BEAUTIFUL ROUNDS OF FLOWERS OR UNTAMED GRASSES.

ITEM# 661 17"H X 45"W

LOW SQUAT PLANTER

THIS HANDSOME SQUAT PLANTER SITS LOW TO THE GROUND AND FITS EASILY ON A PILLAR OR CORNER POST.

ITEM# 419 12"H X 24"W

MODERN RIM PLANTERS

CLEAN AND ELEGANT.

ITEM# 461 18.5"H X 23"W

ITEM# 462 26.5"H X 30"W

ROLLED RIM PLANTERS

CLASSIC AND STYLISH.

ITEM# 120 17"H X 20"W

ITEM# 121 20"H X 24"W

ITEM# 122 25"H X 28"W

ITEM# 123 25"H X 32"W

ITEM# 124 28"H X 36"W

ITEM# 125 30"H X 42"W

ITEM# 648 10"H X 20"W

THE GRECIAN & ANTIGUA PLANTER COLLECTION



GRECIAN PLANTERS

A	ITEM# 620S	SMALL	13.5"H X 17.5"W
B	ITEM# 620M	MEDIUM	14"H X 17.5"W
C	ITEM# 620L	LARGE	28"H X 26"W
D	ITEM# 620XL	X LARGE	32"H X 30.5"W

ITEM# 617S
ITEM# 617L
ITEM# 617XL
ITEM# 618L
ITEM# 618XL

ANTIGUA PLANTERS

SMALL	13"H X 14"W
LARGE	13"H X 19"W
X-LARGE	18.5"H X 23"W
SAUCER, LARGE ANTIGUA	3"H X 15"W
SAUCER, X-LARGE ANTIGUA	3"H X 19"W



GRECIAN PLANTER EXTRA-LARGE



GRECIAN PLANTER LARGE



GRECIAN PLANTER MEDIUM



HORTULUS FARM XXL VESSEL

HORTULUS FARM, WHERE HISTORY AND HORTICULTURE MEET, IS WHERE THIS VESSEL WAS ORIGINALLY SOURCED THROUGH FOUNDERS JACK STAUB AND RENNY REYNOLDS. SURE TO MAKE AN INCREDIBLE IMPACT IN ANY GARDEN.
ITEM# 583XXL 40”H X 35”W



OVAL ROPE EDGED TABLETOP PLANTER

THIS ONE-OF-A-KIND LEAD ORIGINAL WAS RESTORED TO ENSURE THAT THIS BEAUTIFUL SILHOUETTE WILL EXIST NOW AND INTO THE FUTURE. ENJOY THIS PLANTER ON AN INDOOR OR OUTDOOR TABLETOP.
ITEM# 678 10”H X 34”W X 18”D
[TOP OPENING: 24”W]



ROPE EDGED TABLETOP

THIS ROPE EDGED TABLETOP WAS CAST TO CREATE A ZINC-LIKE REPLICA THAT CAN BE USED ON ANY TABLE BASE. SHOWN HERE ON OUR LION PLANTER [SEE PAGE 50].
ITEM# 516 1”H X 42”W

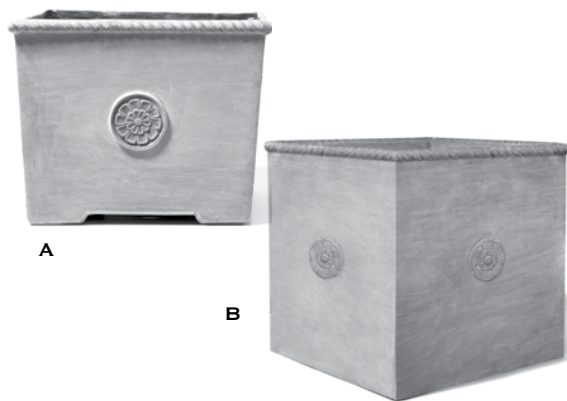


SPANISH RING POT

CAST FROM A HAND-CARVED STONE ORIGINAL, THIS REPLICA REFLECTS ITS FULL BEAUTY AND RICH DETAIL.
ITEM# 551 20”H X 26”W



THE FLORENTINE COLLECTION



A

B

PENNOYER NEWMAN PLANTERS
ON CRANE ESTATE, IPSWICH, MA.MAYNARD ROUND
ITEM# 012 12"H X 15"W

FLORENTINE PLANTERS
SQUARE ROPE EDGED PLANTERS WITH FLORENTINE EMBLEMS COME IN TWO STYLES: STYLE A TAPERS OUT FROM BASE WITH BUILT-IN RISERS; STYLE B IS AN ABSOLUTE SQUARE TO ACCOMMODATE ROOT BALL GROWTH. RISER OPTIONS AVAILABLE FOR STYLE B; CUSTOM SIZES AVAILABLE UPON REQUEST.

A	ITEM# 009	SMALL	17"H X 21"W X 21"D
A	ITEM# 010	MEDIUM	25"H X 28"W X 28"D
B	ITEM# 437	LARGE	30"H X 30"W X 30"D
B	ITEM# 011	X-LARGE	36"H X 36"W X 36"D

FLORENTINE RECTANGULAR SMOOTH EDGED PLANTER
ONE OF OUR BEST SELLING COLLECTION OF PLANTERS, THESE FLORENTINE RECTANGULARS NOW INCLUDE A WIDER DEPTH AND WORK WELL WITH MODERN AND TRADITIONAL ARCHITECTURE SETTINGS. ALSO AVAILABLE IN CUSTOM SIZES.

ITEM# 013	ORIGINAL	20"H X 48.5"W X 12"D
ITEM# 013B	NEW DEPTH	20"H X 48.5"W X 18"D

FLORENTINE RECTANGULAR SMOOTH EDGED PLANTER
AVAILABLE WITH OR WITHOUT ICON AS SHOWN ABOVE.



GARLAND PLANTER
 A CLASSIC ROUND PLANTER WITH SEA SHELL MOTIF AT ITS BASE.

ITEM# 115	16" H X 20" W
ITEM# 116	20" H X 24" W
ITEM# 129	20" H X 28" W



FRENCH FLORENTINE ROUND
 THE OLD FRENCH TERRA COTTA CLAY POT ORIGINAL WAS CRACKED IN HALF, AND REPAIRED AND CAST TO SAVE ITS SIMPLE AND ELEGANT DESIGN.

ITEM# 476	12" H X 13" W
-----------	---------------



▼ **FIVE FLOWER MEDALLION PLANTER WITH PEDESTAL BASE**
 THIS ROUND PEDESTAL HAS BEEN RECAST AS AN OPTIONAL BASE TO THE FIVE FLOWER MEDALLION PLANTER.

ITEM# 055 FIVE FLOWER MEDALLION PLANTER	17.5" H X 26.5" W
ITEM# 627 FIVE FLOWER MEDALLION PEDESTAL	5.5" H X 18" W



FLORENTINE HEXAGON PLANTER
 THE NEWPORT FLOWER SHOW RESULTED IN THIS FANTASTIC FIND. CAST FROM A CUSTOMER'S LEAD ORIGINAL THAT WAS SOURCED ON THEIR TRIP TO PARIS, WE CAST THIS BEAUTIFUL PLANTER TO EXTEND THE JOY TO YOU AND YOUR GARDEN, TOO.

ITEM# 680B 13" H X 18.5" W [11" W PANELS]



LATTICE AND BASKETWEAVE PLANTERS

ADD A TOUCH OF FRENCH FORMALITY TO YOUR GARDEN WITH THESE LATTICE AND BASKETWEAVE PLANTERS.



ITEM# 100	LATTICE URN WITHOUT TOP	18"H X 13.5"W
ITEM# 101	LATTICE URN WITH TOP	22"H X 13.5"W
ITEM# 102	LATTICE RECTANGULAR, SMALL	17"H X 36"W X 14"D
ITEM# 103	LATTICE RECTANGULAR, LARGE	21.5"H X 51"W X 22"D
ITEM# 107	LATTICE SQUARE PLANTER, SMALL	20"H X 17"W X 17"D
ITEM# 108	LATTICE SQUARE PLANTER, LARGE	26"H X 27"W X 27"D
ITEM# 104	BASKETWEAVE ROUND PLANTER, SMALL	12"H X 21.5"W
ITEM# 105	BASKETWEAVE ROUND PLANTER, MEDIUM	14"H X 18.5"W
ITEM# 106	BASKETWEAVE ROUND PLANTER, LARGE	16.5"H X 23"W
[LARGER ROUND BASKETWEAVE PLANTERS AVAILABLE UPON REQUEST.]		

THE ELIZABETHAN PLANTER COLLECTION



THESE GARDEN CONTAINERS ARE REFLECTIVE OF THE ELIZABETHAN PERIOD. USE THEM TO CREATE AN OUTDOOR ROOM OR TO MARK THE STRAIGHT LINE AREAS OF YOUR GARDEN.

A	ITEM# 439	ELIZABETHAN II	32"H X 30"W X 30"D
B	ITEM# 442	ELIZABETHAN I TROUGH	16"H X 60"W X 20"D
C	ITEM# 610	ELIZABETHAN ROUND I	18.5"H X 18"W
D	ITEM# 065	ELIZABETHAN I	16"H X 20"W X 20"D





LION'S HEAD ▶

THE ROYAL LION IS AVAILABLE AS A DECORATIVE WALL MOUNT OR AS A WATER-ENABLED SPOUT. 10"H X 10"W X 6"D
ITEM# 077 WITHOUT SPOUT
ITEM# 077S WITH SPOUT



LION WINDOW BOX
ITEM# 076 9"H X 38"W X 14"D



◀ **LION WITH SHIELD**

CAST FROM A J.P. MORGAN ORIGINAL, THIS LION WITH SHIELD STATUARY WAS REPLICATED FROM THE COLLECTION AT ROUND BUSH. ITEM# 572 35"H X 14.5"W X 16"D



LION PLANTER

CAST FROM A COE FAMILY LEAD ORIGINAL, THIS LION PLANTER WORKS WELL IN CLASSICAL OR CONTEMPORARY SETTINGS. ITEM# 118 26"H X 24"W [21"W AT BASE]



LION PLAQUE AND PLANTER

MADE FROM A FIREPLACE HEAT REFLECTOR PANEL, THIS ORNATE LION MAKES A WONDERFUL WALL PLAQUE OR PLANTER. ALSO CUSTOMIZABLE, THESE PANELS CAN BE JOINED TOGETHER TO CREATE RECTANGULAR SHAPES AS WELL.

ITEM# 557 LION PANEL PLAQUE 22"H X 18"W X 1"D

ITEM# 558 LION PANEL PLANTER 22"H X 18"W X 18"D



THE KING'S CROWN PLANTER

CAST FROM THE SINGLE SIDE OF A 1700'S FIREPLACE HEAT REFLECTOR, THIS SQUARE PLANTER IS ONE FOR ROYALTY EVERYWHERE AND CAN TRANSFORM ORDINARY GROUNDS INTO A GRAND GARDEN.

ITEM# 533 30"H X 38"W X 38"D

MORGAN DELLA ROBBIA PLANTER

CAST FROM AN ORIGINAL DELLA ROBBIA CERAMIC POT FORMERLY OWNED BY J.P. MORGAN. A PENNOYER NEWMAN EXCLUSIVE.

ITEM# 002 20"H X 25"W

CORNELIA GUEST PLANTER

CAST FROM CORNELIA GUEST'S GRANDMOTHER'S 200-YEAR-OLD CERAMIC ORIGINAL, THIS PLANTER WILL BE AS DISTINCTIVE AT YOUR HOME AS IT HAS BEEN AT THE ENTRY OF HER OLD WESTBURY ESTATE.

ITEM# 581 16.5"H X 21"W

GRAPE OPHELIA POT

CLASSIC GREEK GARDEN DESIGN HARMONIZES WELL ON THE DECK, TERRACE OR GARDEN'S EDGE.

ITEM# 008 21"H X 20"W

BAROQUE PLANTER

THIS PLANTER REFLECTS THE EXUBERANT STYLES OF 17TH CENTURY EUROPE.

ITEM# 126 24"H X 26"W

THE IRON GRID PLANTER COLLECTION



THE ICONIC STYLE OF THESE ORNATE IRON GRID PLANTERS REPRESENTS A FORM THAT DATES BACK TO THE TURN-OF-THE-CENTURY. THE ORIGINALS, WHICH WERE MADE OF LEAD, WERE FAVORED BY ARCHITECTS AND OFTEN USED IN GRAND BUILDINGS AND PUBLIC SPACES.

ITEM# 401XS

EXTRA SMALL

16"H X 16"W X 16"D

ITEM# 401S

SMALL

20"H X 20"W X 20"D

ITEM# 401M

MEDIUM

24"H X 24"W X 24"D

ITEM# 401L

LARGE

30"H X 30"W X 30"D

ITEM# 401XL

EXTRA LARGE

36"H X 36"W X 36"D



As seen at
THE WHITE HOUSE
WASHINGTON D.C.

PHOTO: OLIVIER DOULIERY / ABACAUSA.COM



THE MODERN FARMHOUSE COLLECTION

DUTCH RECTANGULAR PLANTER

WE DOUBLED THE WIDTH OF OUR SINGLE DUTCH PLANTER TO CREATE A RECTANGULAR SIZE FOR LARGER INSTALLATION POINTS.

ITEM# 577 28"H X 48"W X 24"D



DUTCH PLANTER

THIS PLANTER DESIGN WAS INSPIRED BY DOORS ON CARRIAGE HOUSES, BARN AND STABLES.

ITEM# 459 28"H X 24"W X 24"D



CONTEMPORARY CEDAR PLANK PLANTER
THE FORM, ORIGINALLY MADE FROM CEDAR PLANKS, WAS CAST TO CREATE THIS GENEROUS PLANTER LARGE ENOUGH TO ACCOMMODATE TREES.

ITEM# 543 30"H X 30"W [TOP] / 28"W [BASE]



VINTAGE WASHTUB

RESTORING THE CENTURIES-OLD TRADITION OF THE WASHTUB, THIS RESIN REPRODUCTION IS GUARANTEED NOT TO RUST OR DISINTEGRATE FROM THE BOTTOM UP.

ITEM# 565 20.5"H X 18.5"W



GALVANIZED POT

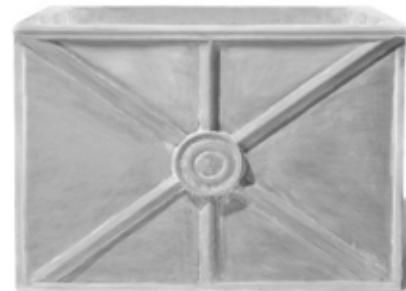
A HEAVY-DUTY GALVANIZED POT HAS BEEN CAST TO BE USED AS A PLANTER FOR YEARS TO COME. [HANDLES NOT WEIGHT BEARING.]

ITEM# 527 21.5"H X 22"W [26"W WITH HANDLES]

THE PARK AVENUE WINDOW BOX AND RECTANGULAR PLANTER

THIS PLANTER, CENTER PLACEMENT BELOW, WAS DESIGNED TO WORK WELL IN FRONT OF PARAPET WALLS, CREATING BEAUTIFUL LINEAR GARDEN PLANTINGS ON ANY TERRACE OR BALCONY. CUSTOM SIZES AVAILABLE.

ITEM# 590	WINDOW BOX	14"H X 38"W X 16.75"D
ITEM# 591	RECTANGULAR	18"H X 60"W X 16.75"D
ITEM# 591B	RECTANGULAR	16"H X 68"W X 16"D



FRENCH VINTAGE PLANTERS

INFLUENCED AND MADE FROM FRENCH VINTAGE GALVANIZED STEEL PLANTERS, THIS SERIES CAN BE USED SIDE-BY-SIDE ON TERRACE WALLS OR AS A STAND-ALONE CENTERPIECE.

ITEM# 628S	SQUARE [ART ON ONLY ONE SIDE]	22"H X 22"W X 18"D
ITEM# 628M	SQUARE [ART ON ALL FOUR SIDES]	22"H X 22"W X 22"D
ITEM# 628R	RECTANGULAR [ART ON ONLY ONE SIDE]	22"H X 28"W X 18"D



FLUTED ROUND PLANTER ▼
 THIS POT IS PERFECTLY SIZED FOR BOXWOOD MOUNDS, TREES OR FLOWERS,
 OR CAN BE CONVERTED INTO AN OUTDOOR WATER FOUNTAIN [UPON REQUEST].
 ITEM# 615 19"H X 34.5"W

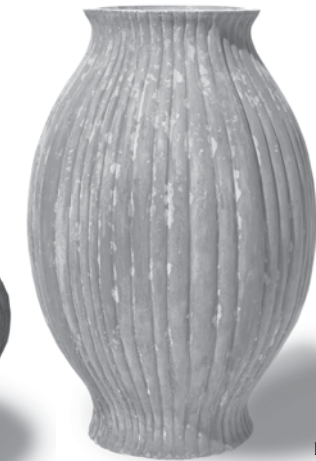


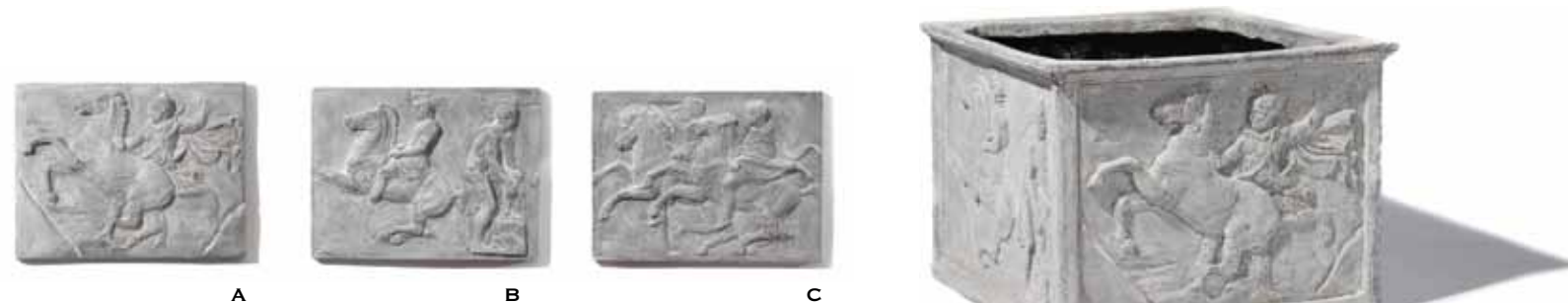
▲ MORTIMER PLANTER
 A HARD-TO-FIND PLANTER THAT HAS BEEN CAST AND PLANTED [AT LEFT] TO
 ILLUSTRATE THE PERFECT POT-TO-PLANT RATIO. MORTIMER GARDENS, LLC,
 INSTALLED THIS EGG AND DART PLANTER IN A DISTINGUISHED PIPING ROCK
 GARDEN.
 ITEM# 574 20"H X 15"W [SOIL DEPTH 16"]

FLUTED SQUARE PLANTER
 NOSTALGIA COMES ALIVE WITH THIS
 PLANTER THAT PROVES OLD IS NEW AGAIN.
 ITEM# 579S SMALL 11.5"H X 12"W X 12"D
 ITEM# 579L LARGE 16"H X 16"W X 16"D



PETAL GARDEN PLANTER NEW
 CAST FROM 20TH CENTURY FRENCH PLANTERS.
 BOTH FUNCTIONAL AND FABULOUS.
 A ITEM# 689S 20"H X 20"W
 [11"W TOP OPENING / 9"W BASE] NEW
 B ITEM# 689 29"H X 11.25"W
 [12"W TOP OPENING / 11"W BASE]





A

B

C

PARTHENON PLAQUE CONTAINER

AT THE END OF THE 19TH CENTURY, THE PRACTICE OF TAKING IMPRESSIONS OF THE PARTHENON WAS BANNED. THESE FRIEZE IMPRESSIONS, TAKEN BEFORE THAT TIME, ARE ILLUSTRATED ON EACH SIDE OF THIS BEAUTIFUL CONTAINER.

ITEM# 007

20"H X 26"W X 26"D

PARTHENON PLAQUES

INDIVIDUAL PLAQUES MAKE DECORATIVE ACCENTS TO GARDEN WALLS, SWIMMING POOL INTERIOR WALLS, OR ON ANY INTERIOR AND/OR EXTERIOR SURFACE.

A	ITEM# 057	HORSE REARING PLAQUE	17"H X 22"W X 1"D
B	ITEM# 056	HORSEMAN AND TROJAN PLAQUE	17"H X 22"W X 1"D
C	ITEM# 058	TWO HORSEMEN PLAQUE	17"H X 22"W X 1"D
D	ITEM# 057XXL	HORSE REARING PLAQUE, XX-LARGE	42"H X 55"W X 2"D



PARTHENON PLAQUE CONTAINERS AS FEATURED AT CRANE ESTATE, IPSWICH, MA,
WITH WHISKEY BARREL [SEE PAGE 65]

FRENCH FAUX BOIS PLANTERS

FAUX BOIS, MEANING FALSE WOOD IN FRENCH, BRINGS THE ORGANIC SENSE OF THE WOODS INTO YOUR HOME WITH THESE TWO TREE STUMP STYLED SQUARE AND ROUND PLANTERS THAT HAVE BEEN CAST FROM OLD CONCRETE ORIGINALS. ENJOY THE MODERN EVOLUTION OF OUR CASTING.

- ITEM# 663 ROUND 10.5”H X 15”W
- ITEM# 664 SQUARE 9”H X 11.5”W [10.5”W AT BASE]



TREE HOLLOW PLANTER

THE ORIGINAL TREE STUMP HOLLOW WAS USED INDOORS TO STORE ORANGES FOR JUICING. THIS REPLICA MAKES A FABULOUS PLANTER CAST FROM NATURE.
ITEM# 570 14”H X 14”W [10” AT BASE]



WOOLEN MILL BARREL

MADE FROM AN ORIGINAL WOOLEN MILL BARREL, THIS CASTING PROVIDES A CONTAINER SHAPE TO COMPLEMENT A NATURALISTIC GARDEN.
ITEM# 506 25.5”H X 21.5”W



WHISKEY BARREL

CAST FROM AN AUTHENTIC WHITE OAK KENTUCKY BOURBON BARREL, THIS PLANTER IS ONE THAT WILL BE TREASURED AS A PART OF YOUR GARDEN FOR YEARS TO COME, AND IS GUARANTEED NOT TO ROT.
ITEM# 517 18”H X 24.5”W





ART DECO PLANTER

CAST FROM AN ENGLISH CHISELED STONE ORIGINAL, THIS PLANTER STYLE IS REFLECTIVE OF OF THE ARTS AND CRAFTS MOVEMENT OF THE LATE 19TH CENTURY.

ITEM# 563 17"H X 18.5"W X 18.5"D



ENGLISH COTSWOLDS PLANTER

THE COTSWOLDS AREA, SOUTH OF CENTRAL ENGLAND, IS WHERE THIS BEAUTIFUL CIRCA 1920 STONE ORIGINAL WAS SOURCED. THE CARVINGS ARE REMINISCENT OF THE MEDIEVAL VILLAGES THAT LIVE ON IN THIS CENTURIES-OLD BUT NEWLY-CAST PLANTER.

ITEM# 658 15"H X 18"W



MACKENZIE PLANTER

AFTER RESTORING THE ORIGINAL OF THIS PLANTER, PENNOYER NEWMAN IS PROUD TO UNVEIL IT ANEW – PROVING THE POWER OF PRESERVATION.

ITEM# 576 20"H X 22"W



THE ROYAL CROWN PLANTER

THIS ROYAL CROWN PLANTER, CAST FROM A 19TH CENTURY FRENCH ZINC ORIGINAL, WAS UNVEILED AT THE WHITE HOUSE AND AT THE SUSAN G. KOMEN FOUNDATION HOLIDAY HOUSE NYC. ENJOY ITS SPECTACULAR BEAUTY IN YOUR HOME.

ITEM# 508 30"H X 28"W





PENNSYLVANIA RAM HEAD URN

MAKES A GORGEOUS STAND-ALONE PLANTER, OR CAN BE ALTERED BY INSTALLING COPPER TUBING INTO EACH OF THE FOUR RAM HEADS FOR USE AS A GARDEN FOUNTAIN.

ITEM# 611 18"H X 24"W



DIAMOND GARGOYLE PLANTER

CAST FROM AN OLD CONCRETE ORIGINAL, THIS PLANTER IS GENEROUSLY SIZED FOR DOOR ENTRANCE AREAS OR FOCAL POINTS IN ANY GARDEN.

ITEM# 473 27"H X 32"W



MORGAN LEAD POT

CAST FROM A J.P. MORGAN LEAD ORIGINAL. ALSO AVAILABLE AS A HALF POT WITH A FLAT BACK FOR WALL MOUNTING.

ITEM# 003 13"H X 15"W X 12"D

ITEM# 004 13"H X 15"W X 6"D [HALF]



TRUSCON SOLDIER POT

THIS DISTINCTIVE SWORD HEAD DESIGN HAS A WIDE OPENING MAKING IT AN ALL AROUND GOOD POT FOR PLANTS. EASY TO USE AND EASY TO MAINTAIN.

ITEM# 046 16.5"H X 27"W [12" ROUND BASE]



THE LADEW TOPIARY GARDENS CONTAINER

ORIGINALLY PURCHASED BY THE LATE HARVEY S. LADEW FOR HIS AMAZING TOPIARY GARDENS IN MONKTON, MARYLAND, THIS PLANTER HAS BEEN RESTORED AND RECAST TO PRESERVE ITS HORTICULTURAL LEGACY.

ITEM# 457 18"H X 24"W

VISIT LADEW TOPIARY GARDENS AT WWW.LADEWGARDENS.COM TO SEE WHAT THE GARDEN CLUB OF AMERICA VOTED THE "MOST OUTSTANDING TOPIARY GARDEN IN AMERICA."

LADEW
TOPIARY
GARDENS



POINTED LEAF PLANTER

FROM THE ESTATE OF WALTER MAYNARD, THIS ELEGANT POINTED LEAF PLANTER ORIGINAL WAS CARVED OUT OF LIMESTONE. PENNOYER NEWMAN RESTORED IT AND CAST IT TO MAKE THIS TIMELESS HEIRLOOM TO LAST FOR GENERATIONS TO COME.

ITEM# 567 15.5"H X 19.25"W



ROUND CUPID PLANTER

THIS PLANTER DEPICTS CUPID DANCERS AND MAKES A ROMANTIC ADDITION TO ANY INDOOR OR OUTDOOR SPACE.

ITEM# 006 12"H X 15"W



HEX CHERUB POT

THIS POT REFLECTS THE TIMELESS BEAUTY OF OLD WORLD DESIGN.

ITEM# 578 8"H X 16"W



CHERUB WINDOW BOX

THIS BEAUTIFUL CHERUB WINDOW BOX IS CAST FROM A LAGIN PROPERTY ORIGINAL. THE EXTRAORDINARILY HEAVY ANTIQUE TERRA COTTA ORIGINAL HAD CRACKED IN NEW YORK'S HARSH WINTERS AND WAS RESTORED AND RECAST TO BE ENJOYED IN THEIR GARDEN AND OTHER GARDENS TO COME.

ITEM# 626 12"H X 47"W X 14.5"D



GLADIATORS WINDOW BOX

GLADIATORS FOUGHT IN FRONT OF THE EMPEROR OF ROME FOR GENEROUS PRIZE MONEY. THIS WINDOW BOX BEAUTIFULLY DEPICTS THESE BRAVE WARRIORS.

ITEM# 035 10.5"H X 20"W X 11"D

THE GRAPEVINE BASKET PLANTER COLLECTION



THESE FOUR BEAUTIFULLY WOVEN GRAPEVINE BASKET REPLICAS ARE REINFORCED AND CAST ONE AT A TIME TO KEEP EACH WORK OF ART ALIVE FOR YEARS TO COME. RESIN IS IMPERVIOUS TO WATER, AND THEREFORE YOU WILL HAVE THE LOOK OF BEAUTIFUL GRAPEVINE BASKETS THAT ARE GUARANTEED NOT TO ROT.

- | | | |
|------------|----------------------------------|--------------------|
| ITEM# 673 | GRAPEVINE SQUARE | 24"H X 24"W X 24"D |
| ITEM# 674 | GRAPEVINE CYLINDER | 25.5"H X 19"W |
| ITEM# 675 | GRAPEVINE SQUARE FOR TABLETOP | 5"H X 12"W X 12"D |
| ITEM# 676H | GRAPEVINE WINDOW BOX W/ HANDLES | 10"H X 29"W X 22"D |
| ITEM# 676 | GRAPEVINE WINDOW BOX W/O HANDLES | 10"H X 24"W X 16"D |

GRAPEVINE TAPERED SQUARES

- | | | |
|------------|--------|--------------------------|
| ITEM# 690S | SMALL | 17"H X 14.5"W [BASE 13"] |
| ITEM# 690M | MEDIUM | 19"H X 18" W [16" BASE] |
| ITEM# 690L | LARGE | 19"H X 22"W [20"BASE] |



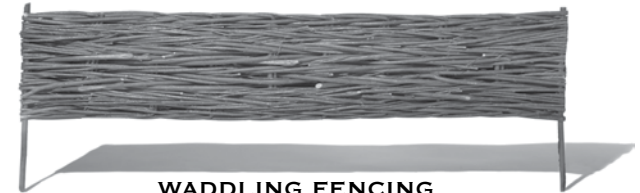
- | | |
|-----------|---|
| | GRAPEVINE OVAL W/ HANDLES |
| ITEM# 696 | 21.5"H X 26"W X 24"D
[25"H W/ HANDLES] |





GRAPEVINE ROUND BASKET
 THIS BASKET CAN ALSO BE CONVERTED INTO
 A HANGING BASKET.
 ITEM# 692 7”H X 18”W

MADOO GARDEN EDGE FENCING ▶
 ITEM# 518 18”H X 18”W X 1.5”DIA.
 [6” PUSHES INTO GROUND
 REVEALING 12” ABOVE GROUND.]



WADDLING FENCING
 WADDLING IS A HANDMADE LATTICE THAT REQUIRES THIN BRANCHES BE
 WOVEN IN BETWEEN UPRIGHT STAKES TO ENCLOSE TREES AND CREATE
 BORDERS IN GARDENS. NOW MADE IN RESIN TO LAST THE TEST OF TIME.
 AVAILABLE IN OUR NEW DARK BROWN RESIN COLOR AS WELL. [INCLUDES
 TWO 6” REBAR GROUND STAKES.]
 ITEM# 691 8”H X 39.5”W X .75”D

GRAPEVINE WALL BASKET
 CAST FROM AN OLD HAND-WOVEN GRAPE VINE BASKET, THIS PLANTER HAS A WIRE
 HOOK THAT CAN BE MOUNTED TO THE WALL FOR FLOWERS AND CASCADING VINES.
 [MOUNTING BRACKET NOT INCLUDED.]
 ITEM# 559 22”H X 25”W X 17”D [9”W AT BASE]



PORTUGUESE WATER BASKETS
 THE LATE DAVID BARRETT, A WELL-KNOWN INTERIOR DESIGNER, WAS THE FIRST
 TO CAST THESE INTRICATELY-WOVEN REED WATER BASKETS. MADE POPULAR IN
 PORTUGAL AND A HUGE PART OF THEIR FISHING HERITAGE, THESE BEAUTIFUL
 WORKS OF ART WITH THEIR INGENUOUS STYLING HAVE BEEN RECAST IN RESIN
 AND CAN BE PLANTED AND ENJOYED YEAR-ROUND FOR GENERATIONS TO COME.
 ITEM# 670S 14”H X 13”W ITEM# 670L 18”H X 15”W





ROUND CAP FINIAL
ITEM# 435 16"H X 12"W

PEDESTALS
A WONDERFUL WAY TO RAISE GARDEN URNS AND ORNAMENTS OFF THE GROUND FOR BETTER VIEWING AND PRESENTATION. AVAILABLE IN THREE STYLES; CUSTOM SIZES AVAILABLE UPON REQUEST. [SEE OUR WEBSITE FOR ADDITIONAL PEDESTAL STYLES.]

- | | | |
|------------|--|--|
| ITEM# 413S | CHELSEA PEDESTAL, SMALL | 14"H X 11"W X 11"D |
| ITEM# 413M | CHELSEA PEDESTAL, MEDIUM | 19.75"H X 15"W X 15"D |
| ITEM# 413L | CHELSEA PEDESTAL, LARGE | 28"H X 19"W X 19"D |
| ITEM# 414S | MODERN PEDESTAL, SMALL | 16"H X 11.5"W X 11.5"D |
| ITEM# 414M | MODERN PEDESTAL, MEDIUM [NO TOP MOLDING] | 28.5"H X 24"W X 24"D |
| ITEM# 414L | MODERN PEDESTAL, LARGE | 32.5"H X 24"W X 24"D |
| ITEM# 415 | LAUREL LEAF PEDESTAL | 21"H X 14.5"W [AT BASE] X 13"W [AT TOP] X 13"D |



- CLASSIC URN**
COMPLEMENTS ANY ARCHITECTURAL STYLE AND CAN BE USED ON STEPS LEADING INTO A TERRACE OR FLANKING THE FRONT DOOR.
- | | |
|------------|---------------------------|
| ITEM# 130S | 19"H X 15"W [7" BASE] |
| ITEM# 130 | 23"H X 15"W [7.5" BASE] |
| ITEM# 031 | 28"H X 23"W [11.75" BASE] |
| ITEM# 131 | 34"H X 28"W [14.75" BASE] |

ALPINE URN

THIS REPLICA IS AS BEAUTIFUL AS THE STONE CARVED ORIGINAL.
ITEM# 619S 25"H X 16"W [11" SQUARE BASE]
ITEM# 619L 33"H X 21"W [12" SQUARE BASE]



- HOURLASS URN/PLANTER**
CAST FROM A WOOD ORIGINAL, THIS URN HAS AN 8" PLANTING DEPTH.
ITEM# 417 18"H X 17.75"W

- FLUTED URN** ▶
A TRADITIONAL OLD WORLD SHAPE.
ITEM# 616 20.5"H X 13.5"W [11.5" SQUARE BASE]



**OBELISK**

CAST FROM AN EARLY 20TH
CENTURY ORIGINAL.

ITEM# 727 40"H X 10"W X 10"D

**RIBBED GARDEN URN**

ITEM# 701 18.5"H X 27"W
[12" BASE]

**BIRMINGHAM URN**

ITEM# 699 15"H X 18.75"W

**URN ON TAPERED PEDESTAL**

A CLASSIC URN MADE FROM A CAST
IRON ORIGINAL. [8" PLANTING
DEPTH.]
ITEM# 475 33"H X 22"W

**ROUND COLUMN PEDESTAL**

ITEM# 505 39"H X 16"W

**MODERN BOWL WITH URN BASE**

USE SEPARATELY OR JOIN TOGETHER WITH OUR TALL MODERN
PEDESTAL AS SHOWN. PEDESTAL AVAILABLE IN CUSTOM HEIGHTS.

ITEM# 649 MODERN BOWL 13"H X 27"W [15.25" SQUARE BASE]

ITEM# 681 MODERN PEDESTAL, TALL 48"H X 15.25"W X 15.25"D

**COMPOTE BOWL**

WITH NO DRAINAGE HOLE, THIS PLANTER CAN
EASILY BE A BIRDBATH OR CUSTOMIZED AND
CONVERTED INTO A FOUNTAIN.

ITEM# 553 12"H X 31"W [11"W BASE]

**MODERN URN**

THIS BEAUTY IS THE MOST SIMPLISTIC AND
MODERN SHAPED URN IN OUR LINE.

ITEM# 631 21.5"H X 18"W
[13" SQUARE BASE]





WALL HALL URN
 ITEM# 036 25"H X 19"W
 [14"W ROUND BASE]



ENGLISH GARLAND URN
 ITEM# 466 23"H X 20"W
 [9.25" BASE]



ROSE URN
 ITEM# 463 23"H X 17"W



BROADLEAF URN AND POT

THIS PLANTER AND URN ARE REMINISCENT OF ANCIENT ROMAN ART. A BEAUTIFUL DUET TOGETHER, THE COMPONENTS CAN ALSO BE USED AS SEPARATE PLANTERS. BASICALLY, ONE PLANTER THREE WAYS.

ITEM# 666	URN TOP & BASE	31"H X 22"W	[11" SQUARE BASE]
ITEM# 667	TOP ONLY	14"H X 22"W	[11" ROUND BASE]
ITEM# 668	BASE ONLY	17"H X 11"W	[11" SQUARE BASE]



LARGE CHELSEA URN
 SHOWN ON THE LARGE MODERN PEDESTAL, THIS GRAND SCALE URN HAS A SHALLOW BASIN DEPTH OF 8". ORDER WITH OR WITHOUT HANDLES.

ITEM# 453A	W/ HANDLES	34"H X 40"W
ITEM# 453B	W/OUT HANDLES	27"H X 30"W
ITEM# 414L	MODERN PEDESTAL, LARGE	32.5"H X 24"W X 24"D



▲ OLD WESTBURY WALLED GARDEN URN

THIS BEAUTIFUL URN WAS CAST FROM AN ORIGINAL LOCATED IN THE WALLED GARDEN OF OLD WESTBURY GARDENS, THE FORMER ESTATE OF THE JOHN SHAFFER PHIPPS FAMILY, HEIRS TO A U.S. STEEL FORTUNE. OUR REPRODUCTION HAS REPLACED THE CONCRETE ORIGINAL THAT DETERIORATED SINCE ITS FIRST INSTALLMENT IN THE GARDENS IN 1906.
ITEM# 561 21”H X 31.5”W [12” SQUARE BASE; SOIL DEPTH: 11”]

SQUAT URN ▼

ELEGANTLY APPOINTED, THIS URN IS BEAUTIFUL WHEN INSTALLED ON GARDEN PILLARS AND GATES. [SEE SMALL SQUAT URN ON PAGE 93.]

ITEM# 039 SMALL 8”H X 10”W [5” SQUARE BASE]

ITEM# 091 MEDIUM 16”H X 21.5”W [8.75” SQUARE BASE]



OLD WESTBURY GARDEN URN ▲

COPIED FROM A LEAD ORIGINAL AT OLD WESTBURY GARDENS, THE MAIN BODY DEPICTS AN ANTIQUITY SCENE AND THE LOWER PORTION HAS A LEAF MOTIF WITH A DECORATIVE CIRCULAR BASE. [11.25” ROUND BASE.]
ITEM# 511A WITH HANDLES 28”H X 25”W X 15”D
ITEM# 511B WITHOUT HANDLES 25”H X 15”W X 15”D



OLD WESTBURY WALLED GARDEN URN



SQUAT URN



OLD WESTBURY GARDEN URN



PETITE GARLAND
ITEM# 023 7"H X 10"W



PETITE FLORENTINE SQUARE
ITEM# 644 4"H X 4.5"W



EMBASSY ORCHID PLANTER
ITEM# 629 8"H X 9"W



CHERUB ORCHID PLANTER
ITEM# 641 9"H X 8"W



HEXAGON POT
A POT WITH CLASSIC CHARACTER. ASK ABOUT OUR UMBRELLA POLE OPTION.
ITEM# 019 5.75"H X 9"W



FRUIT POT
FLORAL AND FRUIT ELEMENTS SURROUND THE TOP OF THIS CLASSIC POT.
ITEM# 038S 11"H X 14"W
ITEM# 038M 18"H X 24"W



OLD WESTBURY II
THE ORIGINAL, LOCATED AT OLD WESTBURY GARDENS, HAS BEEN RECAST AND IS THE PERFECT HEIGHT FOR A DECORATIVE CENTERPIECE.
ITEM# 464 13"H X 14"W



CHERUB URN
THIS BEAUTIFUL URN HAS BEEN PRESERVED AND RECAST TO PROTECT IT FROM RUIN. THE DANCING GREEK GODDESS MOTIF IS REFLECTIVE OF 19TH CENTURY EUROPEAN DESIGN AND IS SURE TO MAKE AN ELEGANT STATEMENT INSIDE OR OUTSIDE YOUR HOME.
ITEM# 669 37"H X 19"W [15" SQUARE BASE]



FERN URN
A PAIR OF MATCHING URNS AT THE ENTRANCE OF A HOME OR THE START OF A GARDEN PATHWAY ADDS A DISTINCTIVE ACCENT.
ITEM# 033 35"H X 23"W [15.75" SQUARE BASE]

As seen at
THE WHITE HOUSE
WASHINGTON D.C.



**SPANISH PEDESTAL**

CARVED FROM A SPANISH ORIGINAL,
THE CARVINGS ON THIS PEDESTAL MAKE
IT A TREASURED GARDEN PIECE.

ITEM# 504 31"H X 14"W X 14"D

**ROUNDBUSH FINIAL II**

WITH BASKETWEAVE BASE
A WONDERFUL ACCENT PIECE THAT HAS
HISTORICAL PRECEDENCE AND POISE.

ITEM# 015B 28"H X 17"W

**ROUNDBUSH FINIAL**

THIS FINIAL IS CAST FROM A J.P. MORGAN
ENGLISH GARDEN LIMESTONE ORIGINAL. ONE
OF THE BEST YOU'LL FIND.

ITEM# 015 20"H X 15"W [11.5" BASE]

**ACANTHUS LEAF FINIAL**

INSTALL INTO STONE PILLARS OR USE
AS A STAND-ALONE GARDEN MARKER.

ITEM# 702 22"H X 7.5"W

**PINEAPPLE FINIAL**

THE PINEAPPLE HAS TRADITIONALLY BEEN
A SYMBOL OF WELCOME. USE IN YOUR
OWN GARDEN TO MAKE YOUR GUESTS FEEL
WELCOME.

ITEM# 582L 28"H X 19.5"W

**COE HALL TWO FIGURE FINIAL**

THIS CASTING OF AN EXTRAORDINARILY
DECORATIVE FINIAL IS A RARE
TREASURE THAT WILL GO ANYWHERE.

ITEM# 529 33.5"H X 27"W

ASSYRIAN BENCH

FOUR INDIVIDUAL COMPONENTS INGENUOUSLY ASSEMBLE TOGETHER TO MAKE THIS HIGH-QUALITY CASTING OF AN ANCIENT ASSYRIAN BAS-RELIEF FORM. THIS IS A BEAUTIFUL SEAT FOR TWO PEOPLE TO RETREAT TO IN ANY GARDEN.

ITEM# 512 31"H X 36"W X 19"D

**ASSYRIAN FRIEZE AND WINDOW BOX**

THIS HIGH-QUALITY CASTING OF AN ANCIENT ASSYRIAN BAS-RELIEF DEPICTS ASSYRIAN AND TURKISH CONQUESTS. THE FRIEZE AND WINDOW BOX MAKE BEAUTIFUL ADDITIONS TO GREENHOUSES AND GARDEN ROOMS.

ITEM# 514 FRIEZE 13"H X 36"W X 2"D

ITEM# 513 WINDOW BOX 9"H X 25"W X 10"D

**CHINESE JAR**

THE DRAGON, ONE OF THE MOST ANCIENT AND REVERED SYMBOLS IN ORIENTAL ART, IS REFLECTED IN THIS EXTRAORDINARY PLANTER.

ITEM# 544 15"H X 14.5"W

**SÃO PAULO PLANTER**

ARCHITECTURAL MOLDINGS FROM A PALACE IN SÃO PAULO WERE USED TO CREATE THIS SCALLOPED PLANTER.

ITEM# 081 13"H X 19"W X 19"D

**TIMPIDIOM FOUNTAIN TOP & VAUX-LE-VICOMTE FOUNTAIN BASE**

THE TWO ORIGINAL FRICK MARBLE FOUNTAIN PIECES WERE BROUGHT IN FROM THE CHATEAU THAT INSPIRED THE CONSTRUCTION OF VERSAILLES – THE VAUX-LE-VICOMTE. THIS REPLICA OF THE FOUNTAIN EXTENDS SPECTACULAR WORKS OF GARDEN ART FROM ONE GENERATION TO THE NEXT. [SPECIFY FOUNTAIN TOP WITH OR WITHOUT SPOUT]

ITEM# 078 FOUNTAIN TOP 22"H X 33"W X 4"D

ITEM# 079 FOUNTAIN BASE 16"H X 38"W X 20"D

ROMAN GODDESS PLAQUE

THIS BEAUTIFUL AND GENTLE LOOKING GODDESS PLAQUE WILL ADD AN ARTFUL EDGE TO A GARDEN ROOM OR WALL. HANG OR RECESS INTO AN IVY WALL, OR USE TO DECORATE A SPACE INSIDE OR OUT.

ITEM# 634 18"H X 33.75"W X 5"D



ARCHITECTURAL CAPITAL HEAD PLANTERS

ONCE THE CAPITAL HEAD TO A GREEK COLUMN, THIS REPLICA HAS BEEN CONVERTED TO A PLANTABLE OBJECT THAT WORKS EXTREMELY WELL ON STAIRWAYS, POSTS AND PILLARS.

ITEM# 630 8'H X 21'W



ARCHITECTURAL CAPITALS

THESE REPLICAS OF DECORATIVE CAPITALS CAN BE USED AS TABLE BASES OR SIDE TABLES IN THE GARDEN.

- ITEM# 416S SMALL 14"H X 17"W
- ITEM# 416M MEDIUM 18"H X 21"W
- ITEM# 416L LARGE 29"H X 28"W

GARGOYLE

CAST FROM A STONE ORIGINAL, THIS GARGOYLE CAN BE A DECORATIVE MOUNT, OR BE CUSTOMIZED INTO A SPOUT.

ITEM# 639 10"H X 27"W



PASTORAL TAPESTRY PLANTER

PASTORAL LANDSCAPES ARE DEPICTED IN THIS TAPESTRY-INSPIRED PLANTER.

ITEM# 623 9"H X 11"W



◀ **BIRD TAPESTRY PLANTER**
BIRDS AND PHEASANTS ARE DEPICTED IN THIS TAPESTRY-INSPIRED PLANTER.

ITEM# 624 9"H X 11"W



◀ **NEW YORK BOTANICAL PLANTER**

THIS CONTAINER HAS A DESIGN OF DECORATIVE PEACOCKS WITH MEDALLIONS AROUND THE PERIPHERY. THE ORIGINAL RESTS AT THE NEW YORK BOTANICAL GARDEN.

- ITEM# 001 14"H X 19"W
- ITEM# 621 13"H X 15.5"W

FLORAL BOWL

CAST FROM AN ANTIQUE STONE ORIGINAL, THE FLORAL MOTIF AND SIZE WORK BEAUTIFULLY ON STEP PLATFORMS OR ATOP COLUMNS AND TABLETOPS.

ITEM# 625 10"H X 22"W





GUGGENHEIM CURVED, STRAIGHT, AND S-SHAPED BENCHES

THESE UNIQUE BENCHES OF ITALIAN DESIGN WERE CAST FROM ORIGINALS AT THE GUGGENHEIM ESTATE IN PORT WASHINGTON, NEW YORK. SHOWN ARE THE CURVED AND STRAIGHT TOP BENCHES. ALSO AVAILABLE BUT NOT SHOWN IS THE S-SHAPED BENCH THAT ALLOWS TWO PEOPLE TO CONVERSE WHILE SITTING OPPOSITE EACH OTHER. ALL: 19"H X 16.5"D

ITEM# 054C CURVED TOP [54"L] ITEM# 054S STRAIGHT TOP [53"L] ITEM# 054SS S-SHAPED [57"L]



SQUAT URN

THIS URN HAS THE LOOK OF IRON AGE BRITISH POTTERY. [SEE MEDIUM ON PAGE 82.]

ITEM# 039 SMALL 8"H X 10"W
ITEM# 091 MEDIUM 16"H X 21.5"W

MORGAN LEAD POT

CAST FROM A J.P. MORGAN LEAD ORIGINAL. ALSO AVAILABLE AS A HALF POT FOR WALL MOUNTING.

ITEM# 003 13"H X 15"W X 12"D
ITEM# 004 13"H X 15"W X 6"D
[HALF POT]

THE NORTH WIND POT

A MYSTICAL FACE IS CAST INTO A DECORATIVE VINE MOTIF.

ITEM# 024 5"H X 9.5"W

FRICK GARDEN POT

CAST FROM A FRICK FAMILY ORIGINAL, THIS POT ILLUSTRATES A ROMAN SOLDIER PARADE.

ITEM# 005 9"H X 13"W

PETITE OVAL

WITH GARLAND SWAG, THIS POT IS THE PERFECT SIZE FOR GROWING HERBS AND BULBS.

ITEM# 047 4.5"H X 10"W



SCHWAB FAMILY HOSE HOLDERS

THESE PLANTERS WERE ENJOYED AT THE SCHWAB FAMILY ESTATE IN NEW JERSEY FOR MORE THAN 100 YEARS AND CAN NOW BE ENJOYED BY YOU. PLANT THIS BEAUTIFUL FORM AS IT IS OR USE IT TO SPIRAL YOUR GARDEN HOSE.

A	ITEM# 672S	SMALL	11"H X 17"W [13" OPENING; 9" BASE]
B	ITEM# 672M	MEDIUM	10"H X 22"W
C	ITEM# 672L	LARGE	20"H X 24"W [20" OPENING; 24" AT INTERIOR MIDLINE; 3.5" BASE]



OLIVE JAR

THIS PLANTER WAS CAST FROM A GERTRUDE JEKYLL ORIGINAL.

ITEM# 030 19"H X 21"W

RIDDER ROUND

A DESIGN THAT IS AS CONFIDENT, ARTFUL AND ELEGANT AS ITS OWNER. THE ORIGINAL, OWNED BY KATIE RIDDER PENNOYER, REFLECTS HER IMPECCABLE TASTE BOTH AS GARDENER AND INTERIOR DESIGNER.

ITEM# 573 12"H X 9"W

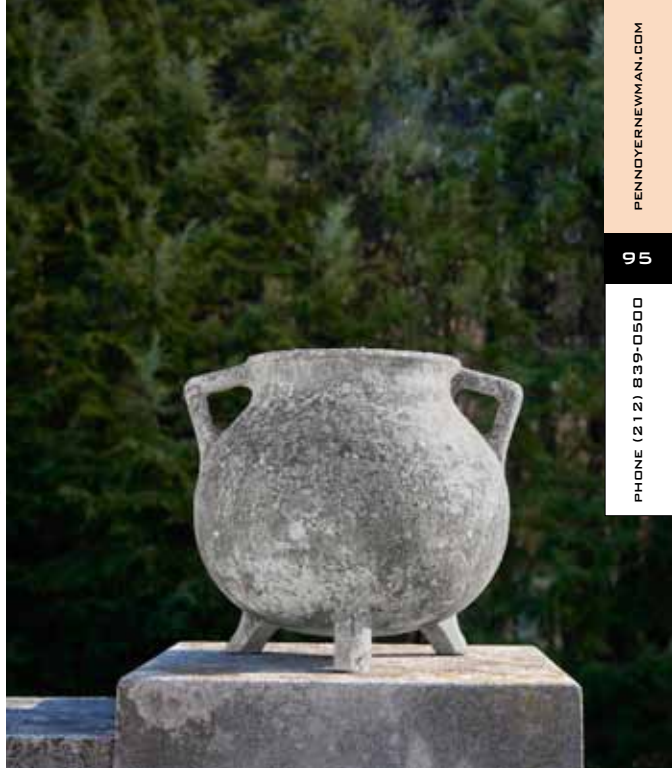
ITEM# 573L 24"H X 18"W



MID-CENTURY MODERN PLANTER

THIS FOOTED PLANTER HAS BEEN RECAST IN RESIN TO WITHSTAND EXTREME WEATHER CONDITIONS.

ITEM# 693 18"H X 21"W

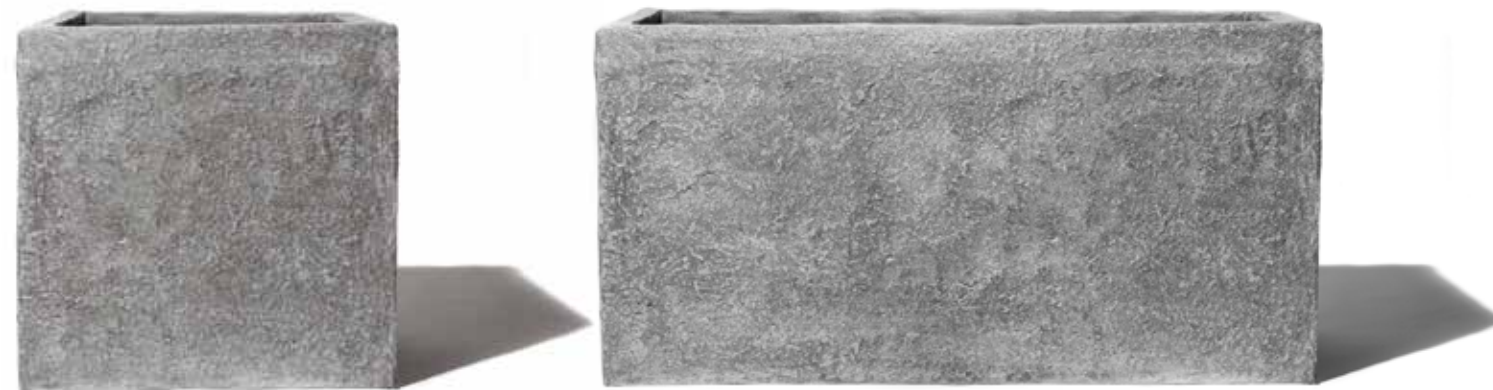




ALPINE GARDEN TROUGHS

ALPINE PLANTS – THE SMALL, SLOW-GROWING CULTIVARS NATIVE TO ROCKY SOIL – SIT COMFORTABLY INSIDE THESE NATURAL STONE-LIKE TROUGHS.

ITEM# 471S	SMALL	5”H X 26”W X 20”D
ITEM# 471M	MEDIUM	7.5”H X 26.5”W X 20”D
ITEM# 471L	LARGE	7”H X 33”W X 20”D
ITEM# 471XS	SQUARE TABLETOP [NOT SHOWN]	7”H X 10”W X 10”D
ITEM# 471RT	RECTANGULAR TABLETOP [NOT SHOWN]	7”H X 33”W X 10”D



ALPINE SQUARE PLANTER

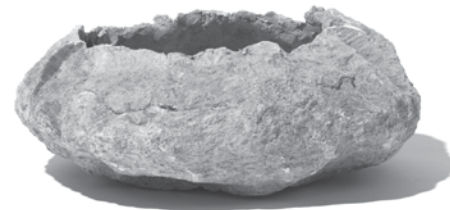
CAST TO COMPLETE OUR ASSORTMENT OF SHAPES WITHIN OUR POPULAR ALPINE PLANTER COLLECTION, THIS SQUARE ALPINE PLANTER WILL EASILY BECOME CENTRAL TO THE DESIGN AND STYLE OF YOUR GARDEN.

ITEM# 613 24”H X 24”W X 24”D

ALPINE TROUGH

BY RECREATING THE TEXTURE AND APPEARANCE OF GRANITE, THIS RUSTIC TROUGH IS THE INSPIRATION FOR A FARM-TO-TABLE ROOFTOP GARDEN. THIS STONE-LIKE STYLE PROVIDES A UNIQUE JUXTAPOSITION OF FORMAL WITH INFORMAL.

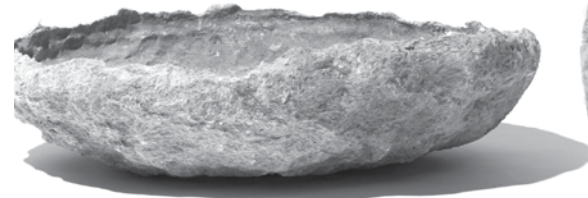
ITEM# 575 24”H X 48”W X 18”D



ALPINE BOWL I

THIS SHALLOW BASIN IS A PERFECT TABLETOP ACCESSORY FOR A SMALL PLANTING OF SUCCULENTS OR OTHER LOW GROWING CULTIVARS.

ITEM# 614S 6.5"H X 16"W



ALPINE BOWL II

THE STONE FINISH OF THIS SHALLOW BASIN MAKES AN INTRIGUING SCULPTURAL PIECE FOR INSIDE OR OUT AND CAN BE PAIRED WITH ALPINE BOWL I TO MAKE A PLEASING TABLETOP DISPLAY.

ITEM# 614L 5"H X 20"W



TWOMBLY CONTOURED TROUGH

VERMONT NATIVE, ARBORIST AND NURSERYMAN KEN TWOMBLY CARVED THIS ORIGINAL STONE AS A GIFT FOR HIS WIFE PRISCILLA AND PLACED IT INTO HER WORLD-CLASS ALPINE GARDEN. HERE IT IS IN ITS REPLICA FORM FOR YOU TO ALSO ENJOY.

ITEM# 471XL 12"H X 36"W
[PLANTING DEPTH: 8"]



PRIMITIVE POT AND ROCK POT **NEW**

CAST FROM CHISELED STONE ORIGINALS, THESE PRIMITIVE STYLE PLANTERS LOOK AS REAL AS THE ORIGINALS WITHOUT THE WEIGHT. MAKE AN IMPACT AND ENJOY THE ABILITY TO MOVE THEM AROUND YOUR GARDEN.

ITEM# 735

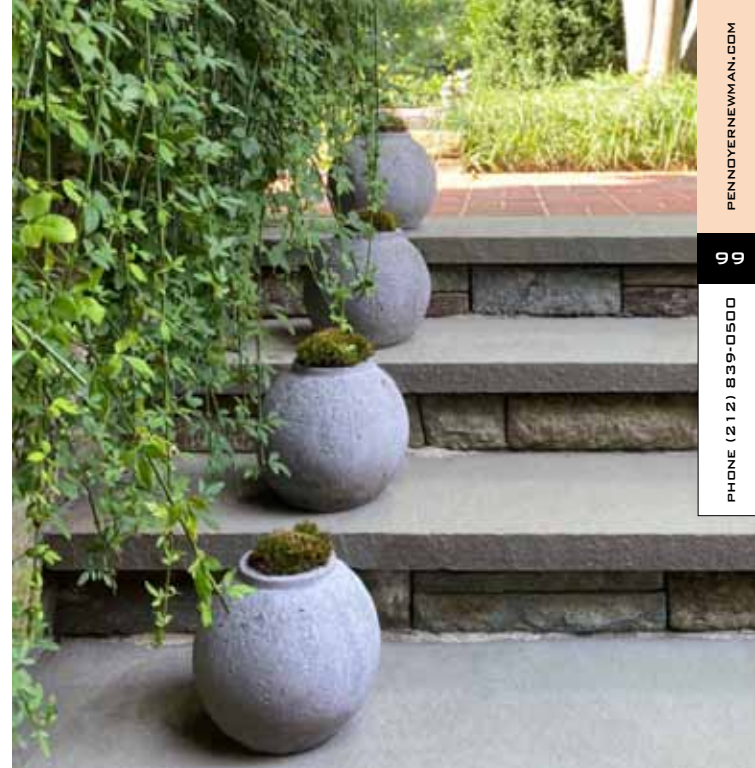
PRIMITIVE POT

24"H X 24"W **NEW**

ITEM# 732

ROCK POT

8"H X 9"W [3"W OPENING] **NEW**





EGG-SHAPED GARDEN STONE

CAST FROM ORIGINAL VOLCANIC STONES THAT WERE CHISELED INTO EGG FORMS, THESE SHAPES MAKE WONDERFUL GARDEN ORNAMENTS AND CAN FUNCTION AS DRIVEWAY MARKERS AND ALSO CONVERT INTO FOUNTAINS.

ITEM# 501 22"H X 16"W

STRAIGHT TOP BENCH

A NATURAL IN ANY GARDEN, THIS RESIN BENCH SO CLOSELY RESEMBLES ITS GRANITE ORIGINAL THAT YOUR FRIENDS WILL NEED TO LIFT IT TO BELIEVE IT. REFLECT ON THE GARDEN OF YOUR DREAMS WHILE SEATED ON THIS BENCH.

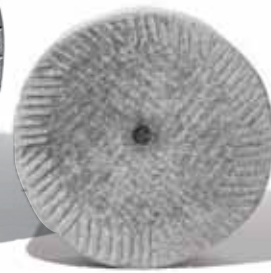
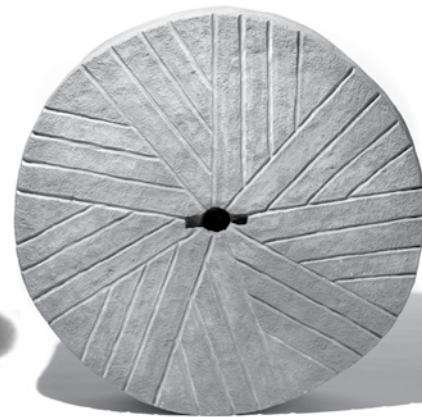
ITEM# 549 18"H X 48"W X 12"D



ENGLISH STADDLE STONE

ORIGINALLY USED AS SUPPORT BASES FOR GRANARIES IN ENGLAND TO LIFT GRAIN CRIBS UP AND ABOVE GROUND, THIS REPLICA WAS CAST FROM A CIRCA 1850 ORIGINAL. ENJOY THIS WHIMSICAL ORNAMENT IN YOUR GARDEN.

ITEM# 659 30"H X 18.5"W [TOP] X 16"W [BASE] X 18.5"D



MILLSTONES

WE'VE CAST TWO MILLSTONE GRINDING WHEELS FOR GARDEN WALLS, STEPS AND FOUNTAINS; USE WITH OUR ALPINE TROUGH TO CAPTURE WATER FROM A CUSTOM-INSTALLED SPOUT [AVAILABLE UPON REQUEST].

ITEM# 612S 22"H X 22"W X 3.5"D
ITEM# 612L 39"H X 39"W X 9.75"D



BUDDHA HEAD STATUE

A LUCKY LITTLE BUDDHA TO MAKE YOUR FLOWERS BLOOM.

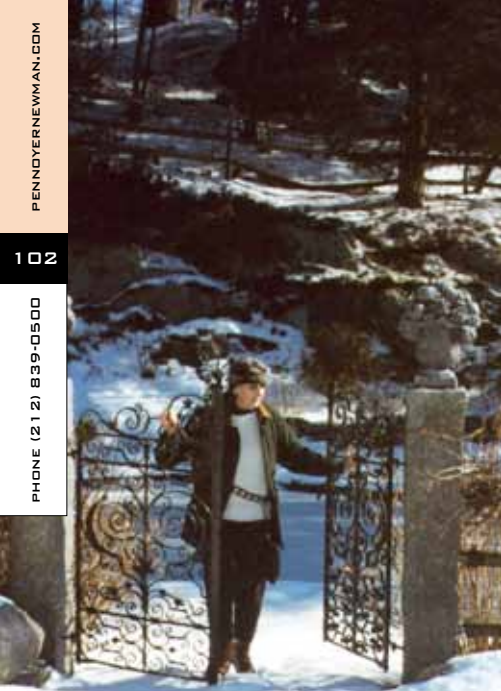
ITEM# 026 19"H X 12"W X 6"D



JAPANESE RAIN BARREL

CAST FROM AN EXTREMELY HEAVY, BEAUTIFULLY HAND-CARVED STONE ORIGINAL, THIS BARREL IS LARGE ENOUGH TO ACCOMMODATE SMALL TO MID-SIZE TREES.

ITEM# 502 24"H X 31"W



PILLAR & POST COLLECTION

POSTS

ORDER PLAIN OR DRILLED WITH HOLES FOR PIPE AND GATE INSERTIONS. CUSTOM SIZES AVAILABLE.

- ITEM# 546 44"H X 8"W X 8"D
- ITEM# 547 56"H X 8"W X 8"D



GARDEN EDGING STONES
RESIN EDGING STONES WITH HOLLOW INTERIORS TO ALLOW FOR EASY INSERTION INTO SOIL.

- ITEM# 530 SMALL
6"H X 24"W X 3.5"D
- ITEM# 531 MEDIUM
6"H X 33"W X 3.5"D
- ITEM# 532 LARGE
6"H X 42"W X 3.5"D

SPLIT RAIL FENCE POSTS ▶
ITEM# 503 81"H X 7"W X 7"D



OBELISK PILLAR
ITEM# 697 18"H X 9"W



GARDEN MARKER
ITEM# 528 38"H X 10"W X 10"D



NATURAL EDGE BENCH

TRUE TO THE SHAPE OF A NATURAL STONE'S EDGE, THIS STRAIGHT TOP RESIN GRANITE BENCH WILL BE ADMIRER IN YOUR GARDEN FOR YEARS TO COME. LIGHT WEIGHT AND SHIPS IN THREE PARTS. PVC PIPE INSERTIONS MAKE ASSEMBLY EASY UPON RECEIPT.
ITEM# 548 21"H X 48"W X 12"D



CURVED BENCH

KIDNEY BEAN SHAPED AND SUPPORTED WITH STONE-LOOKING LEGS, THIS RESIN BENCH IS SO WELL CRAFTED IT COULD DECEIVE THE MOST HARD-CORE COLLECTOR OF ALL-THINGS-GRANITE. SHIPS IN THREE PARTS. PVC PIPE INSERTIONS MAKE ASSEMBLY EASY UPON RECEIPT.
ITEM# 550 19"H X 51"W X 21"D



◀ ▲ **HORSE HEAD**
ITEM# 059 19"H X 4"W X 14"D



POWER'S DOG
ITEM# 803 9.75"H X 7.5"W X 7.5"D



ABATTOIR COW AND RAM BUSTS
ITEM# 050 COW 9"H X 9"W X 8"D
ITEM# 049 RAM 13"H X 13"W X 8"D



FRENCH COUNTRY ROOSTER
ITEM# 063 22"H X 12"W

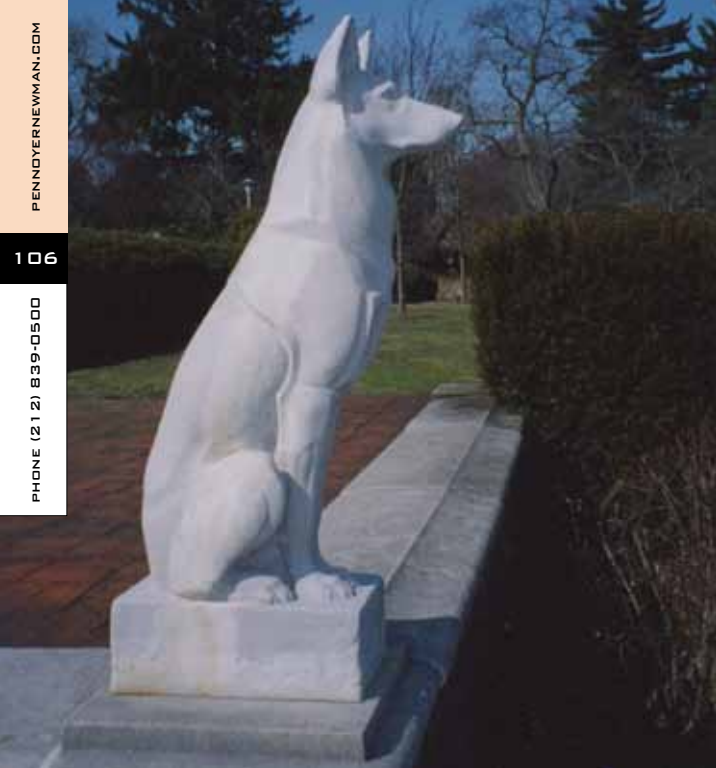


HORSE FACING LEFT & RIGHT
THE NOBILITY OF THE HORSE IN HISTORY CANNOT BE DISPUTED. CELEBRATE THE POWER AND GRACE OF THE EQUINE WITH THESE TIMELESS DESIGNS.
ITEM# 584R HORSE, RIGHT FACING 21"H X 33"W X 12"D
ITEM# 584L HORSE, LEFT FACING 21"H X 33"W X 12"D



WESTBURY LAMBS
AS SEEN AT THE GREY GARDEN AT OLD WESTBURY GARDENS, THE LEFT AND RIGHT FACING LAMBS ARE THE ICONIC GARDEN STATUARY THERE. NOW AVAILABLE FOR YOU TO ENJOY.
ITEM# 509R LAMB, RIGHT FACING 22"H X 20"W X 11"D
ITEM# 509L LAMB, LEFT FACING 22"H X 20"W X 11"D





◀ **THE EGYPTIAN HOUND**
A REPLICA OF AN ANCIENT EGYPTIAN PHARAOH HOUND
IS CAST FROM A HENRY CLAY FRICK FAMILY ORIGINAL.
ITEM# 061 42"H X 16"L X 9"W



▲ **THE WHIPPET STATUARY**
FAVORED BY THE NOBILITY OF ANCIENT TIMES, THIS WHIPPET STATUARY WAS
CAST IN HONOR OF ROBIN NORRIS' SON RUPERT, FELLOW GARDEN PLANTER
MANUFACTURER AND NURSERYMAN.
ITEM# 635 16"H X 20"W



ENGLISH HEDGEHOG STATUARY
ITEM# 636 7"H X 11"W



ENGLISH RABBIT
ITEM# 066 13.5"H X 16"W X 8"D



TEDDY BEAR DOORSTOP
ITEM# 470 14"H X 11"W X 7"D



FANCY HILLS FOX
THE OLD CONCRETE ORIGINALS TO THESE BEAUTIFUL
FOX REPLICAS WERE CREATED IN IRELAND, ENJOYED FOR
YEARS IN MARYLAND, AND RECENTLY REPAIRED AND CAST
FOR THE ENJOYMENT OF GENERATIONS TO COME.
ITEM# 526 FOX ON CHASE 12.5"H X 34"W X 5.5"D
ITEM# 535 FOX SITTING UP 18.5"H X 18"W X 8"D





TALL BLUE HERON
 OUR TALL BLUE HERON IS SO LIFE-LIKE,
 YOU'LL THINK IT JUST LANDED IN YOUR
 GARDEN.
 ITEM# 478 50"H X 36"W X 10"D [AT BASE]



PAUL'S HAWK
 NAMED FOR THE LATE PAUL PENNOYER, THIS
 HAWK IS A TRIBUTE TO HIS LOVE OF BIRDS.
 ITEM# 585 15"H X 6"W X 7.5"D



DOVES
 CAST FROM CONCRETE ORIGINALS, THESE
 DOVES MAKE GREAT GARDEN ACCENT PIECES.
 ITEM# 467 UPRIGHT 8"H X 9"W [4" BASE]
 ITEM# 468 EATING 5.25"H X 11"W [5" BASE]



GREAT BLUE HERON
 FAMOUS AMERICAN OIL PAINTER AND SCULPTOR F. EDWIN CHURCH
 [1876-1975] CREATED THE ORIGINAL OF THIS GREAT BLUE HERON. IDEAL
 FOR GARDENS, PONDS AND ENTRYWAYS, THIS WORK OF ART STANDS
 MAJESTICALLY ON A STURDY BASE.
 ITEM# 017 30"H X 8"W X 19"D





OTTER BIRD BATH

CAST FROM AN ORIGINAL BY SHAYNE HAYSOM, THE OTTER WAITS PATIENTLY FOR THE TURTLE'S SUBMERGENCE INTO THE BATH. ITS SURFACE, LIKE ALL OUR BIRDBATHS, PROVIDES GOOD TRACTION FOR THIRSTY BIRDS. THIS BIRDBATH BRINGS JOY TO GARDENERS OF ALL AGES.

ITEM# 018 10"H X 24"W



SEALS BIRD BATH

INSPIRED BY THE SHORELINES OF BOOTH BAY HARBOR, MAINE, THIS BIRDBATH WILL CREATE ITS OWN HARBOR IN YOUR BACKYARD.

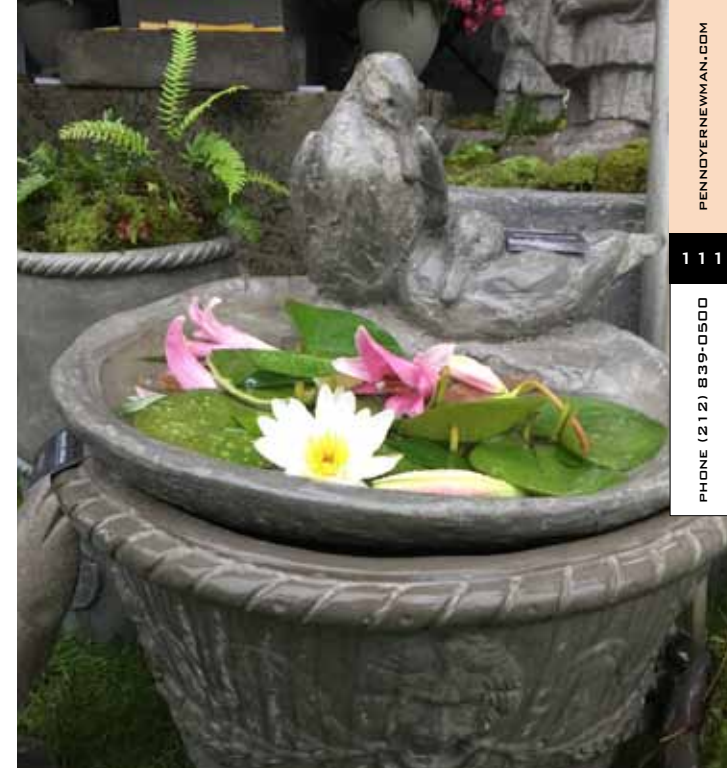
ITEM# 042 14"H X 22"W



TWO DUCKS BIRD BATH

THE ORIGINAL, SCULPTED BY SHAYNE HAYSOM, A LONGTIME FRIEND OF THE PENNOYER FAMILY, WAS CARVED OF WOOD. WE'VE CAST IT SO YOU CAN ENJOY THE PEACEFULNESS IN YOUR GARDEN.

ITEM# 043 15"H X 25"W





ROUNDBUSH FROG
THIS WONDERFUL FROG CAN BE CONVERTED INTO A SPOUT [SEE PHOTO AT LEFT], OR ENJOYED AS A DECORATIVE PIECE IN YOUR GARDEN. THE ORIGINAL WAS AT ROUNDBUSH, J.P. MORGAN'S FAMILY HOME IN LOCUST VALLEY, NEW YORK.

ITEM# 568 9.5"H X 12"W X 12"D



LINDSAY & LOULIE FROG AND DESK FROGS
ITEM# 586 7.5"H X 9.25"W X 9.75"D
ITEM# 587A DESK FROG A: 4.5"H X 4.75"W X 6"D
ITEM# 587B DESK FROG B: 5"H X 4.25"W X 4.75"D



ALLIGATOR BIRD BATH
THIS DISTINCTIVE CASTING WAS ORIGINALLY CARVED BY ARTISANS COMMISSIONED TO BUILD ST. JOHN'S CHURCH IN LATTINGTOWN, NEW YORK, THE CHURCH J.P. MORGAN BUILT FOR HIS DAUGHTER, FRANCES TRACY PENNOYER.

ITEM# 044 47"H X 28"W
ITEM# 044S HALF 32"H X 28"W



ROUNDBUSH TURTLE
THIS LOVELY TURTLE CAN BE ENJOYED AS IS, OR EQUIPPED TO SPOUT WATER FROM ITS MOUTH [SEE PHOTO AT RIGHT], OR HAVE A HOLE DRILLED IN ITS BACK TO ACCOMMODATE AN UMBRELLA POLE. SPECIFY UMBRELLA OR SPOUT OPTION.
ITEM# 045 8"H X 13"W X 16"L



GARDENER'S FRAME

ADD YOUR OWN MIRROR TO THIS FRAME
TO CREATE THE ILLUSION OF A LARGER
GARDEN SPACE.

ITEM# 469 30" ROUND X 2"D
INSIDE DIMENSION: 19"

**MORGAN RECTANGULAR FRAME**

THIS ORNATE PICTURE FRAME HAS A
TIMELESS AESTHETIC.

ITEM# 479 51"H X 39"W X 2.5"D

**MODERN FRAME**

THIS CLEAN-LINED FRAME IS PERFECT IN BOTH
CLASSIC AND CONTEMPORARY SETTINGS.

ITEM# 552 40.75"H X 26.5"W X 2"D

COLONIAL FRAME

THIS FRAME IS FROM AN 1800'S
COLONIAL FARMHOUSE IN ESSEX, MA.

ITEM# 480 52"H X 29"W X 2"D

PENNOYER NEWMAN LLC

DISTINCTIVE GARDEN POTS CAST FROM ESTATE ORIGINALS



Dear Friends,

With the beginning of 2021, we have so much to celebrate with the 93rd birthday year of our founder, Cecily Pennoyer. She brings to life the beauty of so many of the objects in our catalog, as well as the grandeur of our time-honored past.

This year's collection marks our continued commitment to expanding our collection of estate originals, while at the same time, offers an even more extensive range of modern, mid-century modern and primitive stone pots that work well in old and new settings alike. Many of our original planters, made of lead, are carefully cast from some of the foremost states in North America and abroad—and have been replicated from our company's founder's family, J.P. Morgan, as well as those of his dear friends and neighbors including Clay Frick, Daniel Guggenheim, John Shaffer Phipps, William Robertson Coe, and others whose planters have graced the lawns of their properties.

Combining history with craftsmanship is our top priority. As historic preservationists, our additional mission is to protect estate planters that would become extinct if we didn't work to protect and preserve the legacy of some of the oldest and most distinguished objects of past centuries.

Lightweight and weather resistant, all of our planters are made of pummeled marble and rock that are mixed with resin and are handcrafted one at a time in New York City.

We are so grateful to you, our customers, who make it all worthwhile.

Have a wonderful and happy year and be safe wherever you are.

Cecily Pennoyer & Virginia Newman Yocum



COLOR OPTIONS AVAILABLE:





TO ORDER PENNOYERNEWMAN.COM OR CALL 212/839-0500